

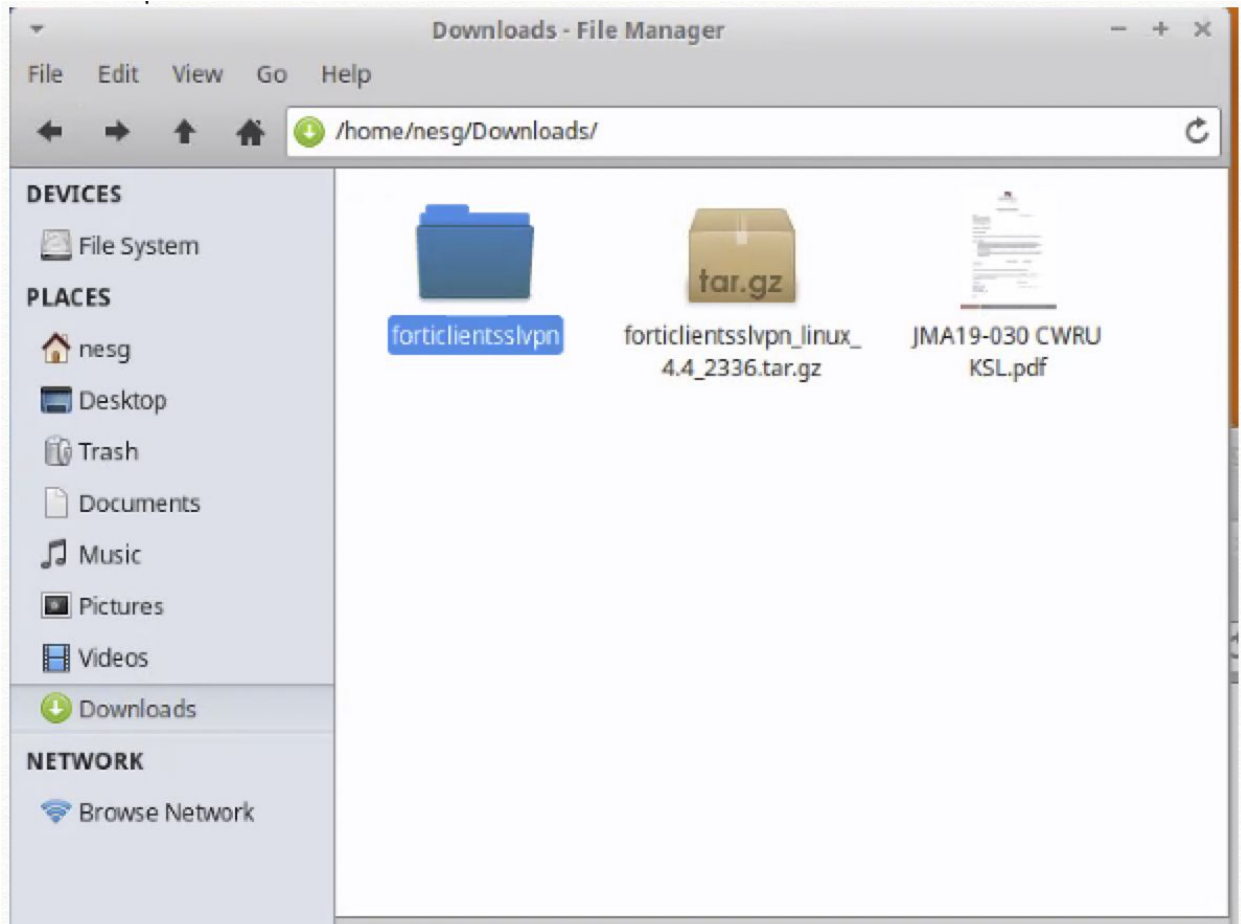
## Forticlient VPN Installation for Linux

Last Modified: Dec 3rd, 2019 by Kevin Chan

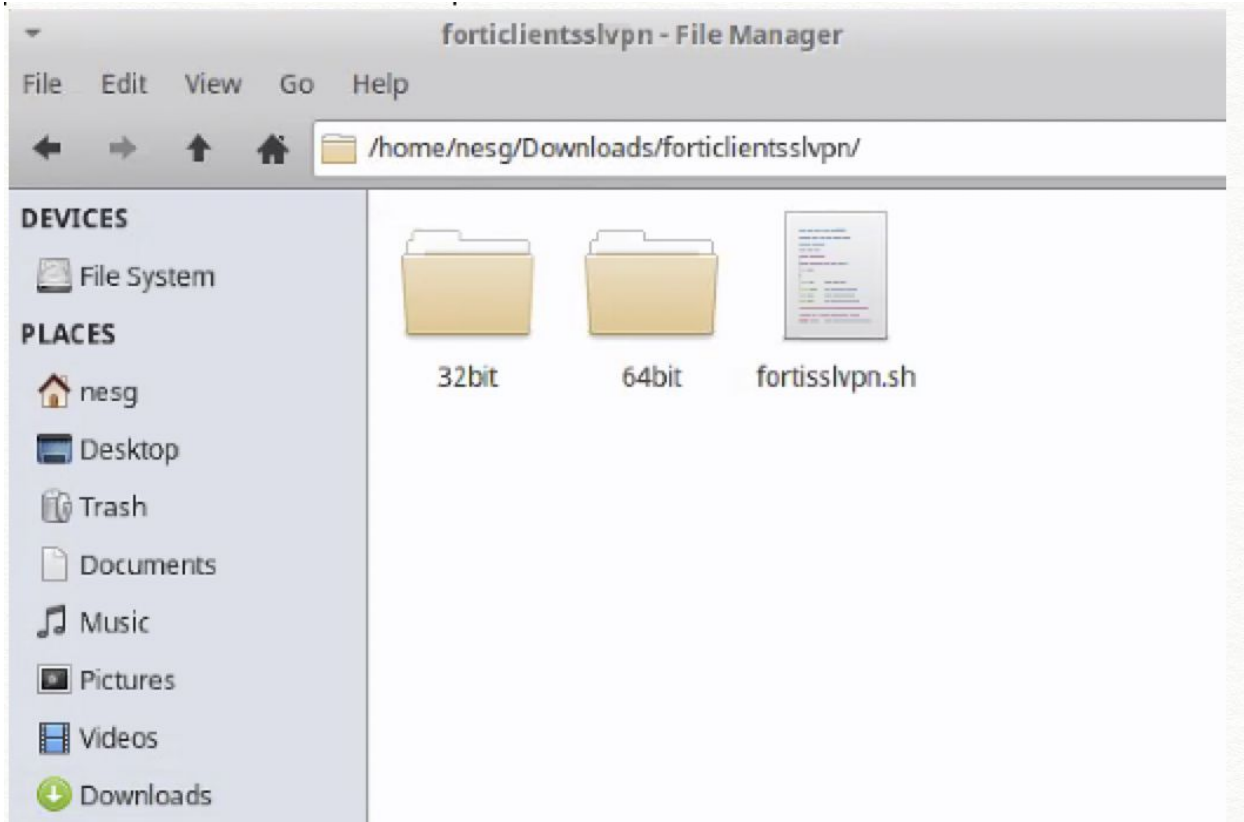
Assuming you have GUI control of the linux OS

### INSTALLATION and SETUP

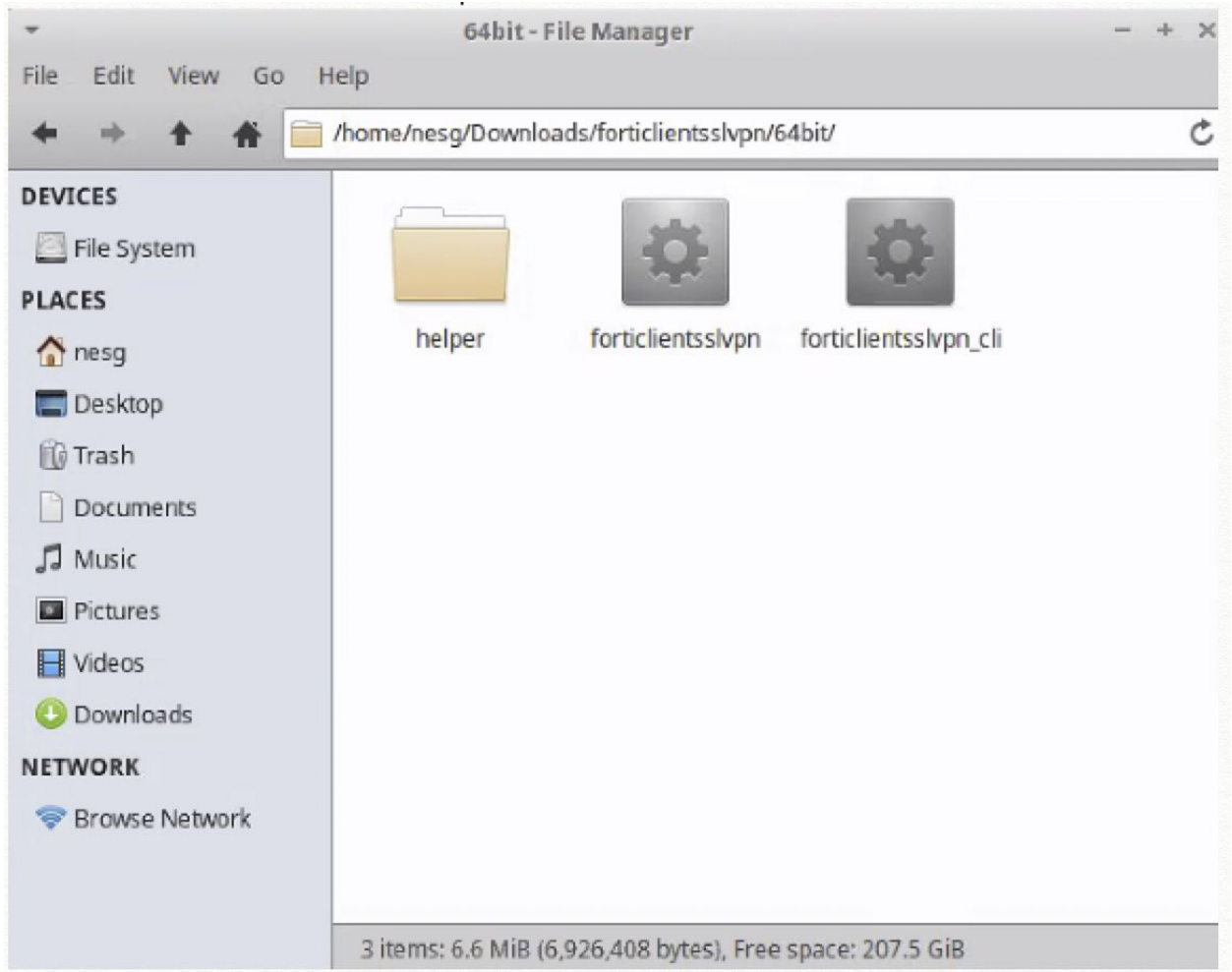
1. Download "forticlientsslvpn\_linux\_4.4\_2336.tar.gz" from <https://vpnsetup.case.edu>
2. At the download location, locate the folder named "forticlientsslvpn". (Note: You might need to decompress the downloaded forticlientsslvpn\_linux\_4.4\_2336.tar.gz file. Hint: You might want to move the 'forticlientsslvpn' folder out of the "Downloads folder and keep it somewhere safe.)



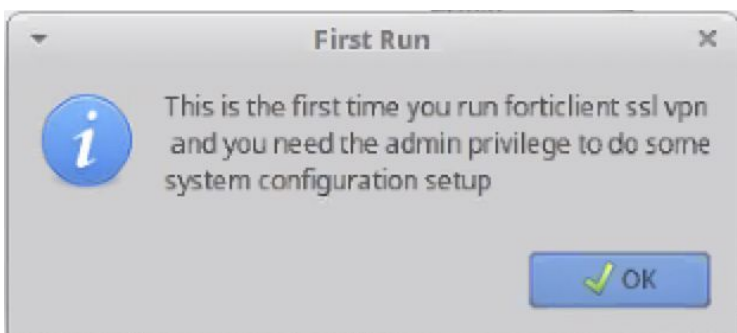
3. Open the folder named 'forticlientsslvpn'



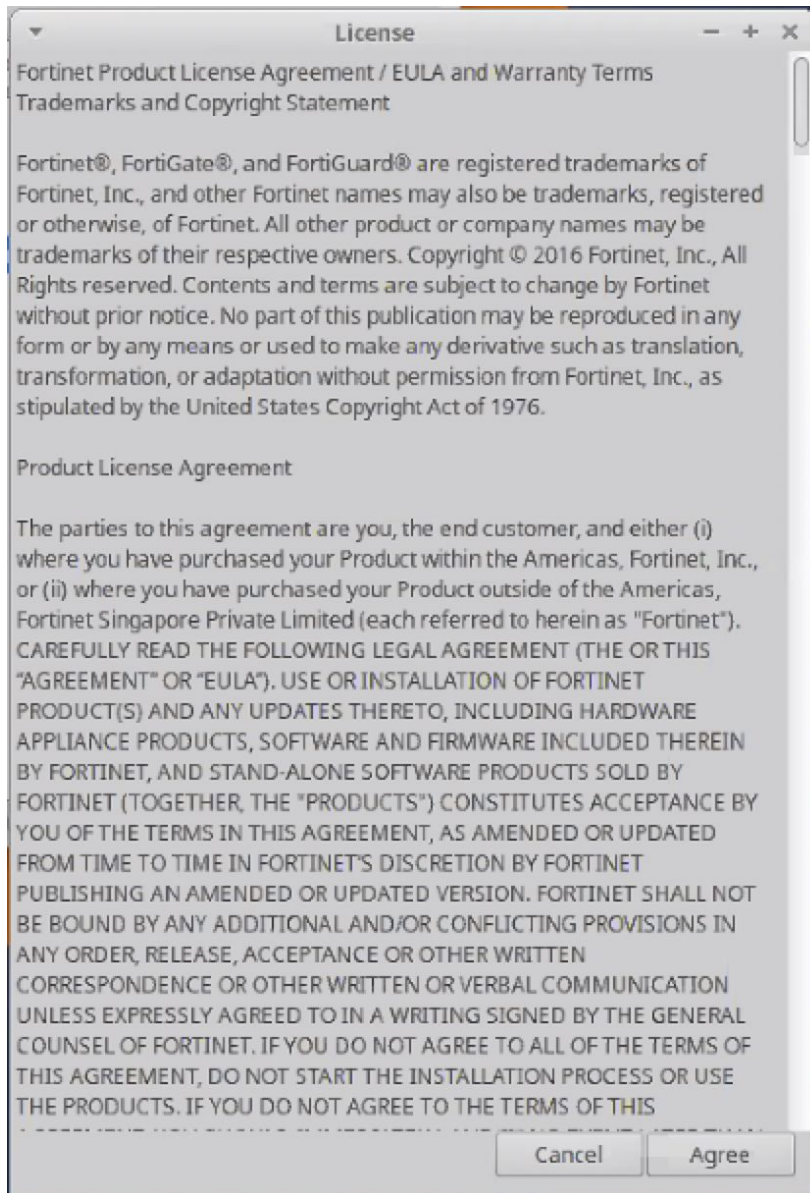
4. Determine if your system is 32bit or 64bit system, open either 32bit or 64bit folder (most modern system should use '64bit')
5. Double click on icon named 'forticlientsslvpn'



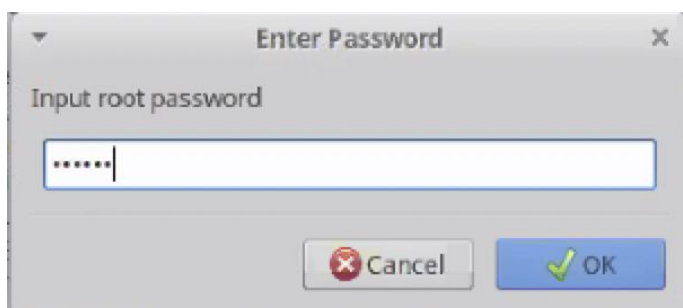
6. If you see a warning for running forticlient for the first time, click 'OK'



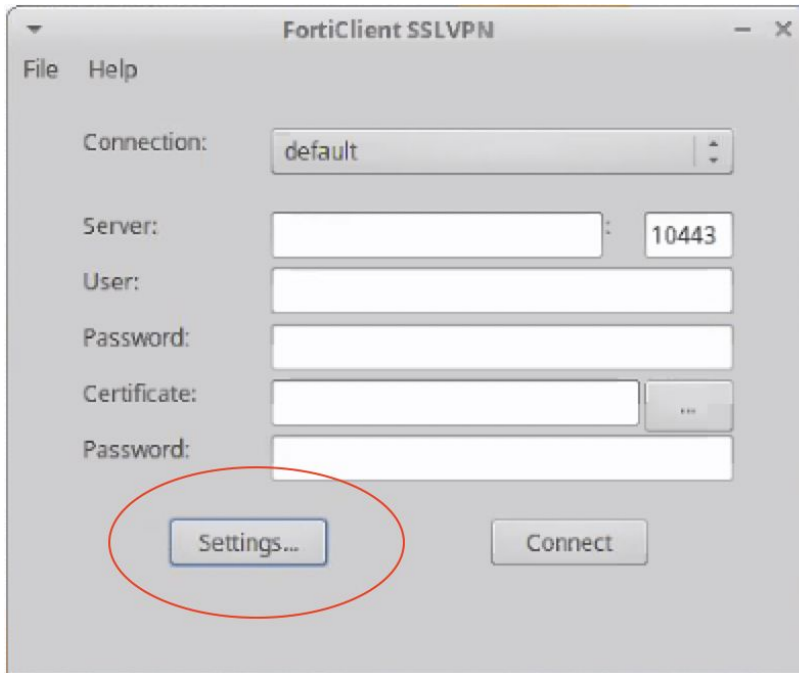
7. Click "Agree" to accept the EULA



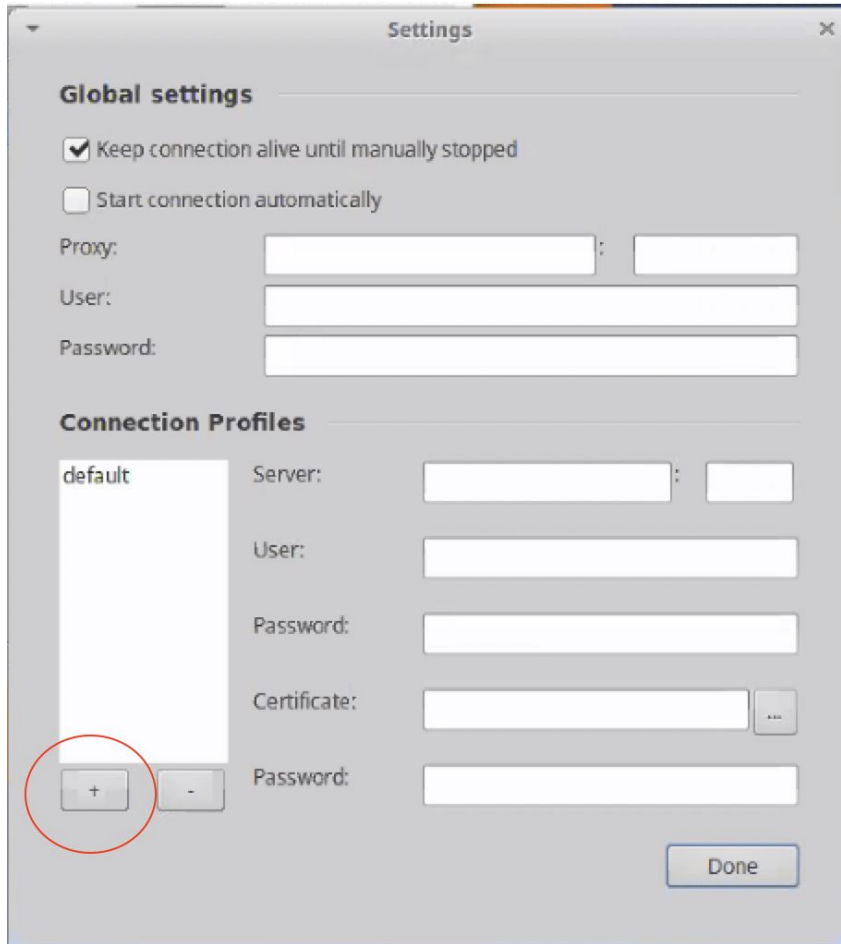
8. Enter 'your' password to finish the initiate setup, if asked.



9. Click 'Setting' to set up the VPN profile



10. Click '+' to add a new profile



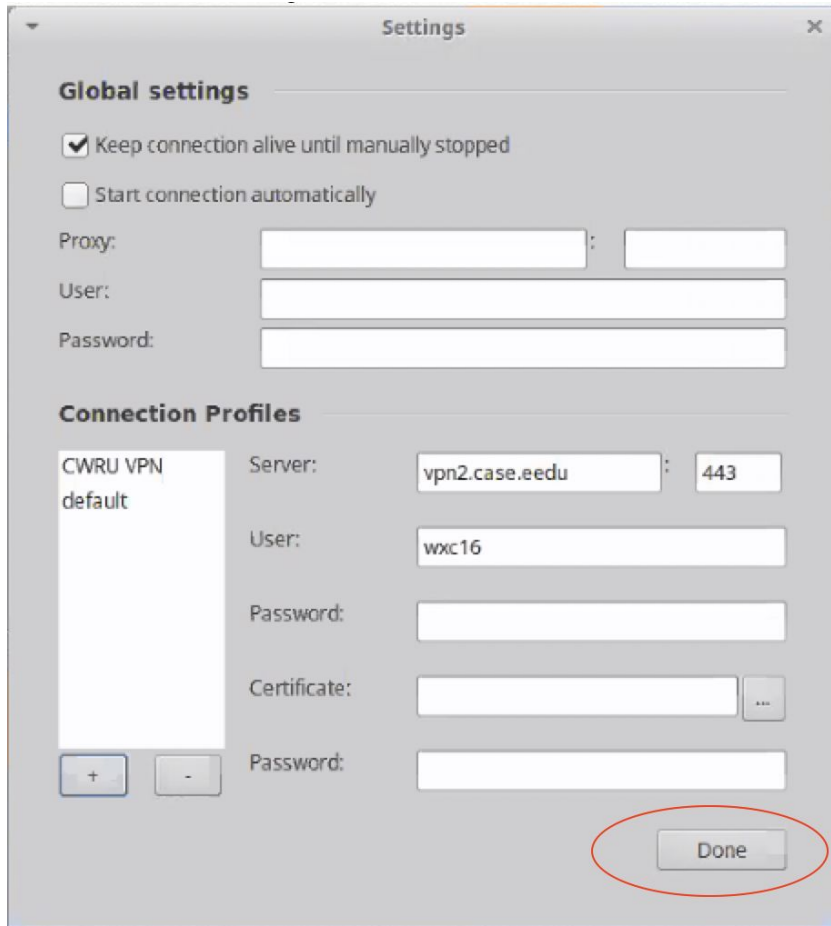
11. Fill in the info and click create

The image shows a 'New connection' dialog box with the following fields and values:

- Connection: CWRU VPN
- Server: vpn2.case.edu : 443
- User: abc123
- Password: (empty)
- Certificate: (empty) with a browse button (...)
- Password: (empty)

At the bottom of the dialog are two buttons: 'Cancel' and 'Create'.

12. Click 'Done' to leave the Setting window

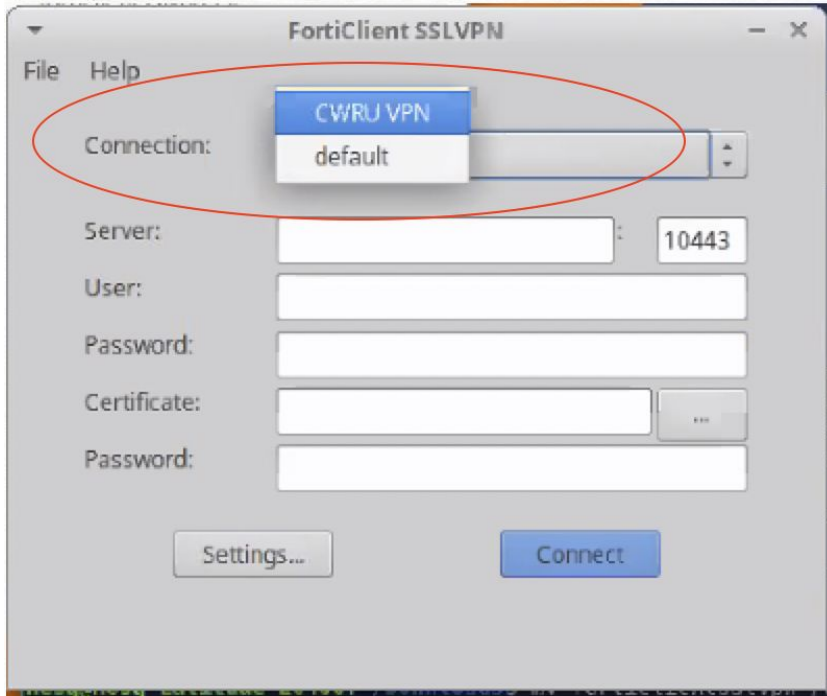


13. You have completed the initial set-up

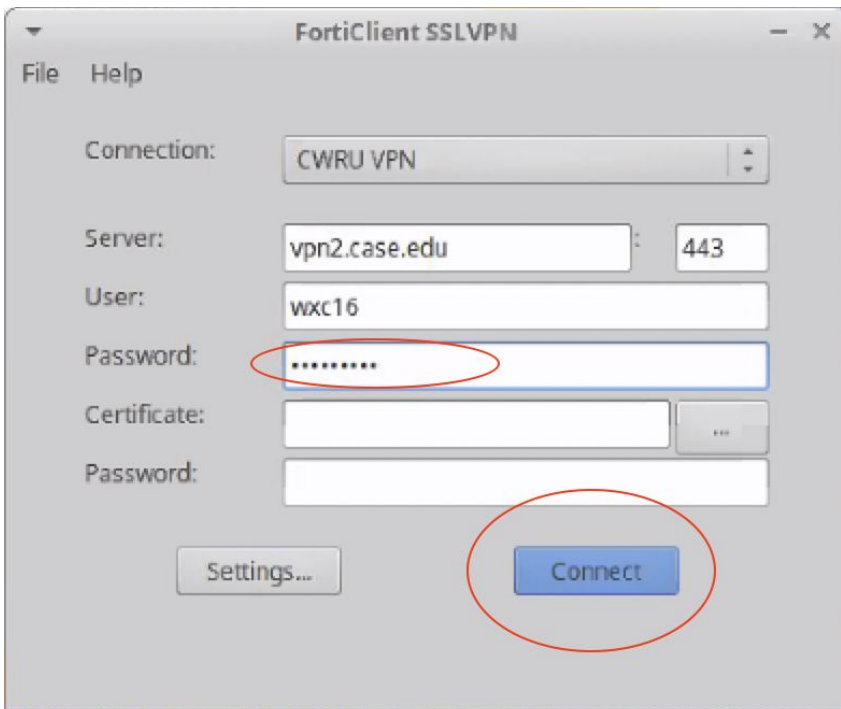
Establishing VPN Session:

1. Open FortiClient SSLVPN program
2. Open the pull down menu under 'Connection' and select 'CWRU VPN'

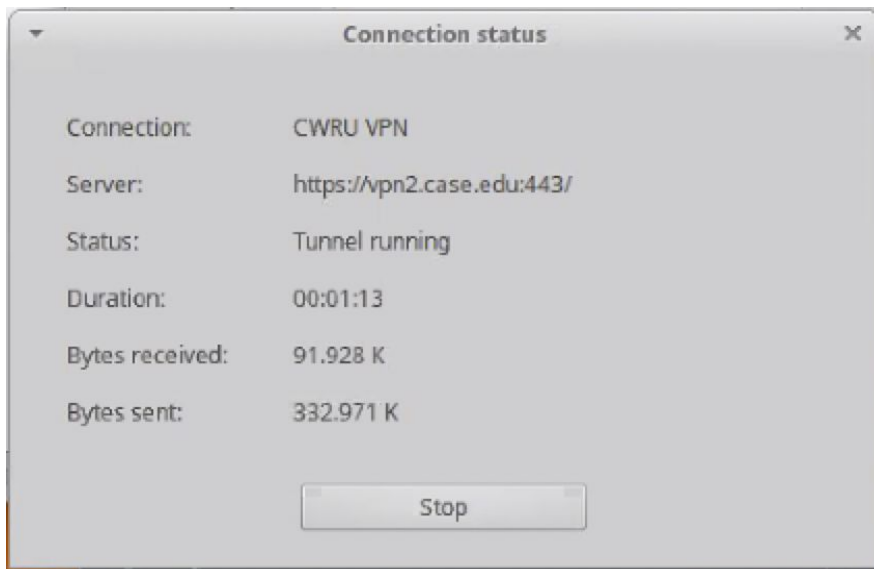




3. Fill in Username and Password field. (Note: By default, FortiClientVPN sends DUO PUSH Notification to your smart device with DUO Mobile APP installed.) If you choose to enter DUO Passcode or YUBIKEY code, enter your password in the password field followed by a ',' [comma], and then enter the passcode.  
( Leave "Certificate" and "Password" under "Certificate" blank.)



4. Respond to DUO PUSH notification, if needed
5. Wait for connection to be completed; Verify status is "Tunnel running"



#### Disconnect VPN Session

1. Open FortiClient SSLVPN program
2. To disconnect, click 'Stop'

