

First Year Student Newsletter

Volume 11.4

February/Early March 2007

Produced by
Julie L. Amon, Assistant Dean for First Year Students
and the Office of Undergraduate Studies

Greetings from the Dean

MAJOR DECLARATION

Greetings! It's time to talk about major declaration again. At this point, many of you have declared, many more have a major in mind but have not completed the declaration process, and finally a smaller number of you are unsure of your academic interests. Most students declare a major by the end of their first year. However, students still in the process of exploring academic options are not required to declare within this time frame. It is important to recognize that in order to have a successful and engaged first year experience, all first year students should work toward the clarification of academic interests.

YOUR MAJOR CAN BE CHANGED IF YOU CHANGE YOUR MIND LATER. If you change majors later on, that's fine -- many students do change (or add) majors as they discover new interests. It's also OK to change your mind later and "undeclare." **IF YOU'RE TRULY UNDECIDED**, continue to explore, to talk with your advisor and other faculty members, and to use the resources of the Career Center (Sears 206, 368-4446). I would also be happy to discuss your interests and this process. So long as you are actively engaged in exploring your interests and in making a decision, you can declare your major in the future. You should not be concerned about making a "wrong" decision about declaring a major. However, the best decision to make is an informed decision, so be intentional about talking to people, reviewing information, and understanding requirements before you make a decision. The advantage of declaring a major is the close and formal connection that is established between students and academic departments.

Those of you who have not declared yet, but are ready to do so should follow the steps listed below as soon as possible.

1. Obtain the Major Declaration Form* in the Office of Undergraduate Studies, Sears 357 (also available in the 24- Hour Study Room in Wade and in Fribley), and take the form to the department representative in your intended major for his/her signature and assignment of a major advisor. A list of representatives is in your *2006 – 2007 Handbook for Undergraduate Students*, and is posted outside of Sears 357.
2. All students must select which General Education/Core Requirements they are following. Your matriculation year must also be entered.
3. Students interested in Pre-Medicine/Pre-Dentistry and/or Pre-Law should be sure to mark the respective boxes on the declaration form.
4. Once completed, bring the yellow form to the Office of Undergraduate Studies, Sears 357. *The declaration of major is not official unless it is submitted to the Office of Undergraduate Studies.*

* A separate form must be completed for each major that you declare.

Experiential Learning Fellowship Application Deadline – March 9, 2007

Check out this College of Arts and Sciences funding opportunity to support undergraduate student projects (single or joint) in the humanities, arts, and social sciences for the purpose of providing opportunities for experiential learning to students seeking a major or minor in these disciplines. Five awards are usually disbursed annually with an average award totaling \$5000. Guidelines and application forms are available at <http://www.case.edu/artsci/forms/documents/ELFforSpring2007.doc> Please contact the College of Arts and Sciences at 368-3826 if you have any questions.

Who has made a difference
in your life at Case?

**Wittke Award for Excellence in Undergraduate Teaching &
Jackson Award for Excellence in Undergraduate Mentoring**
<http://studentaffairs.case.edu/awards/wittkejackson.html>

Do you have a favorite professor who deserves to be recognized for outstanding teaching? Has a faculty member or staff member mentored you during your time at Case? Nominations for the 2007 Wittke Award for Excellence in Undergraduate Teaching and the 2007 Jackson Award for Excellence in Undergraduate Mentoring are now being accepted. For information and to make an on-line nomination, go to <http://studentaffairs.case.edu/awards/wittkejackson.html>

Inside this Issue

- First Year Student Major Declaration
- Summer Research and Fellowship Opportunities
- Wittke & Jackson Award Nominations
- Spring SI Schedule
- Summer Course Information
- Orientation Leader Application Information
- 2007 – 2008 Room Selection
- Extended College Scholar Application Deadline
- Academic Standing & Scholarship Retention
- Course Repeat Option
- How to Withdraw from a Course
- Engineers Week
- Career & Major Exploration Information
- Faculty/Staff v. Student Basketball Game

FREE Help with Your Courses

ESS provides two high quality programs for FREE! If you need individual help, we have Peer Tutors available in over 70 courses. Schedule your appointments using the new TutorTrac on-line software program. The link and instructions are on the ESS website, <http://studentaffairs.case.edu/education/resources/tutoring/>.

The Supplemental Instruction (SI) program provides additional support in traditionally difficult courses. SI sessions allow you to practice problems with guidance, provide explanations of concepts in your language, and help you gain a deeper understanding of the material. SI Leaders are your peers who have done well previously in the course, so they give tips on how you can succeed. The SI schedule is available on the ESS web site, <http://studentaffairs.case.edu/education/resources/supplemental/schedule.html>.

Course	Day	Time	Location	SI Leader
BIOL 117	Sun.	4:00-5:30	Clark 308	Melanie Stipp
	Tues.	6:00-7:30	Clark 308	Melanie Stipp
BIOL 119	Sun.	3:30-5:00	Wade	Qilei Hang
	Wed.	6:30-8:00	Wade	Qilei Hang
BIOL 214	Sun.	4:00-5:30	Clark 302	Nicole Rich
	Mon.	5:00-6:30	DeGrace 312	Kaiser Imam
	Wed.	7:00-8:30	Clark 302	Nicole Rich
	Thurs.	5:00-6:30	Sears 480	Kaiser Imam
BIOL 216	Sun.	6:00-7:30	Fribley 210	Perry Evangelista
	Mon.	7:30-9:00	Wick 322	Jim Chen
	Tues.	11:30-1:00	Bing 103	Ramya Keshavaram
	Wed.	7:30-9:00	Wick 322	Jim Chen
	Thurs.	11:30-1:00	Bing 103	Ramya Keshavaram
CHEM 106	Fri.	12:30-2:00	Fribley 210	Perry Evangelista
	Mon.	6:30-8:30	MTHM 125	Tom Teets
	Tues.	4:30-6:00	Sears 462	Amelia Mehtar
	Wed.	8:30-10:00	Wade	Tom Teets
	Thurs.	8:30-10:00	Clark 302	Tom Teets
	Fri.	11:30-1:00	Sears 462	Amelia Mehtar
	Sat.	2:00-2:30	Wade	Amelia Mehtar
CHEM 224	Sun.	8:00-9:30	Nord 204	Phil Imbesi
	Mon.	5:00-7:00	Sears 354	Garima Sarda
	Wed.	6:30-8:00	Nord 204	Phil Imbesi
	Thurs.	4:00-6:00	Sears 356	Garima Sarda
CHEM 302	Sun.	2:00-3:30	Wade	Mark Sgambellone
	Thurs.	11:30-1:00	Clapp 108	Mark Sgambellone
ENGR 145	Sun.	12:30-2:00	Wade	Greg Minwell
	Sun.	5:00-7:00	S. S. Diner	Kati Dickey
	Thurs.	5:30-6:30	Wade	Kati Dickey
MATH 121	Thurs.	9:30-11:00	Wade	Greg Minwell
	Mon.	6:30-8:00	Wade	Greg
	Tues.	1:00-2:30	Yost 321A	Remington
	Wed.	10:30-11:30am	Yost 321A	Greg
MATH 122	Thurs.	11:30-1:00	Yost 321A	Greg
	Thurs.	8:00-9:30	Wade	Remington
	Fri.	12:30-1:45	Yost 321A	Greg
	Mon.	10:30-11:30am	Yost 321A	Matt
	Mon.	11:30-12:30	Yost 321A	Sebastian
	Mon.	12:30-2:00	Yost 321A	Beth
	Mon.	2:00-3:30	Yost 321A	Ari
	Mon.	3:00-4:00	Yost 321A	Beth
	Mon.	8:00-9:30pm	Wade	Beth, Charles, Matt, Sebastian
	Tues.	9:30-11:30am	Yost 321A	Sebastian
	Wed.	10:30-11:30am	Yost 321A	Matt
	Wed.	11:30-12:30	Yost 321A	Sebastian
Wed.	12:30-1:30	Yost 321A	Charles	
Wed.	1:45-3:00	Yost 321A	Ari	
Thurs.	7:00-8:30	Wade	Ari, Charles	
Fri.	10:30-11:30am	Yost 321A	Matt	
Fri.	11:30-12:30	Yost 321A	Sebastian	

Free Help with Your Courses Cont . . .

Course	Day	Time	Location	SI Leader	
MATH 126	Sun.	9-10:30pm	Wade	Brad	
	Mon.	10:45-12:15	Yost 321A	Ben	
	Mon.	2:00-3:00	Yost 321A	Brad	
	Mon.	4:00-5:00	Yost 321A	Chloe	
	Mon.	6:30-8:00	Wade	Ashley K, Ashley L, Ben, Brad	
	Tues.	9:30-11:15am	Yost 321A	Ashley K.	
	Wed.	2:00-3:00	Yost 321A	Ashley L.	
	Thurs.	6:30-8:00	Wade	Chloe	
	PHYS 116	Mon.	4:00-6:00	Nord 410	Sophia Hu
		Thurs.	4:30-6:00	Nord 410	Sophia Hu
PHYS 121	Sun.	7:30-9:00	Clark 308	Matt & Jeremy	
	Thurs.	7:30-9:00	Clark 308	Matt & Jeremy	
PHYS 122	Sun.	5:00-6:30	Wade	Ben Shank	
	Mon.	8:30-10:00	Clark 308	Ben Shank	
	Thurs.	8:00-9:30	Fribley 210	Kate Oldak	
	Fri.	12:30-2:00	Rock 306	Kate Oldak	
	PHYS 221	Tues.	12:00-1:00	Nord 212	Jen Kotzin
Tues.		6:30-7:30	Fribley 210	Jen Kotzin	
Thurs.		5:00-6:00	Nord 212	Jen Kotzin	



Summer School and the Off-Campus Study Request Process (Handbook p. 76)

Many of you have asked questions about taking summer classes at institutions other than Case. Can you do this? Yes. As with most processes at a university, there are policies, procedures and paperwork. Read the information in your *Handbook* and then if you are still interested, you can pick up the **Off-Campus Study Request Form** available in Sears 357, Wade and Fribley as well as on-line at <http://www.case.edu/provost/ugstudies/2006offcampus.pdf>. In order to complete the Off-Campus Study Request, you must collect course descriptions and faculty approval for the course(s) that you are interested in taking. The course(s) will be evaluated by Assistant Dean Claudia Anderson.

The deadline for submission of the request is **April 15, 2007**. Most universities and colleges begin to post summer schedules in February and March. You do need to wait to submit the form until you have actual course offerings to review. However, the sooner you complete the form, the sooner you will be notified if the course that you are interested in taking has been approved.

For those of you who live in Cuyahoga County, please pay special attention to the specific residency restrictions listed in the *Handbook*.

Don't forget that Case also offers summer courses and the tuition is 1/2 price for these courses. The summer website <http://www.case.edu/academics/summer> was updated with Summer 2007 information in December. The website will be updated continually. Courses for Summer 2007 include BIOL 214 and, for the first time, BIOL 215. Other new courses include Arabic 101 and 102, HBRW 202, COSI 260 - Multicultural Communication, ANTH 379 - Old Order Amish, ENGL/WLIT 368C - Asian Cinema, and study abroad trips to Spain and Italy. The usual array of courses will be offered, including PHYS 115/116; CHEM 105/106, and CHEM 223/224; 233/234 and many ENGR courses. For more information, students can email summer@case.edu.

Orientation Leader Information Session – February 17th
<http://studentaffairs.case.edu/programs/leadership/>

Thinking about applying to be an Orientation Leader? Attend the Case Winter Leadership Conference and sign up for an Orientation Info Session: <http://studentaffairs.case.edu/programs/leadership>

This session is a wonderful introduction of what to expect for Orientation 2007. Come find out how you can be directly involved in one of the most memorable college experiences for Case students. *This session is highly recommended if you are planning to apply for an Orientation Leader position.* Applications will be available mid-February. If you have any questions, contact Kate Police kate.police@case.edu or 216-368-8827.



2007 – 2008 Room Selection Process

An important part of the spring semester is selecting where you are going to be living next year. All second year students are required to live on campus, unless they are commuting from home. Right now, it is important for you to begin thinking about your living options for next year. They include:

- Clarke Tower
- Murray Hill Complex (SRV)
 - Alumni House
 - Howe House
- Carlton Road Complex
 - Glaser House
 - Kusch House
 - Michelson House
- Greek Housing
- Special Interest Housing – an opportunity for second year and/or upperclass students to live together around a common interest:
<http://studentaffairs.case.edu/living/housing/selection/specialinterest.html>

In addition, you also need to consider who you want to live with. So begin those conversations with your friends now!

For additional information regarding room selection, please visit:
<http://studentaffairs.case.edu/living/housing/selection/>

For details about the information sessions about room selection occurring please visit:
<http://studentaffairs.case.edu/living/housing/selection/infosession.html>

There will also be open houses to visit the above locations to help you plan where you want to live next year. Check here for detailed information:
<http://studentaffairs.case.edu/living/housing/selection/openhouse.html>

If you have any questions about the process, please contact your Residence Life staff or email Housing, Residence Life & Greek Life at housing@case.edu

**College Scholars Program (CSP) Application Deadline
 Extended to February 21, 2007**
<http://www.case.edu/artsci/scholars/>

The College Scholars Program (CSP) at Case is designed for a small group of outstanding undergraduates (approximately 20 are accepted each year) in the arts, humanities, sciences, engineering, nursing, mathematics and natural sciences, and the social sciences, who are interested in exploring how academic learning can address larger world concerns. The program emphasizes broad interdisciplinary learning and the moral demands of leadership - both on the Case campus and beyond - and promotes self-discovery and community building by students.

Students selected as College Scholars enroll together in the fall of their sophomore or junior year and move as a cohort through the program. To enhance their experience in the program, student have the option to live together in a common residence- a special suite with single rooms and a fully-equipped kitchen in the new Residential Village on the northside of the Case campus. Students admitted to the program who submit applications by the February 21st deadline will have preference for the College Scholars dorm suite in the Residential Village.

Each class year emphasizes a different set of experiences, including opportunities to develop communications and leadership skills, sessions with renowned leaders and experts, and the design, conduct, and presentation of a senior project that applies individual expertise to a social or significant issue important to the surrounding community. This two-year, twelve-credit-hour honors program is open to Case sophomores or juniors with a diversity of interests and perspectives. Applications <http://www.case.edu/artsci/scholars/Applicationcomingsoon.htm> are accepted once a year, at the beginning of the spring semester.

The College Scholars Program is administered through the Case College of Arts and Sciences. For more information, please contact Linda Ehrlich, program co-director, at linda.ehrlich@case.edu.

SOURCE NEWS
(Support of Undergraduate Research & Creative Endeavors)
<http://www.case.edu/provost/source/>

The SOURCE office has moved to Sears 451. Come and see the new space! Make sure to check out the SOURCE website for information on summer research opportunities both on-campus <http://www.case.edu/provost/source/opp/oncampus.htm> and off-campus <http://www.case.edu/provost/source/opp/offcampus.htm> as well as funding opportunities (<http://www.case.edu/provost/source/opp/funding.htm> and <http://www.case.edu/provost/source/opp/SOURCEFundingHints.pdf>). Mark your calendars for the **2007 Intersections: SOURCE Undergraduate Symposium and Poster Session on Friday, April 20 from 10:00 a.m. – 3:00 p.m.** If you would like to participate in this opportunity, check out the details on the website <http://www.case.edu/provost/source/symposium/index.htm> and **submit your proposal by March 19, 2007.**

Present a SatCo Program this semester!

Looking for resume builders? Present a workshop, host an event, or plan a forum for Spring SatCo on Saturday, April 14 or Sunday, April 15. **Program proposals are due by March 1.** For more information visit <http://studentaffairs.case.edu/programs/satco/>



**Course Repeat Option
(Handbook pp. 79 – 80)**

If you are not pleased with a grade that you earned last semester, you have the opportunity to take the course over again and have the first grade that you earned removed from your cumulative GPA. In order to take advantage of this opportunity, you must complete the Course Repeat Option Form

<http://www.case.edu/provost/ugstudies/course%20repeat.doc> .

There are many requirements and stipulations that make up this policy and is it important that you are aware of them before making the decision to use this option. Please make sure to review the entire policy listed on the form and in the Handbook.

Upon application of the Course Repeat Option, the first grade will remain visible on the transcript, but will be removed from the calculation of the cumulative grade point average and the original semester in which the grade was earned. The second grade will then be used for calculation into the cumulative grade point average (and the semester in which it was earned), even if it is not the better grade. If the Course Repeat Option is applied, your transcript will show the comment "GRADE NOT COUNTED. COURSE REPEATED." directly below the course. If you wish to use the Course Repeat Option Policy, you must submit the Course Repeat Option Form by 5:00 p.m. on the last day of classes in the term in which the course is being repeated. Late Course Repeat Options forms will not be accepted. All grades earned at Case Western Reserve University, including those grades removed as a result of the application of the Course Repeat Option Policy, will be applied to the Scholarship GPA that is reviewed in order to determine Case Western Reserve University merit-based scholarship retention.

Course Repeat Option Forms are available at the main Office of Undergraduate Studies in Sears 357, at our R.U.S.S. offices in Wade and Fribley, and on-line at <http://www.case.edu/provost/ugstudies/course%20repeat.doc> .

**R.U.S.S.
Residential Undergraduate Studies Satellite**

Have a quick question; need to withdraw from a class; wondering about how to get connected to academic opportunities? Come visit the Deans from the Office of Undergraduate Studies at RUSS Offices in Wade and Fribley, Mondays – Wednesday from 6:00 – 8:00 p.m. RUSS is staffed by Dean Amon, Dean Anderson, Dean Hamel, Dean Pieri, and Dean Wolcowitz. Contact the main Office of Undergraduate Studies at 368-2928 or <http://www.case.edu/provost/ugstudies/walkinhours.htm> to check about weekly walk-in availability.



Spring Final Exams Schedules (Handbook p. 74)

By now you should have reviewed your spring final exam schedule. It is important that you consult your course syllabi and the on-line final exam schedule. Final exams dates *will not* be altered to accommodate travel plans. You can find the Final Exam Schedule on the Registrar's website at <http://www.case.edu/provost/registrar/exams/exam072.html> . Make sure you confirm your exam schedule and make your travel, work or school plans accordingly.

4/30	Last Day of Classes
5/1 – 5/2	Reading Days
5/3	Final Exams Begin
5/10	Final Exams End

NOTE: No student will be required to take more than two final examinations on a single day. A student who has three final examinations scheduled for a single day should go to the Office of Undergraduate Studies and obtain the assistance of the Dean in arranging to take one of those examinations on an alternative day during the final examination period. Similarly, a student with conflicting examinations should seek the assistance of the Dean of Undergraduate Studies in arranging to have the time of one examination changed. **Students must notify the Dean of the need for assistance by April 1, 2007.**

**Making Up Incompletes from the Fall Semester
(Handbook p. 78)**

If you received a grade of "I" (Incomplete) for the Fall Semester, it is your responsibility to meet with your professor and make arrangements to complete the unfinished work as soon as possible. All incomplete work must be completed and a grade change submitted to the Office of Undergraduate Studies **no later than March 30, 2007.** Any "I" not made up by this date will be converted to a grade of "F." Any request for an extension must be submitted well in advance for review by the Dean's Committee. A request for extension should be submitted to Dean Wolcowitz in Sears 357 and must be accompanied by a supporting note from the professor in the course involved.

**Maintaining Good Academic Standing
(Handbook pp. 81 – 82)**

Academic standing comprises two elements: credit hours earned at Case and grade point average (GPA). In order to achieve good academic standing by the end of the spring semester, first year students must earn a **total of 21 credit hours and a cumulative grade point average (GPA) of at least 1.75.**

**Case Merit-based Scholarship Retention
(Handbook pp. 83 – 84)**

Case merit-based scholarship (Full-tuition, Trustees', President's and Provost's) renewal is based on two requirements: a minimum number of hours earned after enrolling at Case and a minimum cumulative scholarship grade point average**. The cumulative scholarship gpa requirement is **2.50 at the end of the first year** and 3.00 at the end of each succeeding year. Scholarship recipients will be required to have earned at Case **at least 24 semester hours in the first year**, 54 semester hours by the end of the second year, and 84 semester hours by the end of the third year. Recipients of **Provost's Special Scholarships** must maintain academic good standing to be eligible for continuation of their scholarships.

****Scholarship Grade Point Average:** All courses completed for an evaluative grade at Case are included in the computation of the "scholarship g.p.a." The "**scholarship g.p.a.**" matches the student's cumulative g.p.a., unless the student has used the Repeat Option. If a scholarship recipient has used the Repeat Option for any courses, the original grades in courses for which the final grade has been replaced by RPT will be included in the computation of the cumulative average for the purpose of determining eligibility for scholarship continuation.

National Survey on Student Engagement (NSSE)
Watch your E-Mail
YOU OPINION MATTERS!!! LET YOUR VOICE BE HEARD!!!

Case Western Reserve University participates in a national survey that attempts to assess student success, student satisfaction, student engagement, student learning, and "best practices." These surveys are administered to first year students and seniors. This national assessment allows Case not only to determine how we are doing, but also to compare how we are doing compared to our peer institutions. Many Case initiatives have been created, changed, and/or discontinued on the basis of what we learned from this and other institutional surveys. **The "administration" DOES care about what you think and IS LISTENING!**

You will be receiving email from Dean Wolcowitz within the next few weeks about participating in this survey. Please take the time to complete the survey.

"The National Survey of Student Engagement(NSSE) is designed to obtain, on an annual basis, information from scores of colleges and universities nationwide about student participation in programs and activities that institutions provide for their learning and personal development. The results will provide an estimate of how undergraduates spend their time and what they gain from attending college. Survey items on The College Student Report represent empirically confirmed "good practices" in undergraduate education. That is, they reflect behaviors by students and institutions that are associated with desired outcomes of college.

Institutions will use their data to identify aspects of the undergraduate experience inside and outside the classroom that can be improved through changes in policies and practices more consistent with good practices in undergraduate education. This information is also intended for use by prospective college students, their parents, college counselors, academic advisers, institutional research officers, and researchers in learning more about how students spend their time at different colleges and universities and what they gain from their experiences."

(From the National Survey on Student Engagement website at http://nsse.iub.edu/html/quick_facts.cfm)

Get Experienced! Internship and Career Fair
Thursday, February 22, 11:00 a.m. – 3:00 p.m., Thwing Ballroom

The Case Career Center will be holding the "Get Experienced! Internship and Career Fair" on Thursday, February 22 from 11:00 a.m. – 3:00 p.m. in the Thwing Center Ballroom. This is an excellent opportunity for first year students to speak directly with employers and administrators regarding experiential learning opportunities. It is also a great opportunity to investigate positions, occupations and/or career fields you could pursue with your specific major and background. For more information, please contact the Career Center at 216-368-4446 or visit <http://careercenter.case.edu>

Volunteers Needed! Get Experienced! Internship and Career Fair If you would like to volunteer to help with the Get Experienced! Internship and Career Fair, please attend the Career Fair **Volunteer Information Session on Monday, February 19 from 11:30 a.m. - 12:30 p.m.** For more details, please visit the Upcoming Events Calendar, <http://careercenter.case.edu>



Withdrawing from a Course and "Freshman Forgiveness"
(Handbook, p. 77)

As a first year student subject to the First Year Student Withdrawal Policy, you may withdraw from a course(s) up until the last day of classes -- this spring, that is **April 30, 2007**. In order to withdraw from a class, **you must complete a Drop/Add Form (available in Sears 357, 24-Hour Study Room in Wade, Fribley, or Yost 110) and get the signature of your advisor.** Once that is complete, **come see a Dean in the main Office of Undergraduate Studies in Sears 357 or in a RUSS office to get the Dean's signature.** **After you secure a Dean's signature, you must take the form to the Registrar's Office in Yost 110 for processing.**

Before you seek approval for a withdrawal, please take the time to reflect and review the following issues:

- Why are you withdrawing from this course? How are the rest of your courses going this semester? How do you feel about the withdrawal?
- Have you talked to your professor about your progress/success in the course?
- Have you reviewed the syllabus? Do you know what your chances for improved success are in the course?
- Have you taken advantage of support resources: professors' office hours, tutoring through ESS, SI's, etc.
- Have you thought about how this withdrawal will impact your plans for next semester? Will this withdrawal have an impact on your degree completion?
- Have you considered if Pass/No Pass is an appropriate option? (See below.)

First year students who withdraw from a course in their first two semesters of full time enrollment will not have the withdrawn course listed on their official transcript. However, the transcript will indicate all attempted hours, including those representing a course(s) that was withdrawn.

This policy unique to first year students is at times referred to as "freshman forgiveness" although there is no real policy known by this name. In previous years, grades of F were removed from the transcripts of first year students and those Fs were not calculated into cumulative GPA. That policy is no longer in existence. *Grades of F are calculated into cumulative GPA and are listed on the transcripts of all students.*

Major Exploration Information from the Career Center
<http://studentaffairs.case.edu/careers/student/majors/>

What Can I Do With a Major in...?

The WCIWAMI section features academic majors and provides information on careers typically linked to those majors. For the disciplines offered at Case, the link to the departmental website is provided. For all areas listed, links to professional associations or specific job listings is provided.
<http://studentaffairs.case.edu/careers/student/majors/wcidwami.html>

Occupational Outlook Handbook

The Occupational Outlook Handbook is a nationally recognized source of career information, designed to provide valuable assistance to individuals making decisions about their future work lives. Revised every two years, the Handbook describes what workers do on the job, working conditions, the training and education needed, earnings, and expected job prospects in a wide range of occupations.

<http://www.bls.gov/oco/>

Class Officer Announcements

Spring Snowball 2007

The Annual Spring Snowball will be held on **Saturday, February 24, 2007**. Watch for further information from your First Year Class Officers who are event sponsors.

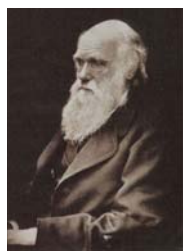
Location: Myers University Club

Time: 9:00 p.m. – 1:00 a.m.

Check with your Class Officers for information about Ticket Purchase.

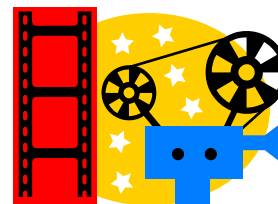
First Year Student Night at Qdoba Mexican Grill
Thursday, February 15, 2007
7:00 - 9:00 p.m.

Watch for more information from your class officers about this event.



Darwin Day Event
6:00 p.m., Monday, February 12, 2007, Clapp 108
"A FLOCK OF DODOS"
by filmmaker Randy Olson

This must-see film provides a searing look into the debate in Kansas over EVOLUTION vs "INTELLIGENT-DESIGN". Check out <http://flockofdodos.com/> or call 368-3703 for more information.



Movies

All movies listed below will be shown at Strosacker Auditorium. For more information, go to <http://films.cwru.edu/>

- 2/16 Doom**
7:00 p.m., 9:00 p.m., 11:00 p.m.
- 2/17 The Scorpion King**
7:00 p.m., 9:00 p.m.
- 2/23 Little Miss Sunshine**
7:00 p.m., 9:00 p.m., 11:00 p.m.
- 2/24 Sneakers**
7:00 p.m., 9:30 p.m.
- 2/24 Serenity**
7:00 p.m., 9:30 p.m., 12:00 a.m.
- 3/2 Casino Royale**
7:00 p.m., 10:00 p.m.
- 3/3 It Happened One Night**
7:00 p.m., 9:00 p.m.



4th Annual Faculty/Staff v. Student Basketball Game
Friday, March 2nd, 5:30 – 6:30 p.m.
Horsburgh Gym

Will Case undergrads be able to come back after their huge upset loss last year? Come cheer on fellow classmates and enjoy watching your favorite faculty and staff members attempt to bring home another win!

And...Check out the winter varsity athletic events (<http://www.case.edu/athletics/varsity/winter/>) and cheer on your fellow Spartans!

Engineering Week

February 18 - 23, 2007

Check out the annual E-Week events and celebrations by viewing the E-Week website: <http://eweek.case.edu>. This year's events include a bridge building competition, battery powered car competition, high school robotics seminar, a Society of Women Engineers luncheon, a festival, a banquet, a leadership breakfast, and events involving the Greater Cleveland Community.