

First Year Student Newsletter

Volume 10.3

November 2005

Produced by
**Julie L. Amon, Assistant Dean for First Year Students
and the Office of Undergraduate Studies**



Greetings from the Dean

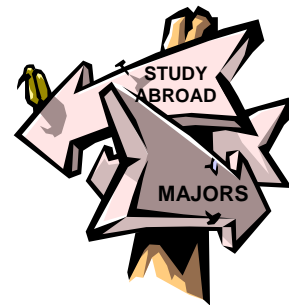
The fall semester keeps racing forward with many exciting events and opportunities. Although it doesn't seem that long ago that you first arrived on campus, you have already received your midterm grades, taken part in many campus events and Case traditions like Halloween at the Farm, and are gearing up for the Choices Fair, Spring 2006 course registration, and final exams!

What a Fall Semester! November is a busy month with a lot of activities to attend and a lot of issues to confront.

First, by now you should have viewed your midterm grades by going to <http://my.case.edu>. I hope that you have had (or soon plan to have) a conversation with your advisor about your midterm progress. Perhaps as a result of your midterm grades you have tried some new study strategies and used some support resources (see p. 5 for more information). If you feel that you still might need to withdraw from a course, please review the information in this newsletter (p. 5) on course withdrawals, talk to your first year advisor, and make sure to get the withdrawal processed before **5:00 p.m. on December 9, 2005**.

I also hope that you have taken advantage of the opportunities to continue to explore your academic interests and opportunities. The all-first year event – Choices 2005 – happens this Friday, November 4th and is yet another opportunity to gather information, make connections, and seek out opportunities for exploration and experience. At Choices you will be placing your name on "Sign-Up" lists for different academic departments. This allows academic departments and student service offices to reach out and connect to you in order to introduce you to their faculty, resources, and opportunities. In addition, you will find that many departmental events have already been planned for the next few months to provide you with the information and experiences that will allow you to make an informed decision about your choice of academic major(s), degree(s), and minor(s). Departmental events already planned for November can be found on pages 3 and 4.

Spring 2006 advising and registration are right around the corner and this issue of the newsletter provides significant information about how to prepare for next semester, and also about the myriad sources of support for you in this advising and registration process.



Choices 2005: Exploring Academic & Experiential Opportunities Fair

**Friday, November 4, 2005
12:30 – 2:00 p.m. – Community Hour
Veale Center**

**** MANDATORY FIRST YEAR STUDENT EVENT ****

- Learn about Case major, minor, and program offerings
- Talk to faculty and student representatives from Academic departments
- Find out about opportunities to participate in Department sponsored events
- Gather information to make an informed decision about declaring a major or minor
- Learn about opportunities to participate in Junior Year Abroad, Co-Op, research and more ...

**HAVE A FREE LUNCH ON
UNDERGRADUATE STUDIES!!!**

Spring 2006 Advising & Course Registration

Advising Appointments with Your First Year Advisor/SAGES Professor

Your SAGES Professor/First Year Advisor should be speaking to you in the very near future (or might have done so already) about setting up advising appointments to discuss your midterm grades and also your plans for Spring 2006. If you haven't heard about this, contact your advisor, and ask to set up an appointment to discuss advising and registration issues TODAY.

In order to register, all students are required to meet with an advisor each semester to discuss their progress and plans for the upcoming semester. Each semester the advising period begins two weeks prior to senior priority registration. Additionally, students only receive their PIN after having met with their advisor.

Prepare

Students have a responsibility to prepare for their advising appointments. Prior to your advising appointment, you should consider the following issues:

- Thoughts on academic major(s), minor(s) – changes, questions and requirements
- If applicable, completed or intended course withdrawals and implications of the withdrawal
- Progress toward completion of General Education/Core/SAGES Requirements (including AP/IB/transfer credit if applicable)
- How the semester has gone so far – grades, use of support resources, favorite class, time management, etc.
- Overall feelings about Case thus far – acclimation, connection, engagement - - any questions that you have
- Courses that you are considering for next semester (and alternates in the event that first choice courses are not available)

Use Your Resources

You should review the following resources and bring them to the advising appointment:

- *2005 - 2006 Handbook for Undergraduate Students*
- Your Degree Progress Report (DPR)
- List of courses that you are considering for the next semester - - make sure to check course availability, course prerequisites and course descriptions by using the **Searchable Schedule of Classes** at https://my.case.edu/portal/page?_pageid=42.1&_dad=portal&_schema=P-ORTAL
- Questions
- Open mind

When to Register

All first year students will begin to register on one of two days as listed below regardless of how many hours of earned credit an individual might have.

Wednesday, November 30
Friday, December 2

Last Names M – Z
Last Names A – L

How to Register

Once you have met with your advisor, you will receive your PIN for Spring 2006 registration. On your appointed registration day, take your list of preferred courses and alternates along with corresponding days, times, and CRNs and **log onto SOLAR** <http://www.case.edu/provost/registrar/onlineereg.html>. I suggest that you also keep open a **Searchable Schedule of Classes** window so you can easily refer to that as needed throughout the registration process.

In preparing to register for your classes via SOLAR, bare in mind that there is a limit to how many people can use SOLAR at any given time. So, if you are unable to connect on your first try, just log-on again a little bit later. Also, registration continues through January 27, 2006 - - the second week of classes.

Still Have Questions?

Departmental Reps/First Year Specialists & Academic Major Info

Have you reviewed major, minor and General Education Requirements associated with your academic area of interest(s) by reviewing your *Handbook*, looking at departmental websites, and making an appointment with a First Year Specialist/Departmental Representative? Faculty serving as departmental representatives can offer you insight on specific courses within a major, research interests of the faculty and undergraduate research opportunities, and general information about the discipline, associated careers, and connections to graduate and professional schools.

RUSS Walk-in Hours

The Residential Undergraduate Studies Satellite (RUSS) offices are located in Wade and Fribley. As an extension of the Office of Undergraduate Studies, you can stop by RUSS for quick advising information and academic resources. Both appointment and walk-in advising appointments are available. RUSS will be staffed by Dean Amon, Steve Mousetes, Dean Pieri, or Dean Hamel. Contact the main Office of Undergraduate Studies at 368-2928 to call about weekly appointment and walk-in availability.

Wade

Monday & Tuesday

Appointments: 5:30 and 6:00 p.m.
Walk-ins: 6:30 – 8:00 p.m.
CaseFAM: 8:15 – 9:30 p.m.

Fribley

Tuesday & Wednesday

Appointments: 5:30 and 6:00 p.m.
Walk-ins: 6:30 – 8:00 p.m.
CaseFAM: 8:15 – 9:30 p.m.

University Seminars in Spring 2006

All first year students should make an effort to include a University Seminar in their spring semester schedule. You are required to complete two University Seminars from two different thematic areas by the end of your fourth semester. University Seminars are offered in three themes: *Thinking about the Natural World (USNA 2xx)*, *Thinking about the Social World (USSO 2xx)*, and *Thinking about the Symbolic World (USSY 2xx)*. University Seminars are still being added to the spring schedule so make sure to keep checking the Searchable Schedule of Classes for new offerings.

Physical Education in the Spring Semester

All first year students should plan on registering for Physical Education Activity course(s) in the spring semester. You may include one or two ½ semester courses, a full semester course, or a Varsity Sport.

Registering for Courses Requiring a Permit

Some courses require instructor permission to register. There are two ways in which an instructor can grant permission to enroll to a student: (1) a paper form that is presented to the Registrar's Office with the accompanying drop/add form; or (2) an electronic permit used in concert with SOLAR registration. It is important to remember that the issuing of a permit does not mean that a student is registered for the course. The permit must be accompanied by a registration action – either on paper/in person or on-line through SOLAR. <http://www.cwru.edu/provost/registrar/online/permitfaq.html>

Exploring Major, Minor & Career Options



CaseFAM Registration Raves Assistance with Advising, Registration, Academic Major Exploration

CaseFAM Peer Advisors will be visiting first year residence halls and spots on campus to offer assistance for first year students with advising, registration, and major exploration questions. Please stop by and meet the Peer Advisors!

Nov. 8 8:00 – 10:00 p.m. - Hitchcock, Howe, Sherman, Taft
 Nov. 11 12:30 – 1:45 p.m. - Thwing Atrium
 Nov. 16 8:30 – 10:30 p.m. - Pierce, Raymond, Smith, Staley
 Nov. 17 11:15 a.m. – 1:00 p.m. - Nord Atrium
 Nov. 21 8:30 – 10:30 p.m. - Alumni, Norton, Pierce, Tyler
 Nov. 28 9:00 – 11:00 p.m. - Hitchcock, Howe, Sherman, Taft
 Dec. 1 11:15 a.m. – 1:00 p.m. - Nord & Thwing Atria

Childhood Studies Open House November 8, 4:00 – 5:00 p.m. Mather Memorial 201

Come learn about this interdisciplinary minor and how it might be of interest and benefit to you!

Get to Know the Classics Department "Eating Our Tables" November 9, 12:30 – 1:30 p.m. Mather House 408

Pizza and Information Served.

Philosophy Department Open House November 17, 11:15 a.m. – 1:00 p.m. Clark Hall 209

Visit the Philosophy Open House to see if a major or minor might be of interest to you.

Biology Gala November 18, 12:30 – 2:00 p.m. Hovorka Atrium

Learn about the Biology major and minor programs, see displays of current undergraduate research and departmental research, learn about course offerings, getting involved in research, and SAGES capstone options.

Exploring Art History – Toledo Museum of Art SAVE THE DATE! November 19, 2005

Sponsored bus trip to the Toledo Museum of Art. For further details and/or to participate in the museum visit, please contact Dr. Anne Helmreich at anne.helmreich@case.edu.

Parade of Engineering Majors Nord Atrium Fall Semester Community Hours (Fridays, 12:30 – 2:00 p.m.)

Faculty representatives will be on hand to discuss different engineering majors, areas of faculty interest and research, opportunities for academic exploration, and ways in which first year students can get involved in research.

November 3*	Materials Science & Engineering (*Provost Hour)
November 11	Civil Engineering
November 18	Macromolecular Science & Engineering
December 2**	EECS (Electrical Engineering, Computer Engineering, Systems & Control Engineering, and Computer Science) (** OLIN ATRIUM)
December 9	Biomedical Engineering

Career Center Resources & Programming Opportunities in November

The Career Center can be of tremendous assistance in the exploration and/or clarification of your academic and career interests. I encourage you to check out their website <http://studentaffairs.case.edu/careers/>, and specifically make sure you check out the **Researching Major and Careers** link <http://studentaffairs.case.edu/careers/student/majors/>. In addition to career and major exploration, the Career Center staff can also help you work through self-assessment instruments to learn how your interests, skills, and personality might impact your major/career decisions.

Visit the Career Center website to check out monthly programming:
<http://studentaffairs.case.edu/careers/calendar/month.aspx>

Nov. 2	Beyond the Resume: Etiquette in the Information Age
Nov. 10	Who's in Demand in the 21 st Century/Job Outlook
Nov. 16	Effective Decision Making in Choosing a Major
Nov. 16	Building & Managing a Career Outside Northeast Ohio
Nov. 30	Biomedical Science: An Introduction to Industry Culture



SOURCE
Support of Undergraduate Research and Creative Endeavors

Dr. Sheila Pedigo is in charge of the SOURCE Office and serves as a resource to any undergraduate seeking opportunities to get involved in research in any academic area. Make sure you visit her table during the Choices Fair and also consider attending some of the upcoming SOURCE informational sessions. If interested in attending a session, please RSVP to Dr. Pedigo by emailing her at sheila.pedigo@case.edu.

- Nov. 10 **Navigating the Government Websites: In Search of a Summer Research Position**, 12:00 p.m., Nord 516
 Nov. 29 **How to Find a Campus Research Position**, 5:00 p.m., Nord 304
 Nov. 30 **How to Find a Summer Research Position**, 4:30 p.m., Nord 516

**Interested In Study Abroad or Exchange Programs?
 Information Session,
 November 7, 4:00 – 5:00 p.m., Nord 410**

Have you considered spending your junior year studying abroad? Would you consider being an international exchange student or visiting Fisk University as an exchange student? Come to this information session to learn more. It's never too early to plan ahead!

**3rd Annual Get Experienced Program
 Friday, December 2, Nord 310
 11:30 a.m. to 1:30 p.m.**

Learn about various experiential learning opportunities. Breakout sessions are held for students interested in getting info about internships, research & community service. RSVP via eCompass by Dec. 1

**Annual Wittke/Jackson Lecture
 Wednesday, November 2, Nord 310, 4:30pm - 5:30pm
 Refreshments**

Wittke Award Winners: Robert Dunn, Music
 Robert Harris, Chemical Engineering

Jackson Award Winner: Heath Demaree, Psychology

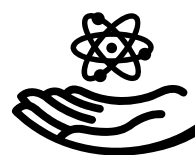
These award-winning faculty members will speak briefly about the paths that led to their academic choices and will share why they love teaching.

The Wittke/Jackson Lecture highlights the winners of the Carl F. Wittke Award for Excellence in Undergraduate Teaching and the J. Bruce Jackson, M.D., Award for Excellence in Undergraduate Mentoring. These prestigious awards are presented annually at the Spring Commencement. The winners are nominated each year by students or recent alums and are selected by student selection committees. For more information, see <http://studentaffairs.case.edu/enhancement/wittkejackson/>

**Einstein's Legacy—Science, Technology & Culture
 Through the 21st Century
 A 2005 World Year of Physics Event
 Monday, November 14, 12:30 p.m.
 Severance Hall**

<http://www.case.edu/events/physics/>

Four internationally known figures, including two Nobel Laureates, and two bestselling authors, will come together on November 14, 2005—along with moderator Ira Flatow, host of "Science Friday" on NPR—to discuss the impact of Einstein, and the science that followed him, on all aspects of our modern world. Check out the website listed above for complete details.



**Community Hour Programming in November
 Fridays, 12:30 – 1:45 p.m.**

Friday, November 11

Case Diversity and Cultural Fair

12:30 – 4:00 p.m. Thwing Ballroom and 2nd Floor Rooms

Friday, November 18

Public Policy Roundtable: HIV Treating HIV/AIDS in Uganda by Dr. Janet McGrath, Department of Anthropology
 12:30 – 1:30 p.m., Spartan Room, Thwing Center

**Conversations about Writing by Thrity Umrigar
 Work-In-Progress Colloquium Series
 Thursday, November 10, Clark Hall 206
 4:00 p.m. Refreshments; 4:30 p.m. Presentation**

Thrity Umrigar will read from and discuss her upcoming novel, *The Space Between Us* (Harper Collins). The novel is set in Bombay and tells the story of two women — Sera Dubash, an upper middle-class Bombayite and Bhima, the illiterate, impoverished woman who works for her as a domestic servant. In this novel, Umrigar explores issues of class, gender, loyalty, and betrayal. Umrigar will talk about the contemporary class situation in urban India and about the events that led to the idea for the book.

Major Exploration Information Available On-Line

<http://www.case.edu/provost/ugstudies/year1/year1.htm>

General information on how to explore majors is provided on the Undergraduate Studies website under the First Year Student Link listed above. Information includes the PowerPoint presentation from the SAGES 4th session in September as well as the Academic Information Sheets distributed at the October 4th Hour Sessions (e.g. The Social Sciences).

Withdrawing from a Course and "Freshman Forgiveness" (Handbook, p. 79)

As a first year student subject to the First Year Student Withdrawal Policy, you may withdraw from a course(s) up until the last day of classes - - this fall, that is **December 9, 2005**. In order to withdraw from a class, **you must complete a Drop/Add Form (available in Sears 357, RUSS, or Yost 110) and get the signature of your advisor**. Once that is complete, **come to the Office of Undergraduate Studies in Sears 357 or RUSS for a Dean's signature**. **After you secure a Dean's signature, you must take the form to the Registrar's Office in Yost 110 for processing.**

Before you seek approval for a withdrawal, please take the time to reflect and review the following issues:

- Why are you withdrawing from this course? How are the rest of your courses going this semester? How do you feel about the withdrawal?
- Have you talked to your professor about your progress/success in the course?
- Have you reviewed the syllabus? Do you know what your chances for improved success are in the course?
- Have you taken advantage of support resources: professor office hours, TUBA and on-going tutoring through ESS, SI's, etc.
- Have you thought about how this withdrawal will impact your plans for next semester? Will this withdrawal have an impact on your degree completion?
- Have you considered if Pass/No Pass is an appropriate option? (See below.)

First year students who withdraw from a course in their first two semesters of full time enrollment will not have the withdrawn course listed on their official transcript. However, the transcript will indicate all attempted hours, including those representing a course(s) that was withdrawn.

This policy unique to first year students is at times referred to as "freshman forgiveness" although there is no real policy known by this name. In previous years, grades of F were removed from the transcripts of first year students and those Fs were not calculated into cumulative GPA. That policy is no longer in existence. *Grades of F are calculated into cumulative GPA and are listed on the transcripts of all students.*

Pass/No Pass (Handbook p. 81)

If you are a full-time student (enrolled in 12 credit hours) in good academic standing, you have the option of electing to have **one course** graded on a Pass/No Pass basis. **In order to do this, the course must NOT:**

- Be a course required for your SAGES General Education/Core Requirements
 - Be a course required for an intended major or minor
- i.e. The Pass/No Pass option may only be used for Open Electives.

The Pass/No Pass option may be exercised by filing a form in the Office of Undergraduate Studies, Sears 357 during the last 3 days of classes – December 7, 8 or 9, 2005.

Instructors are not notified of a student's use of this option. They are required to submit evaluative grades for all students and these are converted to Pass/No Pass in the Registrar's Office. Grades of P earn credit but are not calculated into the cumulative GPA. Grades of NP do not earn credit and are not calculated into the cumulative GPA.

Time Management, Reading Efficiency, Note-taking Strategies, Test-taking Strategies, and More...

If your high school study strategies aren't enough and you would like to find better ways to study, make an appointment to see a study skills specialist from the office of Educational Services for Students <http://studentaffairs.case.edu/education/>. ESS staff will help you find the best way for you to study by looking at your learning style preferences and your fall schedule.

Bring your notes and texts from your most challenging course(s) when you come to your appointment.

Maintaining Academic Good Standing (Handbook p. 83)

Academic standing comprises two factors: credit hours earned and GPA. To maintain good academic standing at the end of the first semester, a first year student must earn **at least 9 credit hours with a 1.70 GPA. By the end of the first year, students must earn a total of 21 credit hours with a 1.75 GPA.** A student who does not meet these minimum requirements will be placed on academic probation.

Incompletes (Handbook p. 80)

An Incomplete (I) can only be assigned by the professor if there has been a previous conversation with the student outlining extenuating circumstances, explained before the assignment of the grade, which clearly justifies an extension of time beyond the requirements established for and met by other students in the class. Additionally, an Incomplete can only be assigned if the student is passing the course and only one small segment of the course remains to be completed. An Incomplete cannot be assigned because a student is absent from a final exam unless the Dean of Undergraduate Studies has authorized the absence in advance.

Fall Final Exams Schedule (Handbook p. 76)

It is important that you consult your syllabus and the final exam schedule. Final exams dates will not be altered to accommodate travel plans. You can find the Final Exam Schedule on the Registrar's website at

<http://www.cwru.edu/provost/registrar/exams/exam061.html>

Make sure you confirm your exam schedule and make your travel plans accordingly.

12/9	Last Day of Classes
12/12, 12/16	Reading Days
12/13	Final Exams Begin
12/21	Final Exams End

* No student will be required to take more than two final examinations on a single day. A student who has three final examinations scheduled for a single day should go to the Office of Undergraduate Studies and obtain the assistance of the Dean in arranging to take one of those examinations on an alternative day during the final examination period. Similarly, a student with conflicting examinations should seek the assistance of the Dean of Undergraduate Studies in arranging to have the time of one examination changed. **Please contact Ms. Heidi Bocan at heidi.bocan@case.edu by November 22, 2005 to ask for accommodations.**

Degree Progress Reports (DPR's) and AP, IB and Transfer Credit

Degree Progress Reports are generated by the Office of Undergraduate Studies for all students. The DPR documents progress toward degree completion. It lists completed courses in addition to remaining courses. This document will become an even more important resource after you declare your major. **As a first semester student, you should check your DPR especially if you anticipate earning AP, IB or transfer credit.** The Office of Undergraduate Studies has posted all AP, IB, and transfer credit that has been received/evaluated. You can access your DPR through the following website: <http://my.case.edu>

If you feel that you are missing earned credit, please send me an e-mail so I can check into it.

Free ESS Planners

If you haven't picked up your free ESS planner, they are still available in the ESS office, Sears 470, Monday through Friday, 9:00 a.m. to 4:30 p.m.



**Read Any Good Books Lately?
Help Select the Common Reading for Next Year's First Year Students**

Nomination Deadline: November 17

<http://studentaffairs.case.edu/orientation/reading/>

The committee is looking for works of fiction or non-fiction. Books should:

- ♦ appeal to young adults,
- ♦ address issues relevant to new college students,
- ♦ prompt inquiry, reflection, and discourse,
- ♦ differ from usual high school reading assignments,
- ♦ be available in paperback.



LeaderShape

<http://studentaffairs.case.edu/division/leadershape/default.html>

Application Deadline: November 11, 2005

LeaderShape is a unique experience designed to foster community, integrity, and leadership in its participants. This truly energizing and inspiring experience will challenge and change you, as well as build your leadership potential. This year's LeaderShape will take place January 8-13, 2006 at Camp Asbury. The cost for this 6-day program is \$135 and some scholarships may be available.

Applications are available on-line at

<http://studentaffairs.case.edu/division/leadershape/apply.html>.

Application Deadline: November 11, 2005. Any questions about this opportunity should be forwarded to leadershape@case.edu.

Be a Volunteer. Change a Life.

Interested in getting off campus and involved in service throughout greater Cleveland. Click the link for a list of service sights ranging from tutoring inner city students to helping out at shelters. Click the following link and to sign up by clicking Case Serves! <http://studentaffairs.case.edu/service/>

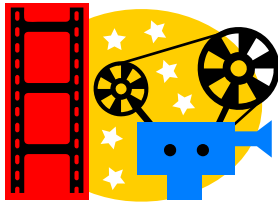
Be a Future RA or LA!!

The Office of Housing, Residence Life, & Greek Life is currently seeking to recruit a qualified and diverse pool of undergraduate students for several unique positions for the 2006-2007 Residence Life Staff. This office proudly offers two distinctive undergraduate positions. Residence Life staff members are the backbone of our residential program and help provide a positive, inclusive community environment for students at Case Western Reserve University.

Resident Assistants are undergraduate students who assist students living in the community by serving as a resource and peer counselor. They are responsible for developing and implementing a comprehensive, inclusive community program plan, monitoring and documenting student behavior, and reporting and monitoring building operation concerns within an assigned residential college or complex.

Learning Assistants are undergraduate students who have demonstrated personal academic success (have at least a 3.3 semester and cumulative GPA) and are committed to enhancing the academic experience at Case Western Reserve University. As student academic consultants, the LAs work in the Residential Colleges providing information and programs aimed at increasing academic success for first-year students.

The Resident Assistant and Learning Assistant positions offer the opportunity to develop leadership and peer counseling skills and are great ways to get involved in student life at Case Western Reserve University. **Applications are available at <http://housing.case.edu/jobs> and in the NRV & SRV Area Offices.** If you have any questions about the RA/LA positions or the selection process please contact Laurie Tuttle, First Year Coordinator at lm19@case.edu or 754-4381.



Movies

All movies listed below will be shown at Strosacker Auditorium. For more information, go to <http://films.cwru.edu/>

- 11/4 Charlie and the Chocolate Factory**
7:00 p.m., 9:30 p.m., 12:00 a.m.
- 11/5 House of Flying Daggers**
7:00 p.m., 9:30 p.m.
- 11/11 Sideways**
7:00 p.m., 9:30 p.m., 12:00 a.m.
- 11/12 Batman Begins**
7:00 p.m., 10:00 p.m.
- 11/18 The Sisterhood of the Traveling Pants**
7:00 p.m., 9:30 p.m., 12:00 a.m.
- 11/19 Star Wars: Episode V – The Empire Strikes Back**
7:00 p.m., 11:00 p.m.
- 12/2 The Hitchhiker's Guide to the Galaxy**
7:00 p.m., 9:30 p.m., 12:00 a.m.
- 12/3 Pieces of April**
7:00 p.m., 9:00 p.m.

Seminars, Talks, Colloquia, Performances

- 11/8 Learning to Read: What Twins Can Tell Us – Lee Thompson**; Location: Clark Hall 206; 11:45 a.m.
- 11/8 Darwinian Medicine: New Approach to Health and Disease – Paul Sherman (Cornell University)**; Location: Clapp Hall 108; 4:30 p.m.; for more information contact the Evolutionary Biology program.
- 11/10 Frontiers of Astronomy Lecture Series – Einstein's Biggest Blunder: A Cosmic Mystery Story – Lawrence Krauss**; Location: Cleveland Museum of Natural History; 8:00 p.m.; for more information contact the Department of Astronomy.
- 11/10 The Challenge of Physiological Genetics: How to Dissect Complex Signalling Pathways – Professor Pierre Chambon (Institut Clinique de la Souris (ICS) and Institut de Génétique et de Biologie Moléculaire et Cellulaire (IGBMC), Illkirch, France)**; Location: Wolstein Auditorium; 4:00 p.m.; for more information contact the Skeletal Research Center.
- 11/11 Public Affairs Discussion Group: Radios or Religion? Why Amish Youth Choose a Horse and Bugy Lifestyle in the 21st Century – Jill Korbin and Lawrence Greksa**; Location: Toepfer Room, Adelbert Hall; 12:30 p.m.; for more information contact the Department of Anthropology.
- 11/13 Wind Ensemble**; Location: Harkness Chapel; 2:30 p.m.; for more information, contact the Department of Music.
- 11/15 Deformation And Phase Transformations In Laves Phases - Dr. K. Sharvan Kumar (Brown University)**; Location: White Building 411; 4:00 p.m.; for more information contact the Department of Materials Science and Engineering.

Seminars, Talks, Colloquia, Performances cont...

- 11/17 Embryonic Stem Cells for Tissue Engineering – Horst von Recum**; Location Wickenden 322; 12:00 – 1:00 p.m.; for more information contact the Department of Biomedical Engineering.
- 11/17 A Thermodynamic Perspective on Self-Assembled Monolayer Formation – Dan Schwartz (university of Colorado – Boulder)**; Location: A.W. Smith 329, 11:30 a.m.; for more information contact the Department of Chemical Engineering.
- 11/28 Mathematics Colloquium: Solution of Shannon's Problem on the Monotonicity of Entropy – Professor Shiri Artstein (Princeton University)**; Location: Yost Hall 300; 3:00 p.m.; for more information contact the Department of Mathematics.

Campus Events – University Program Board (UPB) Calendar
<http://upb.case.edu/>

- 11/5 Undergraduate Indian Students Association Annual Cultural Show**; Location: Thwing Ballroom; Time: 5:30 p.m.; Tickets: \$10 for Case students; Non-Case students - \$15.
- 11/9 Concert: Phosphorescent/The Deaths**; Location: The Spot; Time: 9:00 p.m.
- 11/16 Concert: Plumerai/Autumn Thieves**; Location: The Spot; Time: 9:00 p.m.



Theater and Dance Events in November

SIX CHARACTERS IN SEARCH OF AN AUTHOR
by Luigi Pirandello
Directed by Stephen McCue
November 11, 12, 17, 18, 19 at 8:00 p.m.
November 13 and 20 at 2:30 p.m.

This fascinating play-within-a-play is the classic Absurdist Drama. It is also Pirandello's most popular and controversial work in which six characters invade the stage and demand to be included in the play.

Melange
November 11-12 & 17-19, 2005, 8:00pm
November 13, 2005, 2:30pm

Martha Graham's 'Panorama', a rarely seen dance work for an extended ensemble, with an Alexander Calder inspired mobile, shares the program with Gary Galbraith's 'Technotic Episodes'.

Save the Date - Dec. 12th
The Legendary Math Gala
Rears Its Ugly Head Once Again