

First Year Student Newsletter

Volume 9.4

February 2005

Produced by
Julie L. Amon, Assistant Dean for First Year Students
and the Office of Undergraduate Studies

Greetings from the Dean

EXPLORATION: PART DEUX

Greetings! Hopefully, you have been taking some of my advice from the last newsletter and have been exploring your academic options this semester. Now is the time to explore and/or clarify your academic interests prior to the major declaration period for first year students.

First year students who are ready to declare a major will do so starting on March 1, 2005. The declaration period extends until March 18, 2005. Students still in the process of exploring academic options are not required to declare during this time frame; however, it is important that all first year students are working toward the clarification of academic interests.

YOUR MAJOR CAN BE CHANGED IF YOU CHANGE YOUR MIND LATER. If you change majors later on, that's fine -- many students do change (or add) majors as they discover new interests. **IF YOU STILL FEEL UNDECIDED,** but you have a pretty good idea of what your major will be, declare it so you'll be in touch with a departmental adviser. It's OK to change your mind later and "undeclare." **IF YOU'RE TRULY UNDECIDED,** continue to explore, to talk with your advisor and other faculty members, and to use the resources of the Career Center (Sears Room 206, 368-4446). So long as you are actively engaged in exploring your interests and in making a decision, you can hold off for a bit. However, you should try to reach a decision as soon as possible.

Carefully review the procedures listed below and complete this process March 1 - 18, 2005.

1. Obtain a Declaration of Major Form in the Office of Undergraduate Studies, Sears 357 (also available in the 24-Hour Study Room in Wade), and take the form to the department representative in your intended major for his/her signature and assignment of a major advisor. A list of representatives is in your *2004 - 2005 Handbook for Undergraduate Students*, and is posted outside Sears 357.
2. All students must also select which General Education/Core Requirements they are following. **SAGES Participants:** Make sure that you *additionally* check that you are a SAGES participant.
3. Bring the completed form to the Office of Undergraduate Studies, Sears 357. *The declaration of major is not official unless it is submitted to the Office of Undergraduate Studies.*

****RESCHEDULED****

**Image vs. Reality:
Are We Who We Say We Are?**

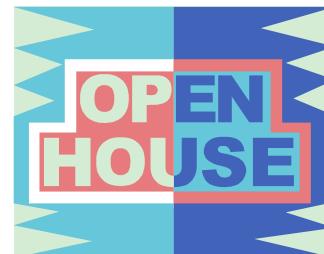
**12th Annual Academic Happy Hour,
Friday, February 25th, 12:20 - 2:00 p.m.,
Thwing Ballroom**

Join **President Hundert**, fellow students, faculty, and staff for an **interactive dialogue** about our **image** and our **reality** at **Case**.

If you were making a Case commercial, what would you include?

At the Academic Happy Hour, the Ballroom is always packed, and the discussion is lively!

FREE Chipotle and beverages will be provided.



**ESS Open House
Friday, February 4, 2005
12:30 - 2:00 p.m.**

Drop by to see ESS's new space, including a new computer center in Sears 470.

Food and Freebee's for You!

Over the Winter Break, the Office of Educational Services for Students moved from the Kelvin Smith Library to Room 470 in the Sears Building around the corner from the Nord computer lounge and above the Office of Undergraduate Studies. Make sure you check out their new location and new resources as a way to kick off a successful spring semester. The ESS phone (368-5230) and website <http://ess.case.edu> remain the same.

FREE Help for with Your Courses

ESS provides two high quality programs for FREE! If you need individual help, we have Peer Tutors available in over 70 courses. Schedule your appointments using the new TutorTrac on-line software program. The link and instructions are on the ESS website, <http://ess.case.edu>.

The Supplemental Instruction (SI) program provides additional support in traditionally difficult courses. SI sessions allow you to practice problems with guidance, provide explanations of concepts in your language, and help you gain a deeper understanding of the material. SI Leaders are your peers who have done well previously in the course, so they give tips on how you can succeed. The SI schedule is available on the ESS web site, <http://ess.case.edu>. The Math SI Schedule can be found at <http://www.case.edu/artsci/math/butler/mathsi.htm>. Large group sessions are listed below. Check the above website for a comprehensive list including small group sessions.

Course	Day Time	Location	SI Leader
BIOL 119	Sun. 3:00 p.m.	Wade	Lindsay McGowen
	Tues. 8:00 p.m.	Clark 205	Lindsay McGowen
BIOL 214	Tues. 5:15 p.m.	Wade	Jill Remaly
	Thur. 4:00 p.m.	KHS 123	Jill Remaly
BIOL 216	Sun. 4:30 p.m.	DeGrace 312	Puja Samudra
	Wed. 6:00 p.m.	DeGrace 312	Puja Samudra
CHEM 106	Sun. 4:30 p.m.	Wade	Pritu Mehta
	Sun. 7:00 p.m.	Wade	Kunal Lodhia
	Mon. 3:30 p.m.	Clapp 108	Kunal Lodhia
	Mon. 5:00 p.m.	Wade	Mark Sgambellone
	Tues. 4:15 p.m.	Clapp 201	Pritu Mehta
CHEM 224	Tues. 7:00 p.m.	Wade	Mark Sgambellone
	Sun. 3:30 p.m.	Wick. 322	Irene Nagle
	Sun. 7:00 p.m.	Wick. 322	Jennifer Angelotti
	Tues. 7:00 p.m.	Wick. 322	Irene Nagle
CHEM 302	Wed. 7:30 p.m.	Wade	Jennifer Angelotti
	Sun. 2:00 p.m.	Rock. 301	Andrea Cendrowski
	Wed. 7:00 p.m.	Rock. 301	Andrea Cendrowski
ENGR 145	Sun. 6:30 p.m.	Clark 302	Axel Reimer
	Mon. 3:00 p.m.	Yost 102	Phil Imbesi
	Mon. 9:00 p.m.	Clark 302	Axel Reimer
MATH 121	Wed. 7:00 p.m.	Clark 308	Phil Imbesi
	Mon. 6:30 p.m.	Wade	Brian
MATH 122	Thur. 6:30 p.m.	Wade	Brian
	Mon. 8:00 p.m.	Wade	Kevin, Phil & Chris
MATH 125	Thur. 6:30 p.m.	Wade	Chris, Chris & Jordan
	Mon. 6:30 p.m.	Wade	Becky
MATH 126	Mon. 8:00 p.m.	Wade	Beth & Sebastian
	Thur. 8:00 p.m.	Wade	Erin & Justyna
PHYS 116	Sun. 2:00 p.m.	Bing. 204	Galina Nikolskaya
	Thur. 5:00 p.m.	Bing. 204	Galina Nikolskaya
PHYS 121	Tues. 6:30 p.m.	Rock. 304	Paul Bach
	Thur. 5:00 p.m.	Rock. 304	Paul Bach
	Thur. 6:30 p.m.	Clark 205	Nicholai Salovich
PHYS 122	Wed. 6:00 p.m.	Rock. 309	Ben Lawrie
	Thur. 4:15 p.m.	Rock 309	Ben Lawrie
	Thur. 8:30 p.m.	Clark 205	Nicholai Salovich
PHYS 221	Wed. 4:00 p.m.	Rock. 303	Ravi Shekhar
	Thur. 7:00 p.m.	Sears 350	Ravi Shekhar



Summer School and the Off-Campus Study Request Process (Handbook p. 86)

Applications now available in Undergraduate Studies and on-line at <http://www.cwru.edu/provost/ugstudies/offcampusrequestform2005.pdf>

Many of you have asked questions about taking summer classes at institutions other than Case. Can you do this? Yes. As with most processes at a university, there are policies, procedures and paperwork. Read the information in your handbook and then if you are still interested, come in to Sears 357 to pick up the **Off-Campus Study Request Form - available in early February**. In order to complete the Off-Campus Study Request, you must collect course descriptions for the course(s) that you are interested in taking. The course(s) will be evaluated by Ms. Claudia Anderson, Director of Advising and Evaluation of Off-Campus Study.

The deadline for submission of the request is **April 15**. Most universities and colleges begin to post summer schedules in February and March, and you do need to wait to submit the form until you have actual course offerings to review. However, the sooner you complete the form, the sooner you will be notified if the course that you are interested in taking has been approved.

For those of you who live in Cuyahoga County, please pay special attention to the specific residency restrictions listed in the *Handbook*.

Don't forget that Case also offers summer courses and the tuition is $\frac{1}{2}$ price for these courses. You can check out our offering in the Schedule of Classes at <http://www.cwru.edu/courses/catalog/>.

Orientation Leader Application Deadline - February 11th

Applications are now available on line at www.case.edu/orientation. Orientation Leader benefits include: a stipend for each Summer Session, learning to work in a team, networking opportunities, making a positive difference on campus, and resume building opportunities! **The deadline to apply is Friday, February 11, 2005**. Please contact Kate Police at cjp18@case.edu or 216.368.8827 with any questions.



Room Selection Coming Soon!

An important part of the spring semester is selecting where you are going to be living next year. All second year students are required to live on campus, unless they are commuting from home.

Right now, it is important for you to begin thinking about your living options for next year. They include:

- Adelbert buildings (Clarke Tower, Cutler and Storrs) - singles, doubles or suites
- [Village at 115 Apartments](#), houses 6 & 7 (2 through 9 bedroom apartments)
- [Living/Learning Communities](#) -unique living communities focused on a specific area of interest. For more information, please visit: <http://studentaffairs.case.edu/living/housing/selection/ivinglearning.html>
- Greek Housing
- Theme Housing - more information to come as this option is developed

In addition, you also need to consider who you want to live with. So begin those conversations with your friends now!

For additional information regarding room selection, please visit: <http://studentaffairs.case.edu/living/housing/selection/> and <http://studentaffairs.case.edu/living/housing/selection/villageat15.html>

Information on the detailed selection process, which will include the specific dates and how the selection will occur, will be available in early March. Look for information about open houses up at the apartment mock-up at Carlton Commons!

Sign up for Spring SatCo!

Case's Saturday College (SatCo) is on **Saturday, February 26, and Sunday, February 27**. All classes are open to students, staff, faculty, alumni, and community members; all you have to do is register for the class you want! Our Spring SatCo classes include: a Community Service Project with Habitat for Humanity; Managing Stress; Art Museum Tours; a Musical: Triple Espresso at the Hanna Theater; Tap Dancing, and much more! **Registration begins Monday, February 7, and you can signup online at <http://studentaffairs.case.edu/vision/satco/>.**

Civic Engagement Theme Housing Opportunity APPLY TODAY!

The Office of Student Community Service would like to announce that Case Western Reserve University via Housing, Residence Life, and Greek Life are introducing themed housing and have decided to make Civic Engagement one of the three options offered next academic year. The Civic Engagement Community is a transformative and innovative approach to second-year housing. Residents will engage in activities benefiting the Greater Cleveland Community and will serve as leaders in providing service, and promoting social justice, as well as other avenues of activism. Please visit the following website for the application:

<http://studentaffairs.case.edu/living/housing/selection/themehousing.html> .

College Scholars Program Application Deadline February 15

<http://www.case.edu/artsci/scholars/>

The College Scholars Program (CSP) at Case is designed for a small group of outstanding undergraduates (approximately 20 are accepted each year) in the arts, humanities, sciences, engineering, nursing, mathematics and natural sciences, and the social sciences, who are interested in exploring how academic learning can address larger world concerns. The program emphasizes broad interdisciplinary learning and the moral demands of leadership - both on the Case campus and beyond - and promotes self-discovery and community building by students.

Students selected as College Scholars enroll together in the fall of their sophomore year and move as a cohort through the program. To enhance their experience in the program, student have the option to live together in a common residence- a special suite with single rooms and a fully-equipped kitchen in the new Residential Village on the north side of the Case campus.

Each class year emphasizes a difference set of experiences, including opportunities to develop communications and leadership skills, sessions with renowned leaders and experts, and the design, conduct, and presentation of a senior project that applies individual expertise to a social or significant issue important to the surrounding community.

This three-year, eighteen-credit-hour honors program is open to Case freshmen with a diversity of interests and perspectives. Applications are accepted once a year, at the beginning of the spring semester.



Winter 2005 Career Fair
 Thursday, February 17, 2005
 12:30 - 4:30 p.m.
 Thwing Ballroom

The Winter 2005 Career Fair is being held on Thursday, February 17th, 12:30 - 4:30 p.m. in the Thwing Center. This is an ideal opportunity for students and employers to come together to discuss career-specific information and to learn more about internship, co-op, full-time, and part-time opportunities. Ideally, these discussions will yield information that will enhance students' career planning and satisfy employers' recruiting needs.

An array of hiring employers from private industry, government, and the non-profit sector have registered for Career Fair, including Bridgestone Americas, General Electric, the Federal Reserve Bank of Cleveland, Rockwell, and the Peace Corps. A complete list of participating employers will be available on the Career Center web site (<http://studentaffairs.case.edu/careers/>) beginning February 11th.

In anticipation of Career Fair, the Career Center is hosting a "How to Work a Career Fair" workshop on Thursday, February 10th, 6:30-7:30 p.m. in Clapp 108.

The workshop is designed to help students prepare for the Career Fair by learning more about researching companies, presenting yourself on paper and in person, and following up with your new contacts after Career Fair. Interested students can register for this workshop on eCompass (<http://studentaffairs.case.edu/careers/>).

Summer Internships

In addition to Career Fair, internship opportunities have also been posted to the eCompass web site. Students interested in securing a summer internship are encouraged to:

1. Visit the eCompass web site;
2. Come into the Career Center to have their resumes critiqued during weekly walk-in hours;
3. Learn more about the Summer on the Cuyahoga internship program (<http://www.caseontheCuyahoga.com/>), an intensive summer immersion internship program based in Cleveland.

RUSS

Residential Undergraduate Studies Satellite

The Resource Center at Wade
 (Beyond the 24 Hour Quiet Study Area)
 Mondays - Wednesdays
 Appointments available at 5:30 p.m. and 6:00 p.m.
 Walk-ins welcome 6:30 - 8:00 p.m.

Have a quick question; need to withdraw from a class; wondering about how to get connected to academic opportunities? Come visit the Deans from the Office of Undergraduate Studies at RUSS, Mondays - Wednesday from 5:30 - 8:00 p.m..

Resources including GER/Core checklists, drop/add forms, Pre-Med and Pre-Law Handouts and additional handouts are available in the 24-Hour Study Area in the Resource Center at Wade.

Spring Final Exams Schedules (Handbook pp. 84-85)

Believe it or not, it's not too early to review your spring final exam schedule. It is important that you consult your course syllabi and the on-line final exam schedule. Final exams dates *will not* be altered to accommodate travel plans. You can find the Final Exam Schedule on the Registrar's website at <http://www.cwru.edu/provost/registrar/exams/exam042.htm>. Make sure you confirm your exam schedule and make your travel, work or school plans accordingly.

4/25	Last Day of Classes
4/26 - 4/27	Reading Days
4/28	Final Exams Begin
5/5	Final Exams End

NOTE: No student will be required to take more than two final examinations on a single day. A student who has three final examinations scheduled for a single day should go to the Office of Undergraduate Studies and obtain the assistance of the Dean in arranging to take one of those examinations on an alternative day during the final examination period. Similarly, a student with conflicting examinations should seek the assistance of the Dean of Undergraduate Studies in arranging to have the time of one examination changed.

Making Up Incompletes from the Fall Semester

If you received a grade of I (Incomplete) for the Fall Semester, it is your responsibility to meet with your professor and make arrangements to complete the unfinished work as soon as possible. All incomplete work must be completed and a grade change submitted to the Office of Undergraduate Studies *no later than March 25, 2005*. Any "I" not made up by this date will be converted to a grade of "F." Any request for an extension must be submitted well in advance for review by the Dean's Committee. A request for extension should be submitted to Dean Robinson in Sears 357 and must be accompanied by a supporting note from the professor in the course involved.

University Counseling Services
2004 - 2005 Groups

The following groups and programs are being offered by UCS and CBH for the 2004-2005 academic year. If you are interested in a group or program being presented on campus, please review the program descriptions on-line at <http://www.cwru.edu/stuaff/ucs/groups.html> and then contact the Outreach Coordinator at william.hale@case.edu.

- Managing Stress Through Meditation
- Students of Color Support Group
- Making Peace with Food
- Women's Survivor Group
- Support Group for Recovering Students
- S.M.A.R.T. Recovery
- Bouncing Back
- A.A. Meetings
- Global Nomads

National Survey on Student Engagement (NSSE)

Watch your E-Mail

YOU OPINION MATTERS!!! LET YOUR VOICE BE HEARD!!!

Case Western Reserve University participates in a national survey that attempts to assess student success, student satisfaction, student engagement, student learning, and "best practices," through surveys administered to first year students and seniors. This national assessment allows Case not only to determine how we are doing, but also to compare how we are doing compared to our peer institutions. Your participation is essential. Many Case initiatives have been created, changed, and/or discontinued on the basis of what we learned from this and other institutional surveys. **The "administration" DOES care about what you think and IS LISTENING!**

You will be receiving email from Dean Robinson within the next week about participating in this survey. Please take the time to complete the survey.

"The National Survey of Student Engagement(NSSE) is designed to obtain, on an annual basis, information from scores of colleges and universities nationwide about student participation in programs and activities that institutions provide for their learning and personal development. The results will provide an estimate of how undergraduates spend their time and what they gain from attending college. Survey items on The College Student Report represent empirically confirmed "good practices" in undergraduate education. That is, they reflect behaviors by students and institutions that are associated with desired outcomes of college.

Institutions will use their data to identify aspects of the undergraduate experience inside and outside the classroom that can be improved through changes in policies and practices more consistent with good practices in undergraduate education. This information is also intended for use by prospective college students, their parents, college counselors, academic advisers, institutional research officers, and researchers in learning more about how students spend their time at different colleges and universities and what they gain from their experiences."

(From the National Survey on Student Engagement website at http://www.indiana.edu/~nsse/html/quick_facts.htm)

Sport Support

Yes, we had a few challenges to overcome in the fall with our sports facilities, but it doesn't mean that sports don't happen here! I hope to see you at an upcoming Spartan event in the near future. These are your friends and this is your University. Show some Case Pride!

Check out the winter varsity athletic events (<http://www.case.edu/athletics/varsity/winter/>) and cheer on your fellow Spartans!



3rd Annual Faculty/Staff v. Student Basketball
Friday, February 25th, 5:30 p.m.
Veale Athletic Center

Save the Date! Don't miss out on this great annual event. Watch your email for further details coming soon!!

Electrical Engineering & Computer Science Open House
11:00 a.m. - 1:00 p.m. on February 4th
Olin 408

- Meet and greet with EECS faculty, staff and students.
- Find out about the academic programs, research and opportunities available.
- Learn which of the EECS department majors might be right for you!
- Meet some great people and get your questions answered and have some FREE LUNCH!

More
Exploration

Watch for emails, flyers, and information from your LAs about more upcoming academic information sessions. Don't miss out on opportunities to learn more about academic majors, minors, programs and opportunities. Making connections with people, experiences, and opportunities is the best way to make well informed decisions about your collegiate experience. As always, I am here to answer any questions that you might have,

Mardi Gras Celebration
 Tuesday, February 8th
 Thwing Center Atrium

Food provided by Fat Fish Blue. Live Zydeco Music. BEADS!!

CHECK IT OUT!!

CSI: Leadership
 (Case Students Involved in Leadership)

Saturday, February 12, 2005
 1:00 - 5:15 p.m.
 (Dinner to follow for all delegates)
 Thwing Center

The conference will include a variety of sessions and topics focused on developing and enhancing leadership skills. Presenters will include faculty, students, and staff from a variety of campus offices. You can find out more about the Conference and register to attend by going to the following web page (<http://greeklife.case.edu/leadershipconference.html>) after January 4th.

Anticipated outcomes include:

- Networking with other leaders
- Hands-on training in areas of organizational development
- Strengthening leadership skills
- Self-awareness building

Questions about this leadership opportunity should be directed to the Office of Student Activities, 368-2679.

Spring Snowball 2004

The Annual Spring Snowball will be held on **Friday, February 18, 2005**. This year's event will also include a Fashion Show. Tickets will be **\$20.00/couple or \$15.00/single**.

Location: Marriott Cleveland Downtown (at Key Center)

Time: 9:00 p.m. - 1 a.m.

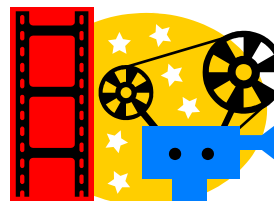
Watch for further information from your First Year Class Officers who are event sponsors.



STAY TUNED

- | | |
|-------------|--|
| Mar 17 | St. Patrick's Day Party
Thwing Center |
| Mar 18 & 19 | Orientation Leader Retreat
Off-Campus |
| Apr 1 | Unity Banquet |
| Apr 9 | International Dinner
Thwing Center |
| Apr 23 | Hudson Relays & Springfest |

Watch future Newsletters, The Observer, the ESS Weekly Calendar and other sources of information for further detailed information about the events listed above.



Movies

All movies listed below will be shown at Strosacker Auditorium. For more information, go to <http://films.cwru.edu/>

- | | |
|------|---|
| 2/4 | Ray
7:00 p.m., 10:00 p.m. |
| 2/5 | De-Lovely
7:00 p.m., 9:30 p.m. |
| 2/11 | Fight Club
7:00 p.m., 10:00 p.m. |
| 2/12 | Shaun of the Dead
7:00 p.m., 9:00 p.m. |
| 2/15 | Constantine - FREE SNEAK PREVIEW!
7:00 p.m. |
| 2/18 | The Incredibles
7:00 p.m., 9:30 p.m., 12:00 a.m. |
| 2/19 | Superman
7:00 p.m., 10:00 p.m. |
| 2/25 | Garden State
7:00 p.m., 9:30 p.m., 12:00 a.m. |
| 2/26 | Caddyshack
7:00 p.m., 9:30 p.m. |