

First Year Student Newsletter

Volume 9.3

January 2005

Produced by
Julie L. Amon, Assistant Dean for First Year Students
and the Office of Undergraduate Studies

Greetings from the Dean



Happy New Year! I hope your break has been relaxing and rejuvenating and that you are ready to start the spring semester with energy and enthusiasm.

It is at this point that I challenge you to do two things this semester - *reflect* and *explore*. First, I encourage you to reflect upon your experiences from the first semester. What did you do? Whom did you meet? What did you learn both inside your classes and outside of your classes? What experiences and activities did you participate in, and what did you gain from those experiences? And, what did you learn about yourself - your interests, your preferences, and even your assumptions? Upon reflection, are there things that you would like to change, to participate in, to learn, or to explore?

I challenge you to make the goal of the second semester not only be about solidifying your connection to Case, but also to explore more fully the opportunities that Case has to offer you. You will see a variety of opportunities presented to you for engagement in academic exploration, activities, organizations, research and other opportunities. The Choices Fair afforded you an opportunity to explore your academic interests and get connected to academic departments. The reason that first year students do not declare a major until the second semester is because Case wants you to make an informed decision about your academic interests. While many of you still have the same academic major aspirations that you had upon matriculation, many of you do not. This semester is a time for ALL students to fully test and explore their academic interests and opportunities. Look for occasions to explore your interests not only through the classroom, but also through connections made to upper class students, advisors, faculty, activities and other opportunities.

The extent to which you take this advice is entirely up to you. However, I can say from experience, that the students who engage in the classroom, form relationships with their faculty, ask questions of their advisors, and who avail themselves of the experiences and opportunities afforded by membership in an academic community, are the students who are most satisfied with their academic experience. As always, I and your first year advisors are here to help you in this process of exploration and reflection.

HAVE A GREAT SPRING SEMESTER!

Spring Semester Course Registration & Schedule Changes

- If you have pre-registered for any spring semester courses for which you failed to complete the prerequisites, be sure to make necessary adjustments to your schedule no later than the first week of courses. Students may be dropped from courses if they do not meet established course prerequisites. You can check course prerequisites by using the Searchable Schedule of Classes at <http://my.case.edu/mycase-jpdk/htdocs/studentsfirst/soc/catalog.html>.
- Only faculty can provide on-line or paper permits for permitted courses.
- Permission to enroll in a closed course can only be given by the instructor of that course.
- Schedule changes can be made through the end of the 2nd week of classes - **January 21, 2005**. Please check your schedule for accuracy before that time.

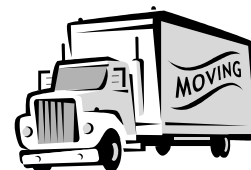
Academic Success Resources

Once again I'd like to remind you about all the resources that Case offers to support your academic success. Educational Services for Students (ESS) is the place to contact to enhance your own study strategies, learn new ones or find a tutor. ESS is the office that coordinates the Supplemental Instruction (SI) program, and that provides individual and Peer Tutoring (formerly called TUBA). The staff of ESS also works closely with the Learning Assistants (LA's) in your residence halls.

<http://ess.case.edu>

ESS Moves to New Location

Over the Winter Break, the Office of Educational Services for Students moved from the Kelvin Smith Library to Room 470 in the Sears Building around the corner from the Nord computer lounge and above the Office of Undergraduate Studies. Make sure you check out their new location and new resources as a way to kick off a successful spring semester. The ESS phone (368-5230) and website <http://ess.case.edu> remain the same.





Spring Semester, 2005 Academic Calendar - HIGHLIGHTS

Late Registration - Drop/add Ends	January 21
Deadline to declare a course as an Audit	January 21
Midterm Grades Due	March 7
Spring Break - No Classes - Offices Open	March 7 - 11
Deadline for removal of Fall 2004 Incompletes (I)	March 25
Deadline for Course Withdrawal (non-first year students)	March 25
Academic Advising for Summer and Fall 2005 Begins	March 28
Open Registration for Fall 2005 begins for undergraduates	April 11
Deadline to Submit Off-Campus Study Request for Summer Term	April 15
Registration begins for Summer 2005	April 18 (tentative)
Registration for first year students for Fall 2005 begins	April 19 (tentative)
Pass/No Pass Form Submission to Undergraduate Studies	April 21, 22 & 25
Deadline for Course Withdrawal (FIRST YEAR STUDENTS ONLY)	April 25
Last Day of Classes	April 25
Reading Days	April 26 & 27
Final Exams Begin	April 28
Final Exams End	May 5
Final Grades Due	May 7
Commencement	May 15

Proficiency Exams

Students who want to take a proficiency exam should contact the academic department as soon as possible. You should consider a proficiency exam if you took an AP course/exam but did not earn Case credit for it or if you feel that you have an exceptional amount of expertise in a certain field based on previous experiences. Students interested in taking a mathematics proficiency exam must pick up a permission form in the Office of Undergraduate Studies, Sears 357 prior to January 6th.

ENGR 145 - - Friday, January 7, 2005, 9:00 a.m. - 12:00 p.m. (Kent Hale Smith 119) *

MATH 121, 122, 125, 126, 223, 224 - - Friday, January 7, 2005, 1:00 - 4:00 PM (Yost 300) **

PHYS 115, 116, 121, 122, 221 - - Saturday, January 8, 2005, 9:00 a.m. - 12:00 p.m. (Rockefeller 301) ***

ENGR 131 - - Saturday, January 8, 2005, 1:00 - 4:00 p.m. (Olin 313)

CHEM 105, 106, 111 - - Tuesday, January 11, 2005, 6:00 - 9:00 p.m. (Clapp 201)

* Consent from ENGR 145 instructor (John Blackwell) required prior to exam. Email: jxb6@case.edu or call 216-368-6370.

** Request form signed by Dean Amon and Professor Butler (cxbl10@case.edu or call 216-368-2881) required.

*** Register for Physics Proficiency Exam in advance by contacting Professor Gary Chottiner. Email: gsc2@case.edu or call 216-368-4024.

Martin Luther King Jr. Day Essay Contest
Submission Deadline - January 13, 2005

To celebrate the life and contributions of Martin Luther King Jr., Case Western Reserve University announces an essay contest open to University faculty, staff and students. First, second and third place prizes will be awarded in all three categories - faculty, staff and students - with first prize awards of \$300, second prize awards of \$200 and third prize awards of \$100. The essay should be approximately 1,000 words in length and focus on the theme of Martin Luther King Jr. - The Man and His Commitment to Humanity.

Essays are due by 5 p.m. Thursday, January 13, 2005. Submit in person to the Office of Equal Opportunity and Diversity, 310 Adelbert Hall, or e-mail to Kathryn Hall at kathryn.hall@case.edu. The contest is sponsored by The Office of the President.

First place prize winners will read select portions of their essay at the **Martin Luther King Jr. Celebration on Thursday, January 20, at noon in Amasa Stone Chapel.**

Notice for Students Considering a BS Degree in Chemistry Register for CHEM 114 in Spring 2005

If you are considering a BS degree in Chemistry, make sure that you add CHEM 114 to your spring semester schedule. Even if you are as yet undecided between a BS and a BA, it would be a good course to take. Questions? Frederick Urbach - flu@case.edu or Doc Oc - ijo@case.edu.



Together, we can save a life

Red Cross Blood Drive

**Thursday, January 20th
10:00 a.m. - 5:00 p.m.
Thwing Ballroom**

It doesn't take much to save a life and make a difference. Hope to see you there

**Image vs. Reality:
Are We Who We Say We Are?**

**12th Annual Academic Happy Hour,
Friday, January 28th, 3:30 - 5:15 p.m.,
Thwing Ballroom**

Join **President Hundert**, fellow students, faculty, and staff for an **interactive dialogue** about our **image** and our **reality** at Case.

If you were making a Case commercial, what would you include?

At the Academic Happy Hour, the Ballroom is always packed, and the discussion is lively!

FREE Chipotle and beverages will be provided.

Get Experienced

**Thursday, January 27th
11:30 a.m. - 1:00 p.m.
Thwing Center**

Meet representatives connected with experiential education (including Americorps, Career Center, Junior Year Abroad, Practicum, SPUR - Summer Program in Undergraduate Research and SOURCE Undergraduate Research).

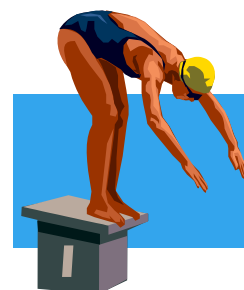
INCLUDES LUNCH -- MUST RSVP on eCompass!

Questions? Contact the Career Center in Sears 206, 368-4446.

Sport Support

Yes, we had a few challenges to overcome in the fall with our sports facilities, but it doesn't mean that sports don't happen here! I hope to see you at an upcoming Spartan event in the near future. These are your friends and this is your University. Show some Case Pride!

Check out the winter varsity athletic events (<http://www.case.edu/athletics/varsity/winter/>) and cheer on your fellow Spartans!



**RUSS
Residential Undergraduate Studies Satellite**

**The Resource Center at Wade
(Beyond the 24 Hour Quiet Study Area)
Mondays - Wednesdays
Appointments available at 5:30 p.m. and 6:00 p.m.
Walk-ins welcome 6:30 - 8:00 p.m.**

Have a quick question; need to withdraw from a class; wondering about how to get connected to academic opportunities? Come visit the Deans from the Office of Undergraduate Studies at RUSS, Mondays - Wednesday from 5:30 - 8:00 p.m..

Resources including GER/Core checklists, drop/add forms, Pre-Med and Pre-Law Handouts and additional handouts are available in the 24-Hour Study Area in the Resource Center at Wade.

Connect with Your First Year Advisor

Make sure to reconnect with your first year advisor early this semester. Let him/her know about any changes that you have made to your spring schedule that might deviate from your fall discussions. Talk to your advisor about your Fall 2004 grades and how you feel about them - happy, satisfied, less than thrilled, surprised?? Also let your advisor know about any changes to your intended major - - different major, another major, minor(s), or undecided about a major. And as always...ASK QUESTIONS!



Making Up Incompletes from the Fall Semester

If you received a grade of I (Incomplete) for the Fall Semester, it is your responsibility to meet with your professor and make arrangements to complete the unfinished work as soon as possible. All incomplete work must be completed and a grade change submitted to the Office of Undergraduate Studies *no later than March 25, 2005*. Any "I" not made up by this date will be converted to a grade of "F." Any request for an extension must be submitted well in advance for review by the Dean's Committee. A request for extension should be submitted to Dean Robinson in Sears 357 and must be accompanied by a supporting note from the professor in the course involved.

Course Repetition (Handbook pp. 89-90)

If you are dissatisfied with a grade that you received, you may choose to repeat that course, however, you must notify the Office of Undergraduate Studies of your intention to do so by completing the **Course Repetition Form**. Upon completion of the repeated course at Case for an evaluative grade (A, B, C, D or F), the first grade will be replaced with the designation RPT and will no longer be computed in either the semester or cumulative GPA's. The Course Repeat Option may be exercised subject to the following conditions:

1. The repetition must occur *within one calendar year* of the previous enrollment or, for courses that are not offered annually, in the next semester in which the course is offered.
2. A student may not use the Pass/No Pass option in a course that is being repeated.
3. An academic action that occurred under the earlier grade is neither reversed nor removed from the record as a result of a change in the semester or cumulative averages that results from the repetition of one or more courses.

The only grade posted and averaged for a course on the student's record will be that resulting from the most recently completed enrollment in the course.

Scholarship Retention (Handbook p. 93)

At the end of each academic year (**June**), the records of all scholarship recipients will be reviewed. To have a scholarship renewed for the following academic year, a recipient is expected to satisfy two requirements: a minimum number of hours earned after enrolling at Case and a minimum cumulative GPA. In order to retain your Trustee's, President's or Provost's Scholarship you must have earned at least 24 hours with a cumulative scholarship GPA* of 2.50.

Scholarship Retention cont... (Handbook p. 93)

* The Scholarship GPA includes all courses posted for grades including F grades earned through the First Year Student Grading Policy and both grades earned through the use of the Repeat Option. Therefore, the statement 'I'll just take an F because freshman forgiveness saves me' represents a very ill-advised strategy. If you are facing a possible D or F in a course, it makes more sense to withdraw than it does to risk the impact on your GPA and the possible loss of your scholarship.

Spring Final Exams Schedules (Handbook pp. 84-85)

Believe it or not, it's not too early to review your spring final exam schedule. It is important that you consult your course syllabi and the on-line final exam schedule. Final exams dates *will not* be altered to accommodate travel plans. You can find the Final Exam Schedule on the Registrar's website at <http://www.cwru.edu/provost/registrar/exams/exam042.htm>. Make sure you confirm your exam schedule and make your travel, work or school plans accordingly.

4/25	Last Day of Classes
4/26 - 4/27	Reading Days
4/28	Final Exams Begin
5/5	Final Exams End

NOTE: No student will be required to take more than two final examinations on a single day. A student who has three final examinations scheduled for a single day should go to the Office of Undergraduate Studies and obtain the assistance of the Dean in arranging to take one of those examinations on an alternative day during the final examination period. Similarly, a student with conflicting examinations should seek the assistance of the Dean of Undergraduate Studies in arranging to have the time of one examination changed.

AP, IB and Transfer Credit Posted

Recently, I have been getting some questions about AP, IB and transfer credit. At this point, the Office of Undergraduate Studies has posted all credit that we have received. It is incumbent upon you to check your DPR and verify that the credit that you think you have earned has been posted. You can access your DPR through the following website: <http://www.cwru.edu/provost/ugstudies/DPR.htm>. If you do not see the credit there, please contact me ASAP.

NOTE: Some AP credit is *provisional** or dependent upon completion of a specified Case course. This applies to students who earned a 3 on the AP Calculus BC exam and also for students who earned a 4 or 5 on the AP Physics B or C (Mechanical) exams. Students who have earned the required Case course should send an email to me asking that your AP credit be posted. Please refer to your *FYI Guide* for specific AP and IB Course Equivalencies.



Summer School and the Off-Campus Study Request Process (Handbook p. 86)

Many of you have asked questions about taking summer classes at institutions other than Case. Can you do this? Yes. As with most processes at a university, there are policies, procedures and paperwork. Read the information in your handbook and then if you are still interested, come in to Sears 357 to pick up the **Off-Campus Study Request Form - available in early February**. In order to complete the Off-Campus Study Request, you must collect course descriptions for the course(s) that you are interested in taking. The course(s) will be evaluated by Ms. Claudia Anderson, Director of Advising and Evaluation of Off-Campus Study.

The deadline for submission of the request is **April 15**. Most universities and colleges begin to post summer schedules in February and March, and you do need to wait to submit the form until you have actual course offerings to review. However, the sooner you complete the form, the sooner you will be notified if the course that you are interested in taking has been approved.

For those of you who live in Cuyahoga County, please pay special attention to the specific residency restrictions listed in the *Handbook*.

Don't forget that Case also offers summer courses and the tuition is $\frac{1}{2}$ price for these courses. You can check out our offering in the Schedule of Classes at <http://www.cwru.edu/courses/catalog/>.

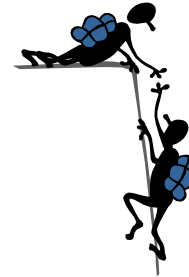
Overloads (Handbook, p. 85)

The Case faculty determined a normal course load for full time students to be between 14 and 18 credit hours in the fall and spring semesters. Any student wishing to enroll in more than 18 hours must seek permission from a Dean in the Office of Undergraduate Studies. Additionally, students must have a **minimum 3.20 cumulative grade point average (GPA)** and a compelling reason as to why s/he wants to enroll in more than 18 credit hours.

If you earned at least a 3.20 GPA this fall, you can come into the Office of Undergraduate Studies once you return in January to talk to a Dean about the possibility of overloading your spring semester schedule. These discussions are handled on a *walk-in basis*. Walk-ins will be available in our main office in Sears 357 between 8:30 a.m. and 5:00 p.m. Monday - Friday and in the RUSS office Monday - Wednesday 5:30 - 8:00 p.m.

Thinking about Becoming an Orientation Leader?

Applications are now available on line at www.case.edu/orientation. Orientation Leader benefits include: a stipend for each Summer Session, learning to work in a team, networking opportunities, making a positive difference on campus, and resume building opportunities! **The deadline to apply is Friday, February 11, 2005**. Please contact Kate Police at cjp18@case.edu or 216.368.8827 with any questions.



Looking for Another Course to Add to Your Spring Semester Schedule?

Check out MPHP 313 Peer Health: An Advanced Course in Health Education, Communication, and Advocacy

This 3-credit course offers the Case community the opportunity to work with the public health community on issues of health and social justice for adolescents and young adults. The course will meet for 2 hours once a week (Wednesdays, 4 to 6 pm), with 4 hour workshop sessions once a month (2nd Wednesday, 4 to 8 pm). Lead by Dr. Scott Frank, family physician, Director of the Division of Public Health at the Case School of Medicine, and Director of the Department of Health for the City of Shaker Heights, the course will guide students to a greater understanding of how to influence the well-being of peers and patients through generation of strategic health promotion campaigns focusing on this age cohort. Both theoretical foundations and pragmatic aspects of health promotion and prevention marketing will be emphasized.



As a Case student you have FREE access to many University Circle Institutions. Have you visited yet? If not, make the time to explore the incredible resources, collections, and opportunities right outside your door.

http://www.universitycircle.org/uc_about.asp

International Students' Welcome/Welcome Back Party
Friday, January 14th
7:00 p.m. Nord Hall Atrium

This is a long-standing tradition among international students at Case Western Reserve University. The Office of International Student Services always celebrate each semester's beginning with a Welcome/Welcome Back Party. We look forward to seeing everybody at the Spring Semester Welcome/Welcome Back Party. For those of you who like to plan ahead, the Spring party will be held on the evening of Friday, January 14th, 2005.



CSI: Leadership
(Case Students Involved in Leadership)

Saturday, February 12, 2005
1:00 - 5:15 p.m.
(Dinner to follow for all delegates)
Thwing Center

The conference will include a variety of sessions and topics focused on developing and enhancing leadership skills. Presenters will include faculty, students, and staff from a variety of campus offices. You can find out more about the Conference and register to attend by going to the following web page (<http://greeklife.case.edu/leadershipconference.html>) after January 4th.

Anticipated outcomes include:

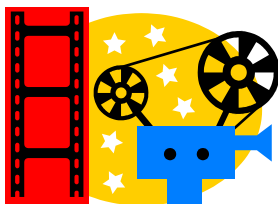
- Networking with other leaders
- Hands-on training in areas of organizational development
- Strengthening leadership skills
- Self-awareness building

Questions about this leadership opportunity should be directed to the Office of Student Activities, 368-2679.



- | | |
|------------------------|---|
| Feb 1 | Mo Rocca Returns
8:00 p.m., Location TBD |
| Feb 8 | Mardi Gras Party
Thwing Center |
| Feb 12 | Leadership Conference |
| Feb 19 | Annual Spring Snowball Party
9 p.m. - 1:00 a.m., Marriott Hotel |
| Feb 19 & 20 | Spring SatCo |
| Feb 26 & 27 | Spring SatCo |
| Mar 17 | St. Patrick's Day Party
Thwing Center |
| Mar 18 & 19 | Orientation Leader Retreat
Off-Campus |
| Apr 1 | Unity Banquet |
| Apr 9 | International Dinner
Thwing Center |
| Apr 23 | Hudson Relays & Springfest |

Watch future Newsletters, The Observer, the ESS Weekly Calendar and other sources of information for further detailed information about the events listed above.



Movies

All movies listed below will be shown at Strosacker Auditorium.
For more information, go to <http://films.cwru.edu/>

- 1/14 **30th Annual Science Fiction Marathon**
Tickets on sale 1/14 at 6 p.m. in Strosacker.
- 1/15 **30th Annual Science Fiction Marathon**
Details: <http://films.cwru.edu/sfmarathon30/>
- 1/21 **Saw**
7:00 p.m., 9:30 p.m., 12:00 a.m.
- 1/22 **Psycho (1960)**
7:00 p.m., 9:30 p.m.
- 1/28 **The Fifth Element**
7:00 p.m., 9:30 p.m., 12:00 a.m.
- 1/29 **Local Filmmaker's Night**
Stay tuned for details.
- 2/4 **Ray**
7:00 p.m., 10:00 p.m.
- 2/5 **De-Lovely**
7:00 p.m., 9:30 p.m.

Seminars, Talks, Colloquia, Performances

1/14 **Chemistry Dissertation Defense - ETA6**
Arenecaromium Tricarbonyl Complexes: Conformational Analysis, Stereocontrol in Nucleophilic Addition Reactions and Applications in Organic Synthesis - Harinandini Paramahamsan; Location: Millis 123; 1:00 p.m.; Contact: Jason Hatton, jrh33@case.edu

1/14 **History Dissertation Defense - Open Penitentiaries: The Rise of the Institution of Homelessness in Cleveland, Ohio - Daniel Kerr**; Location: Nord 610; 1:00 p.m.; Contact: Matthew Lewis, mdl18@case.edu

1/20 **Notes on the Concept of Economic Hegemony: Material Insecurity and Working-Class Political Expression in the New South - Lisa Gayle Hazirjian, Visiting Assistant Professor of History**; Location: Baker-Nord Center, Clark Hall 206; Refreshments available at 4:00 p.m., talk, 4:30 - 6:00 p.m.; Contact: Laura Sielen, lks18@case.edu

1/21 **The Father of the Blues in American History: W. C. Handy (1873-1958) - Richard Crawford (University of Michigan)**; Location: Clark Hall Room 206, 4:00 p.m.; Contact: Case Department of Music.

1/22 **Music of the Valois by Fortune's Wheel (Boston)**; Location: Harkness Chapel, 7:30 p.m.; Contact: Case Department of Music.

Seminars, Talks, Colloquia, Performances cont...

1/24 **Covering Cleveland: An Editor's Perspective by Doug Clifton, Editor, Cleveland Plain Dealer**; Location: Clark Hall Room 206; 12:00 p.m.; Contact: 368-6996 or 368-4837.

1/26 **Rethinking the Problem of Edith Stein: Jew and Catholic Saint by Zev Garber**; Clark Hall 206, 4:30 - 6:00 p.m.; Contact Laura Sielen, lks18@case.edu

Campus Events - University Program Board (UPB) Calendar
- <http://home.cwru.edu/upb/>

Watch your email and look for campus flyers for detailed information about UPB events in the spring semester.

Best Wishes for a
Great Spring Semester!