

First Year Student Newsletter

Volume 8.4

January/February 2004

Produced by
Julie L. Amon, Assistant Dean for First Year Students
and the Office of Undergraduate Studies

Greetings from the Dean

EXPLORATION

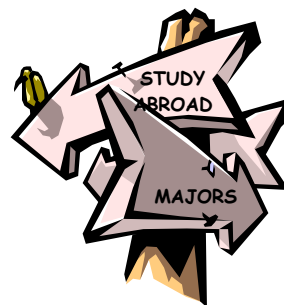
First of all, welcome back from your break and welcome to your second semester. I hope your break was relaxing and rejuvenating and that you have started the spring semester with energy and enthusiasm.

It is at this point that I challenge you to do two things this semester - *reflect* and *explore*. First, I encourage you to reflect upon your experiences from the first semester. What did you do? Whom did you meet? What did you learn both inside your classes and outside of your classes? What experiences and activities did you participate in, and what did you gain from those experiences? And, what did you learn about yourself - your interests, your preferences, and even your assumptions? Upon reflection, are there things that you would like to change, to participate in, to learn, or to explore?

I challenge you to make the goal of the second semester be not only about solidifying your connection to Case, but also to explore more fully the opportunities that Case has to offer you. You will see a variety of opportunities presented to you for engagement in activities, organizations, research and other opportunities. The Choices Fair, which is a mandatory first year student event, is all about exploring your academic interests. The reason that first year students do not declare a major until the second semester is because Case wants you to make an informed decision about your academic interests. While many of you still have the same academic major aspirations that you had upon matriculation, many of you do not. This semester is a time for ALL students to fully test and explore their academic interests and opportunities. Look for occasions to explore your interests not only through the classroom, but also through connections made to upper class students, advisers, faculty, activities and other opportunities.

The extent to which you take this advice is entirely up to you. However, I can say from experience, that the students who engage in the classroom, form relationships with their faculty, ask questions of their advisers, and who avail themselves of the experiences and opportunities afforded by membership in an academic community, are the students who are most satisfied with their academic experience. As always, I and your first year advisers are here to help you in this process of exploration and reflection.

HAVE A GREAT SEMESTER!



Choices 2004: Exploring Academic & Experiential Opportunities Fair

Thursday, February 12th, 2004
11:30 a.m. - 1:00 p.m.
Thwing Ballroom

** MANDATORY FIRST YEAR STUDENT EVENT **

- Learn about Case major, minor, and sequence offerings
- Talk to faculty and student representatives from academic departments
- Find out about opportunities to participate in department sponsored events
- Gather information to make an informed decision about declaring a major or minor
- Visit with student organization representatives at the Student Organization Expo and find out about how to get involved
- Learn about opportunities to participate in Junior Year Abroad, Co-Op, research and more ...

HAVE A FREE LUNCH ON UNDERGRADUATE STUDIES!!!

Sponsored by the Office of Undergraduate Studies and the Career Center



Spring Semester, 2004 Academic Calendar - HIGHLIGHTS

| | |
|---|----------------------|
| Late Registration - Drop/add Ends | January 23 |
| Deadline to declare a course as an Audit | January 23 |
| Midterm Grades Due | March 8 |
| Spring Break - No Classes - Offices Open | March 8 - 12 |
| Deadline for removal of Fall 2003 Incompletes (I) | March 26 |
| Deadline for Course Withdrawal (non-first year students) | March 26 |
| Academic Advising for Summer and Fall 2004 Begins | March 29 |
| Open Registration for Fall 2004 begins for undergraduates | April 12 |
| Deadline to Submit Off-Campus Study Request for Summer Term | April 15 |
| Registration begins for Summer 2004 | April 19 |
| Registration for first year students for Fall 2004 begins | April 20 (tentative) |
| Pass/No Pass Form Submission to Undergraduate Studies | April 22, 23 & 26 |
| Deadline for Course Withdrawal (FIRST YEAR STUDENTS ONLY) | April 26 |
| Last Day of Classes | April 26 |
| Reading Days | April 27 & 28 |
| Final Exams Begin | April 29 |
| Final Exams End | May 6 |
| Final Grades Due | May 8 |
| Commencement | May 16 |

Chipotle and Conversation

**11th Annual Academic Happy Hour,
Friday, February 6, 3:30 - 5:00 p.m.,
Thwing Ballroom**

Join **President Hundert**, fellow students, faculty, and staff for an **interactive dialogue** about **experiential learning at Case**.

Discussion topics include:

- Describing how Case defines experiential learning
- Examining how experiential learning is currently used within our various academic areas
- Sharing our experiences as students and faculty
- Thinking about how students are assessed in classrooms using experiential learning

At the Academic Happy Hour, the Ballroom is always packed, and the discussion is lively!

Burritos and tacos from Chipotle and beverages will be provided.

2nd Annual Faculty/Staff v. Student Basketball Game

Do the Profs 'Got Game' or are they simply full of 'Hoop Dreams'?

Come find out as Case Students take on Case Faculty and Staff!

| | |
|---------------|---|
| Date? | Thursday, February 19, 2004 |
| Where? | Horsburgh Gymnasium at the Veale Center |
| When? | 5:30 p.m. |

Come out and support your fellow students as they take on the faculty and staff!

This is also a charitable event with all proceeds going to the summer youth basketball program.

Interested in playing? Contact Ben Langhorst (bx132@case.edu)





Spring Snowball 2004

The Annual Spring Snowball will be held on **Saturday, February 21, 2004**. This year's event will also include a Fashion Show. Tickets will be **\$15.00/couple or \$10.00/single**.

Location: Thwing Ballroom

Time: 9:00 p.m. - 1 a.m.

Proceeds from the event will go to the Domestic Violence Center of Cleveland (Templum House). Watch for further information from your First Year Class Officers who are event sponsors.

Student Leadership Conference

Saturday, February 7, 2004
Start Time - 10:00 a.m.
Thwing Student Center

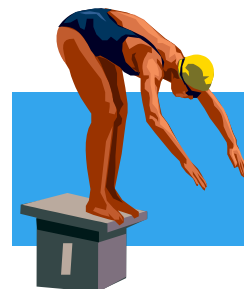
The Conference starts at 10 am and will include three sessions and lunch. Sessions being offered include How to Promote a Program, Ethical Leadership, Conflict Management, Risk Management for Student Organizations, How to Manage Organizational Change, LeaderShape, Networking, Organization Structure and Leadership, Stress Management for Student Leaders, Lord of the Rings and Leadership, Leadership and the Myers Briggs, and a session on Orientation to name just a few of the programs being offered. Presenters will include faculty, students, and staff from Greek Life, Thwing Center, the Career Center, the Women's Center, Residence Life, Student Community Service, and Multicultural Affairs. You can find out more about the Conference and register to attend by going to the Greek Life web page (<http://greeklife.case.edu/>).

The Student Leadership Committee and the Office of Greek Life are sponsoring the Spring Student Leadership Conference.

Sport Support

So, where were you last Sunday afternoon? I was watching an AMAZING basketball game in which our Lady Spartans beat the women from the University of Rochester in a double overtime nail biter-of-a-game!! I hope to see you at an upcoming Spartan event in the near future. These are your friends and this is your University. Show some Case Pride!

Check out the winter varsity athletic events (<http://www.cwru.edu/athletics/varsity/>) and cheer on your fellow Spartans!



RUSS Residential Undergraduate Studies Satellite

The Resource Center at Wade
Mondays - Wednesdays
Appointments available at 5:30 p.m. and 6:00 p.m.
Walk-ins welcome 6:30 - 8:00 p.m.

Have a quick question; need to withdraw from a class; wondering about how to get connected to academic opportunities? Come visit the Deans from the Office of Undergraduate Studies at RUSS, Mondays - Wednesday from 5:30 - 8:00 p.m..

Resources including GER/Core checklists, drop/add forms, Pre-Med and Pre-Law Handouts and additional handouts are available in the 24-Hour Study Area in the Resource Center at Wade.

Connect with Your First Year Adviser

Make sure to reconnect with your first year adviser early this semester. Let him/her know about any changes that you have made to your spring schedule that might deviate from your fall discussions. Talk to your adviser about your Fall 2003 grades and how you feel about them - happy, satisfied, less than thrilled, surprised?? Also let your adviser know about any changes to your intended major - - different major, another major, minor(s), or undecided about a major. And as always...ASK QUESTIONS!



Making Up Incompletes from the Fall Semester

If you received a grade of I (Incomplete) for the Fall Semester, it is your responsibility to meet with your professor and make arrangements to complete the unfinished work as soon as possible. All incomplete work must be completed and a grade change submitted to the Office of Undergraduate Studies *no later than March 26, 2004*. Any "I" not made up by this date will be converted to a grade of "F." Any request for an extension must be submitted well in advance for review by the Dean's Committee. A request for extension should be submitted to Dean Robinson in Sears 357 and must be accompanied by a supporting note from the professor in the course involved.

Course Repetition

(2003 - 2004 Handbook for Undergraduate Students, p. 70)

If you are dissatisfied with a grade that you received, you may choose to repeat that course, however, you must notify the Office of Undergraduate Studies of your intention to do so by completing the Course Repetition Form. Upon completion of the repeated course at Case for an evaluative grade (A, B, C, D or F), the first grade will be replaced with the designation RPT and will no longer be computed in either the semester or cumulative GPA's. The Course Repeat Option may be exercised subject to the following conditions:

1. The repetition must occur within one calendar year of the previous enrollment or, for courses that are not offered annually, in the next semester in which the course is offered.
2. A student may not use the Pass/No Pass option in a course that is being repeated.
3. An academic action that occurred under the earlier grade is neither reversed nor removed from the record as a result of a change in the semester or cumulative averages that results from the repetition of one or more courses.

The only grade posted and averaged for a course on the student's record will be that resulting from the most recently completed enrollment in the course.

Academic Success Resources

Once again I'd like to remind you about all the resources that Case offers to support your academic success. Educational Support Services (ESS) is the place to contact to enhance your own study strategies, learn new ones or find a tutor. ESS is the office that coordinates the Supplemental Instruction (SI) program, and that provides individual and TUBA tutoring. The staff of ESS also works closely with the Learning Assistants (LA's) in your residence halls.

<http://ess.case.edu>

Spring Final Exams Schedules (Handbook p. 67)

Believe it or not, it's not too early to review your spring final exam schedule. It is important that you consult your syllabus and the on-line final exam schedule. Final exams dates *will not* be altered to accommodate travel plans. You can find the Final Exam Schedule on the Registrar's website at <http://www.cwru.edu/provost/registrar/exams/exam042.htm>. Make sure you confirm your exam schedule and make your travel, work or school plans accordingly.

| | |
|-------------|---------------------|
| 4/26 | Last Day of Classes |
| 4/27 - 4/28 | Reading Days |
| 4/29 | Final Exams Begin |
| 5/6 | Final Exams End |

NOTE: No student will be required to take more than two final examinations on a single day. A student who has three final examinations scheduled for a single day should go to the Office of Undergraduate Studies and obtain the assistance of the Dean in arranging to take one of those examinations on an alternative day during the final examination period. Similarly, a student with conflicting examinations should seek the assistance of the Dean of Undergraduate Studies in arranging to have the time of one examination changed.

AP, IB and Transfer Credit Posted

Recently, I have been getting some questions about AP, IB and transfer credit. At this point, we have posted all credit that we have received. It is incumbent upon you to check your DPR and verify that the credit that you think you have earned has been posted. You can access your DPR through the following website: <http://www.cwru.edu/provost/ugstudies/DPR.htm>. If you do not see the credit there, please contact me ASAP.

NOTE: Some AP credit is *provisional** or dependent upon completion of a specified Case course. This applies to students who earned a 3 on the AP Calculus BC exam and also for students who earned a 4 or 5 on the AP Physics B or C (Mechanical) exams. Students who have earned the required Case course should send an email to me asking that your AP credit be posted. Please refer to your *FYI Guide* for specific AP and IB Course Equivalencies.

Summer School and the Off-Campus Study Request Process

(2003-2004 Handbook for Undergraduate Students, pp. 61-62)

Many of you have asked questions about taking summer classes at institutions other than Case. Can you do this? Yes. As with most processes at a university, there are policies, procedures and paperwork. Read the information in your handbook and then if you are still interested, come in to Sears 357 to pick up the **Off-Campus Study Request Form** as soon as possible. In order to complete the Off-Campus Study Request, you must collect course descriptions for the course(s) that you are interested in taking. The course(s) will be evaluated by Ms. Claudia Anderson, Director of Advising and Evaluation of Off Campus Study.

The deadline for submission of the request is **April 15**. Most universities and colleges begin to post summer schedules in February and March, and you do need to wait to submit the form until you have actual course offerings to review. However, the sooner you complete the form, the sooner you will be notified if the course that you are interested in taking has been approved.

For those of you who live in Cuyahoga County, please pay special attention to the specific residency restrictions listed in the *Handbook*.

Don't forget that Case also offers summer courses and the tuition is $\frac{1}{2}$ price for these courses. You can check out our offering in the Schedule of Classes at <http://www.cwru.edu/courses/catalog/>.

STAY TUNED

- For email updates about Choices Fair and Departmental Follow-Up Activities
- For further information about Faculty/Staff vs. Student Basketball, Snowball, and Point Blue.
- For additional Engineering Week - February 22 - 26 - activities and updates
- For information about The Spot Grand Re-Opening Celebration Coming Soon



Point Blue

"The party scene at Case is so lame." Sound familiar? Well, the Second Year Class Officers heard the gripe and decided to do something about it. And no, they are not herding you onto the RTA to go downtown. They opened a club right here on campus! So, check it out...

When: Thursday, February 19th (after the Faculty/Staff v. Student Basketball Game

10:00 p.m. - 2:00 a.m.

Where: Carlton Commons & the Rough Rider Room

Transportation: Greenies Running til 2:30 a.m.

Entertainment: DJ Dongo

Cover Charge: NONE

Refreshments: Food and drinks (75 cent drinks) in the Rough Rider Room

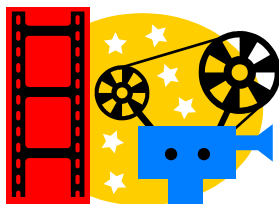
So, dress to impress and go and get your club on! Questions? Talk to the Second Year Class Officers - Ryan Novince, Pavan Thangudu, Elizabeth Kiracofe, and Peter Lin.



February 22 - 26

<http://www.engineering.case.edu/eweek/>

Check it out!



Movies

All movies listed below will be shown at Strosacker Auditorium.
For more information, go to <http://films.cwru.edu/>

- 1/30 **Once Upon a Time in Mexico**
7:00 p.m., 9:30 p.m., 12:00 a.m.
- 1/31 **Once Upon a Time in the West**
7:00 p.m., 10:30 p.m.
- 2/6 **Matrix Revolutions**
7:00 p.m., 10:00 p.m.
- 2/7 **Bram Stoker's Dracula**
7:00 p.m., 10:00 p.m.
- 2/13 **Freddy vs. Jason**
7:00 p.m., 9:30 p.m., 12:00 a.m.
- 2/14 **Bringing Up Baby**
7:00 p.m., 9:30 p.m.
- 2/20 **Kill Bill: Volume 1**
7:00 p.m., 9:30 p.m., 12:00 a.m.
- 2/21 **Seven Samurai**
7:00 p.m.
- 2/27 **Master and Commander: The Far Side of the World**
7:00 p.m., 10:00 p.m.
- 2/28 **Scarface**
7:00 p.m., 10:30 p.m.

Seminars, Talks, Colloquia, Performances

- 1/29 **Nanocrystals: The Building Blocks of Nanoscience - Dr. Stephen O'Brien**; Location: Clapp Hall, 108; 4:30 - 5:30 p.m.; Contact: Pat Eland, pme2@case.edu, 368-3622.
- 2/1 **Contributions of Brain Theory to Philosophy and Psychiatry - Walter J. Freeman, M.D.**; Location: Biomedical Research Building; 7:30 - 9:00 p.m.; Contact: Laura Hengehold, leh7@case.edu, 368-2633.
- 2/3 **Sailors or Floaters: Figuring Out the Moves of a Fossil - Dr. Joe Hannibal**; Location: Kelvin Smith Library, Dampeer Room; 11:30 a.m. - 1:00 p.m.; Contact: Cynthia Beall, cmb2@case.edu, 368-2277.
- 2/4 **Kurt Vonnegut**; Location: Severance Hall; 4:00 p.m.; Contact: Severance Hall Box Office, Tickets for Students \$5, 231-1111.
- 2/9 **Cartilage Repair: Seven Years of Learning - Dr. Luis Solchaga**; Location: Millis Science Center, Room 123; 4:00 - 5:00 p.m.; Contact: Debbie Bush, debra.bush@case.edu, 368-3562.

Seminars, Talks, Colloquia, Performances cont...

- 2/4 **Multicultural Series: The Edge of Each Other's Battles**; Location: Thwing Center, Spartan Room; 6:00 - 7:30 p.m.; Contact: Ginnette Boyarko, geb9@case.edu, 368-0985.
- 2/6 **Presidential Nomination Politics**; Location: Thwing Center, 1914 Lounge; 4:30 - 6:00 p.m.; Contact: Joe White, jxw87@case.edu, 368-2426. For more information: <http://www.cwru.edu/artsci/cps/>
- 2/10 **Case University Circle Orchestra**; Location: Thwing Ballroom; 8:00 p.m.; Contact: Music Department, 368-2400.
- 2/11 **Federalism and Environmental Policy - Jonathan Adler**; Location: School of Law, Gund Hall; 4:45 - 5:45 p.m.; Contact: Alice Simon, ams45@case.edu, 368-3304.
- 2/17 **Whale Rider**; Location: Thwing Center, Center for Women (Room 309); 8:00 - 10:30 p.m.; Contact: Ginnette Boyarko, geb9@case.edu, 368-0985.
- 2/17 **Making It Matter: Writing With and About Passion - Susan Orlean - The Susie Gharib Distinguished Lectureship in Journalism**; Location: Clark Hall, Room 206; 12:00 - 1:30 p.m.; Contact: Fredrica Ward, faf2@case.edu, 368-2340.
-
- Campus Events - University Program Board (UPB) Calendar**
- <http://home.cwru.edu/upb/>
-
- 1/29 **Joe & Jive Coffeehouse Night - Doug Wood**; Location: Rough Rider Room; 9:30 p.m.
- 2/4 **Spot Night - DJ Spinoff**; Location: The Spot; 9:30 p.m.
- 2/8 **Ski Trip**
- 2/11 **Spot Night - Heights & Bow 'n' Arrow**; Location: The Spot; 9:30 p.m.
- 2/12 **Joe & Jive Coffeehouse Night - Valentine's Day Spectacular**; Location: Rough Rider Room; 9:30 p.m.
- 2/18 **Spot Night - Every Other Week & Dead By July**; Location: The Spot; 9:30 p.m.
- 2/19 **Culture Fusion Tickets On Sale**; Location: Thwing Atrium; 12:00 - 1:00 p.m.
- 2/21 **Videogame Tournament**; Check with UPB for details.
- 2/21 **Snowball**; Location: Thwing Ballroom; 9:00 p.m.
- 2/24 **Tuesday Night Comedians - Mike Birbiglia**; Location: The Spot; 9:30 p.m.
- 2/25 **Spot Night-Vanity Crash**; Location: The Spot; 9:30 p.m.
- 2/26 **Joe & Jive Coffeehouse Night-Blue Lunch**; Location: Rough Rider Room; 9:30 p.m.
- 2/27 - 2/29 **Trip to Chicago**