

Romexis 3D Image Volume Export Instructions



Click on the **Patients** icon in Romexis to select the volume you want to export.



After the **Demographics** screen appears, click on the 3D icon.



Click on the **View Image** button in the menu bar at the top of the screen and wait for the image to come up.



Always reset the image before exporting by clicking on the **Reset** icon shown.



Click on the **Export** icon shown to bring up the Export dialog box (shown below).

Explanation of Export Settings:

“Export File Type”

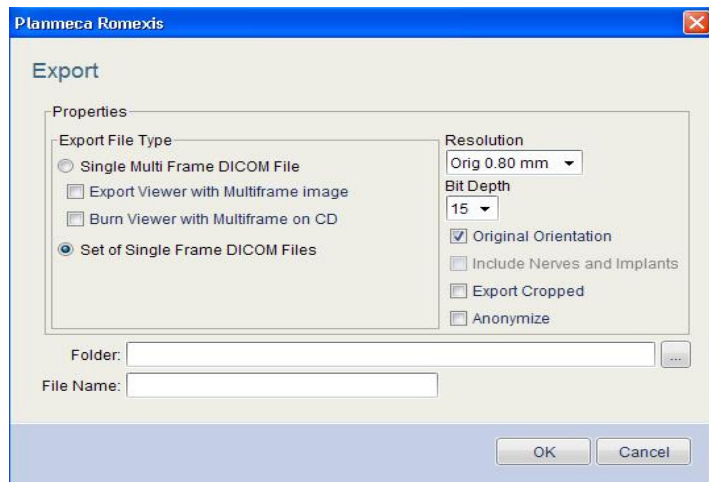
Single Multi Frame DICOM File:

The recommended option – this will export the 3D image volume as one DICOM file. When choosing this option, it is advisable to check the **Export Viewer with Multiframe image** box so a DICOM viewer program will be exported to the same directory as the patient’s volume file.

If there is burning hardware on the computer, choose the **Burn Viewer with Multiframe on CD** option to put a viewer and patient volume onto a CD.

Set of Single Frame DICOM Files:

This will export the 3D image volume as 512 single files where each represents one axial slice.



“Folder”

Select the location of where the files will be exported. It is best to create a new folder so all the files including the DICOM viewer is conveniently located in one place.

“File Name”

Name the 3D image volume with the patient’s name so it can be easily identified, then click on **OK**.

“Resolution”

The resolution to be used when exporting the 3D image volume can be selected from a drop-down menu which lists available voxel resolutions; if you do change the resolution, use the highest resolution your viewer software can handle. For example, some surgical planning softwares can only handle resolutions between 0.30mm and 0.50mm.

*NOTE: This option is grayed out [not available] if the **Original Orientation** box is checked.*

The **Bit Depth** can be changed to set the appropriate bit size which will allow the volume to be viewed in another imaging software.

Checking the **Original Orientation** box exports the 3D image volume in the same orientation in which the image was captured and displayed.

NOTE: The same result can be obtained from resetting the image before exporting it

Checking the **Include Nerve and Implants** box exports the 3D image volume with any nerve or implants that have been marked/placed in the image.

The **Export Cropped** box exports the 3D image volume exactly as it had been cropped to on the screen. For example if the ROI was only the third molar it will only export the third molar.

Checking the **Anonymize** box exports the 3D image volume without any patient information.

PLANMECA Romexis Viewer User Guide

Patient Name .dcm

Patient Selector (NOTE: The DICOM volume set must be located in the same folder as the viewer software.)



Mouse Scroll Wheel & Buttons In 2D plane views, scroll the mouse wheel or slide the scroll bar to change the slice location. With the right mouse button you can pan the image and rotate the image.

In 3D plane views, the mouse wheel will zoom in and out of the image and rotate the image.

Reset View

Reset View Resets all the views to original orientation and settings.



Zoom In/Out Use the mouse scroll wheel to adjust the view size.

Thickness

0.45 mm

Thickness Selection Selects different thicknesses for the plane views.



Angle Measurement Tool Left click and drag to create the base line, release to make an angle point, then click and drag to create an angle line. Release the mouse to show the angle between the two lines.



Measurement Tool Left click and drag to make a measurement line. Right click to end the measurement.



Slide Indicator Lines These lines refer to the locations on the other planes.



Plane Indicators Displays the 2D plane locations in the 3D view.



Plane Indicators On/Off Selector



Frontal Coronal View Selector



Rear Coronal View Selector



Axial View Foot End Selector



Axial View Head End Selector



Left Sagittal View Selector

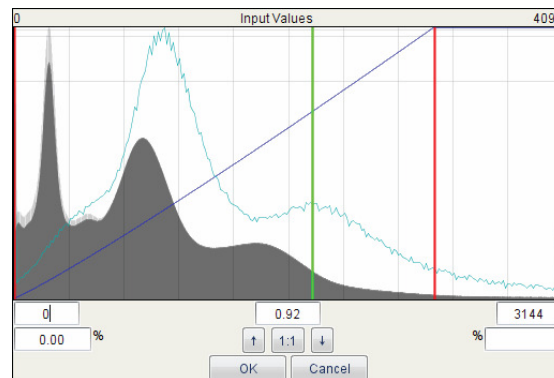


Right Sagittal View Selector



Adjust Histogram Levels In the 2D view the green lines indicate gamma/grayscale adjustments. Move the green line left or right to darken or lighten the image. This adjustment will only affect the 2D plane view.

In the 3D view the green line indicates gamma/grayscale adjustment. Move the green line left or right to darken or lighten the image. The black line indicates and adjusts the grayscale level of the voxels. These adjustments only affect the 3D image view.



Contrast and Brightness Adjustment

In 2D mode: adjusts contrast and brightness for 2D plane views. The lower the slide, the greater the effect.

In 3D mode: adjusts contrast and brightness of the 3D image view. The lower the slide, the greater the effect.



3D Image Volume Threshold Adjustment

The slider will adjust the grayscale level of the voxels. The lower the slider, the lighter the grayscale.



3D Image Volume Transparency Adjustment

Adjusts the transparency of the 3D view. The higher the slider, the more transparent the voxels become.



Reset 3D Image Volume to Original Orientation



Display the 3D Image Volume in High Resolution



Activate the Pseudo Color Mode in 3D Image Views



3D Crop Area Selector Used to select the part of the image volume to be rendered if the ROI is selected in the 2D view first.



3D Image Volume Borders On/Off



3D Image Volume in Perspective Mode Display Selector