



FLORA STONE MATHER CENTER FOR WOMEN

10 years in the making ■ 2003 - 2013



From the Former Director – Dr. Dorothy C. Miller



We are pleased to present you with highlights from the first 10 years of the Flora Stone Mather Center for Women. Our offerings, our participants and our supporters have increased exponentially each year. With the help of the Flora Stone Mather Alumnae Association, we have raised nearly \$3 million in endowments. But we've got much more to do.

When you read this, I will be retired from the best position I've ever had. It's been a privilege to build the Center, knowing always that I was standing on the shoulders of many people who never gave up the dream of having a women's center. Thanks to all of you who made the Center possible and contributed to our efforts.

Under the skilled leadership of the new director Shannon Lundeen, the next years of the Center will be exciting ones, including the Center's move into the Tinkham Veale University Center. As we enter our "teens" there will be new growth and possibilities. I hope you will join me in continued support for our campus and community resource.

From the Director – Dr. Shannon Lundeen

This is an exciting transition year for our Center during which we will reflect on the Center's accomplishments, celebrate the efforts and achievements of those who made the first ten years possible, and build our vision for the next decade of the Flora Stone Mather Center for Women at CWRU.

The Center will continue to expand, diversifying our constituency and our programming to respond to the needs of individuals in an ever-changing social, political, and economic climate both here at CWRU and beyond. As the new Director, I have the great privilege of standing on the shoulders of those who came before me and made the Center for Women at CWRU possible.

I look forward to continuing the Center's legacy of meeting head on the challenges of advancing women and achieving gender equity in our local and extended CWRU communities.



From the CAB President – Beth Embresia



Celebrating the 10th Anniversary of the Flora Stone Mather Center for Women is a joy for all of us! The Community Advisory Board, the Center staff, the Flora Stone Mather alumnae, countless donors, Dorothy Miller, and Lynn Singer have all championed the Center and its mission since its inception.

Because of the passion, commitment and vision of all of you, the Center has grown and thrived. It started in providing women at CWRU and in the community the opportunities to develop and flourish, and it continues to do so. Under the leadership of Shannon and the talented Center staff, it continues to do just that, while expanding its offerings to empower and educate more women.

Thank you to all of you for enabling this to happen. And, thank you to those who will support the Center going forward. Together, we can work to extend the Center to greater numbers of women.

Table of Contents

We Begin: Fall 2002.....	4
Dedication – October 23, 2003.....	5
Health Education and Advocacy.....	6-7
Working with Men.....	8-9
March is Women’s History Month.....	10-11
WISER - Women in Science & Engineering Roundtable.....	12-13
Faculty Development.....	14-15
Women of Achievement.....	16-17
Timeline.....	18-19
Spotlight Lecture Series.....	20-21
Staff Programs.....	22-23
Campus Discussion Groups & Presentations.....	23
Community Advisory Board.....	24-25
Multicultural Initiative Events.....	26
Black History Month Events.....	27
Feminist Programs & Discussions.....	27
Student Interns 2003-2013.....	28
Programming & Administrators.....	28-29
Thanks to our Donors.....	30-34
Support the Center for Women.....	35

“We must insist that women be heard. That our voices and our life experiences count at last in all the places where our future is decided. The long term reality is indeed that our private life depends on public life, that we have to move beyond this era of lopsided change, into a world in which men and women’s values are more balanced. This is the challenge of the next generation, who will be meeting in your center. It’s a tall order, but every bit exciting in its possibilities as the onset of the women’s movement was thirty years ago.”

– Ellen Goodman, syndicated columnist, speaking at the Dedication of the Center for Women, October 23, 2013

We Begin - Fall 2002

In the first year of operations more than 1000 people attended events and visited the web site.

At first, we operated out of a small office on Bellflower, while plans were drawn up for a permanent space in Thwing Student Center. Renovations were complete by late spring 2003, and we moved in that summer.

During that first year we received advice and program assistance from a range of campus partners including several student volunteers, more than fifteen student groups, the College of Arts and Sciences, the Baker-Nord Center, the Office of Housing and Residence Life, the Office of Multicultural Affairs, and the Office of Student Activities.

Signature programs, including the Act III discussion group, our Multicultural Program Series, and the Project on Men and Gender, were established. We began Health Education and Advocacy initiatives and observed events such as Women's History Month, Black History Month, and Administrative Professionals Day.

The Center immediately became an integral part of the new Academic Careers in Engineering and Science (ACES) program, an NSF ADVANCE grant that was launched in the fall of 2003. As part of that project, we worked and continue to work to enhance women's opportunities for faculty development and networking, and on developing educational modules about gender in the classroom to use with science and engineering graduate and undergraduate students.

The Team: FY2004

[L-R] Dorothy Miller, Jacqueline Green, Karen Ziarnowski, Nichole Carter, Kwynn Mason, Ginette Boyarko, Josh Gohiki, Rique Harshman, Dana Blocker.



Conversion of Thwing Center third floor space for the new Center offices and a small conference room.

The Center's first Steering Committee, with campus-wide representatives, was established. Steering Committee members and others came together as the Center for Women Strategic Planning Committee, which met throughout the year with the assistance of a student consultant group from the Mandel Center for Nonprofit Organizations. We are grateful for the hard work and dedication of everyone who worked to produce our first five-year plan.



Dedication – October 23, 2003

On October 23, 2003, the Center for Women Dedication and Symposium was held in Thwing Center and attended by more than 350 participants.

The program included greetings from distinguished guest Mayor Jane Campbell and we received a proclamation from Congresswoman Stephanie Tubbs Jones.



Ellen Goodman, Lynn Singer, Edward Hundert and Dorothy Miller

President Edward M. Hundert welcomed the Center to the campus and introduced the keynote speaker, syndicated columnist and Pulitzer Prize winner Ellen Goodman.



Dorothy Miller holds the official proclamation.



The morning symposium, *Women's Visions for a Strong Community: Leadership, Health, and Education – A Symposium that Belongs to All of Us*, was followed by a luncheon

a discussion and a ribbon-cutting ceremony. The symposium built upon the initiatives begun at the Flora Stone Mather Alumnae Association's Women 2000 conference.



Dorothy Miller and Lynn Singer cut the ribbon and officially open the Center.



CWRU women student a cappella group Solstice greeted guests at the Center the day following the dedication.



Center Advisory Board President Susan Troia with Dorothy Miller and Lynn Singer

Health Education and Advocacy



Dana Blocker 2004-2006

From a residence life advisor to Dana: I hear you helped ...one of my residents with a few relationship issues. He ended up coming to see me later that day for further processing, and he raved about your support. He's doing fine now ...calmed down a ton. The situation is in a good place. I've been meaning to send this email since spring break - just to say thanks.

Dana Blocker, our first Women's Health Advocate, developed student collaborations on health-focused projects, facilitated discussion groups, and provided individual counseling for students, with a particular focus on sexual assault on campus.

From the start, programs and activities involved collaborations with campus offices and community agencies.

In 2005, the Center began chairing the campus-wide **Sexual Assault Prevention and Information Task Force**. The task force is made up of individuals from Student Affairs, Campus Police and other campus offices who work together to raise awareness, prevent sexual misconduct and foster respect and safety in the university community.

Katie Hanna expanded the membership of the campus Task Force, and changed the name to the **Sexual Conduct Committee**, signifying a permanent status in the university. Under her leadership, the committee developed the **Sexual Conduct at Case website** - case.edu/diversity/sexualconduct - and worked with others to revise and reform the university's sexual assault and sexual harassment policies. We began to provide on-site support at University Health Services including depression screening.

The **SMARRT Program** (Students Meeting about Risk Reduction Training) is a collaboration between the Center for Women and Greek Life that trains students to educate peers about sexual assault.



Catharsis Productions' Sex Signals

To Katie Hanna: I am writing you a genuine letter of thanks for all of your help with my Female Empowerment in the Face of Domestic violence symposium. I was nothing short of flabbergasted when I looked through the folders you had compiled for us; clearly much effort and compassion went into assembling them.

Other special projects have included co-hosting a portion of the **AIDS Quilt**; **Breast Cancer Awareness**; **Eve Ensler's The Good Body**; **Valentine's Day Sex Information Packets**; **Training for University Student Health Advocates**, and a **Susan Komen "Race for the Cure" Team**.

The Center continues to provide workshops and events to educate students about all aspects of sex, including safe sex practices, sexuality, consent and healthy relationships.

Special events such as **Catharsis Productions' Sex Signals** continue to be a successful way to engage staff and students regarding communication, gender roles, and dating issues. *Sex Signals* was so successful that the university invited them back to appear at all orientation sessions for incoming students.



Tag with emergency contact information designed for students to put on their key ring.



Katie Hanna 2006-2011

Monica Yost Kiss became the Women's Health Advocate in 2012. Monica is a Licensed Independent Social Worker (LISW-S) that provides confidential counseling services.

Under Monica's leadership the student SAVE group (Sexual Assault and Violence Educators) has expanded its educational activities and conducts large scale advocacy and awareness events including Domestic Violence Awareness Month (October) and Sexual Assault Awareness Month (April), Voices Against Violence, The Clothesline Project, Take Back the Night, and the film screening of the documentary The Invisible War.

Monica provides trainings and educational programs to the campus community about sexual assault, relationship violence, policies re: sexual misconduct, and how to support survivors. She continues to chair the Sexual Conduct Committee, which, under her leadership, will expand its membership to more campus-wide stakeholders. She also supervises a professional student intern from the Mandel School of Applied Social Sciences.



Monica Yost Kiss - Current

RE Monica Yost Kiss: [Monica] has provided me with support and advice that could not have been given by a peer. The environment in her office is such that I always feel encouraged to discuss any issue that is troubling me at the time. I always feel safe and comfortable to reveal whatever is going on."



Nicole Carter - That Takes Ovaries!

An open-mic night, co-sponsored with Alpha Chi Omega, invited tales of women's courage.

On four occasions the Center sponsored That Takes Ovaries! a celebration of everyday feisty females, those who haven't made the history books or the cover of Time magazine but who have taken on the tired, false stereotype of the passive female.

RE That Takes Ovaries: I attended "That Takes Ovaries" last week, and I just wanted to let you know how impressed I was with the program. I am not much of a crier, but I was moved to tears on several occasions. As a relatively involved student at Case, I attend oodles of programs every semester, but I can honestly say that that program was one of the best.

The collage features several event posters:

- THE INVISIBLE WAR**: Written and Directed by Kirby Dick, Academy Award Nominated. Documentary on issues of sexual assault within the U.S. Armed Forces. Post-movie Panel Discussion. Tuesday, March 26, 2013. 5pm. STROS AUDIT. No adm. Spon.
- THE CLOTHESLINE**: October is Domestic Violence Awareness Month. Join us on Friday, Oct 5th, 12:30-2pm in the Thwing Atrium for THE CLOTHESLINE. Includes a "TAKE BACK THE NIGHT" logo.
- VOICES AGAINST VIOLENCE**: Speak out against DOMESTIC VIOLENCE and INTIMATE PARTNER VIOLENCE. The Susan G. Komen Breast Cancer Foundation. The first 50 attendees will receive a complimentary ticket to The Jolly Scholar!
- TAKE BACK THE NIGHT**: 3RD ANNUAL TAKE BACK THE NIGHT. SHATTER THE SILENCE. STOP THE VIOLENCE in relation with Sexual Assault Awareness Month. SPEAK OUT AGAINST SEXUAL ASSAULT. Tuesday, April 16 7pm. KSL Oval. Rain site: Thwing Atrium.
- RACE FOR THE CURE**: Presented by Coplat. NATIONAL SERIES SPONSORS: AIA, Coldwater Creek, Ford, Kellogg's, newbalance, Quince, Silke. NATIONAL SERIES HONORARY CHAIR: FRANCIE LARRIEU SMITH.

Working with Men

In 2004, working with the Center Administrator Ginnette Boyarko, Heath Advocate Dana Blocker helped establish the **Project on Men and Gender** (renamed **Program on Men and Masculinity**).

Collaboration with male faculty, staff and student groups, such as the Interfraternity Congress (IFC), helped launch this initiative and provides a platform for programming focused on topics relevant to our male constitutions.

Additionally, our work with men extended to the community from 2005 through 2008 when, due to Ginnette Boyarko's leadership we chaired the **Cleveland Area Men's Violence Prevention Task Force** (MVPTF), a coalition of twenty-nine organizations in Northern Ohio.

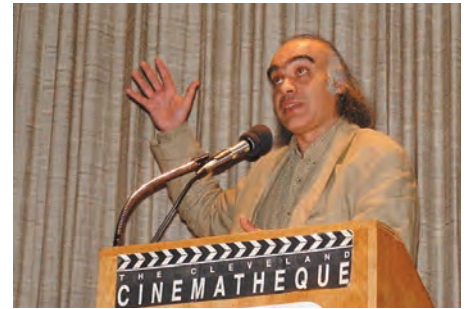


Jackson Katz:
Tough Guise: Violence, Media, and the Crisis in Masculinity

"It is ironic that men who speak out against men's violence against women often are called wimps, when they actually have to be more self-confident and secure than men who remain silent in order to fit in and be one of the guys," say Katz.



Sut Jhally:
Wrestling with Manhood (video)
Filmmaker and scholar Sut Jhally presented his film about the National Wrestling Federation. The event was cosponsored by MVPTF - CWRU's Interfraternity Congress, Cleveland Institute of Art and Cinematheque.



On Sut Jhally: Thanks so much for bringing Sut Jhally to campus. My students and I had a really great discussion in class today--those who were there last night relayed what they saw and heard to the other students in the class, most of whom were at least somewhat familiar with the world of wrestling (which I was not and so I was AGHAST at what I saw!).

— CWRU Professor.



Don McPherson:
You Throw Like a Girl
Former NFL football player Don McPherson discussed how masculinity is often defined by what it is *not* (feminine, girlish) rather than by what it is.



Robert Jensen:
Click it or Kick it? Pornography and the Price of Pleasure
A presentation by Dr. Robert Jensen, Professor in the School of Journalism at the University of Texas and author of *Getting Off: Pornography and the End of Masculinity*, was well received.

Men Can Stop Rape campus organization workshop





Two-Night Series on Hip Hop and Women

Byron Hurt:

Hip Hop: Beyond Beats & Rhymes (Video)
 Rap Sessions Panel: Does Hip Hop Hate Women?

This event was cosponsored by the Department of Black Studies at Cleveland State University and various other campus and community organizations. Strosacker Auditorium was filled both nights.



RE: Hip Hop Program: I just wanted to let you know that last night was fabulous and I am extending my congratulations to you for having the gumption to do something different.

One of the best seminars I've ever been to on campus - brought community, students, faculty together.

This film and the related discussion is timely and critical. I think that discussions about gender, sexuality, misogyny, homophobia, violence against women, etc., must be broadened to include every cross section of society. Thank you for bringing the speakers to the community.



Matt Ezzell: *Hunk, Hustler, Hard-Ass: Masculinity in the Media*. Ezzell is assistant professor of sociology at James Madison University.



Watch Your Ass!
 The Structure of Masculinity in Video Games



Watch Your Ass: The Structure of Masculinity in Video Games"

Panelists: Alex Leslie, Cleveland Rape Crisis Center; Adam DiCristifaro, Domestic Violence & Child Advocacy Center; Neal Hodges, Scenarios USA; and Dr. Derek Burrill, UC Riverside and author of *Die Tryin' Videogames, Masculinity, Culture*.

March is Women's History Month



2004: Third Wave Panel and Discussion
 (l-r): Debbie Stoller, Lisa Jervis and Asata Reid, Editors of feminist publications *Bitch Magazine*, *Bust*, and *Fierce*, discussed *Third Wave* feminism.

2005: Yolanda Lopez



Latina Artist Yolanda Lopéz presented on her art and its relationship to being Mexican-American in the U.S.A. Her visit included an on campus address *The Virgin of Guadalupe and her Impact as Role Model*.

Lopez also gave an Informal talk and reception at Artefino Gallery Café: *Latina Artists*; and a luncheon and talk with the local **LATINA** organization about the images of Latinas in popular culture and the re-imagining of the Virgin of Guadalupe. An Informal luncheon at the Center with students, faculty and alumnae concluded with a talk to a 5th grade art class at Buhrer School.



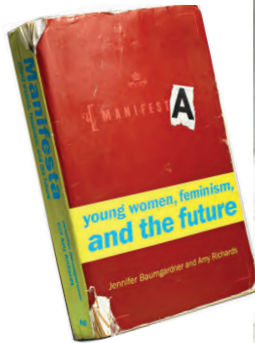
2005: Yunah Hong: *Dangerous to Know: Anna May Wong* (video)

Korean-American documentary filmmaker Yunah Hong screened her work-in-progress on the life of Anna May Wong and the portrayal of Asian women in early American cinema.



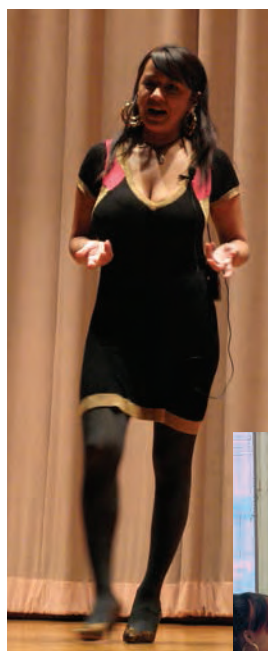
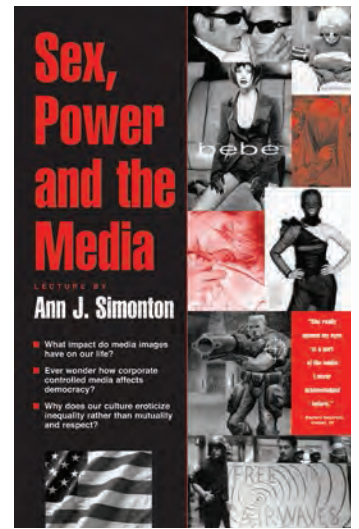
2006: Jennifer Baumgardner and Amy Richards

The authors of *Manifesta*, talked about *Young Women, Feminism and the Future*.



2007: Ann Simonton

The founder of Media Watch presented *Sex, Power and the Media*



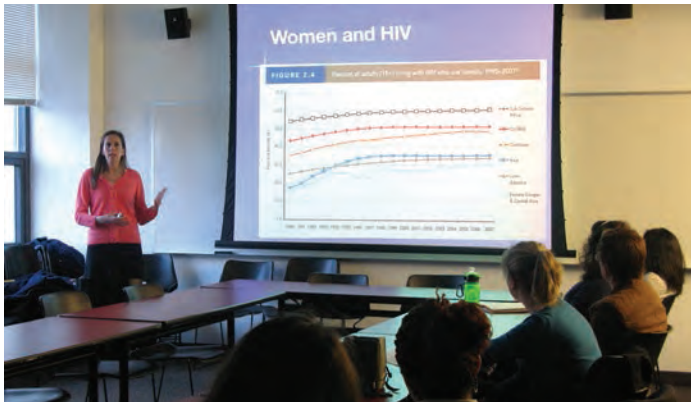
2008: Amalia Ortiz - *Speaking Out through Spoken Word*
 This talented Latina slam poet was a big hit!

2008: Women in History
 A portrayal of civil rights activist Fannie Lou Hamer by Robin Echols Cooper, was attended by 20 students from Roxboro Middle School.



2009: International Health and Ethnic Dance

At the health panel, Dr. Linda Niccolai of the Yale School of Public Health discussed HIV prevention, based on research in India, Russia, and the United States and Dr. Janet McGrath, CWRU Associate Professor of Anthropology, talked about her HIV research in Africa.



To top off the month, an evening of ethnic dance performances showcased the talents of Csardas Dance Company, the Murphy Irish Dancers, and the Demetrios Hellenic Dance Troupe.

2010: The "F" Word Panel: Multicultural Perspectives



This lively and well attended presentation and discussion featured panelists Courtney Martin, award winning author and blogger for *Feministing.com*, Dr. Siobhan Brooks, faculty of Gender Studies Department at Lawrence University, and Veronica Arreola, Director of Women in Science & Engineering Program, University of Illinois at Chicago, Professional Feminist and blogger for *Viva La Feminista*.



2011: A League of their Own: Women in Non-traditional Professions

An inspiring presentation with panelists Tari S. Rivera, President and founder of Regency Construction Services Inc., Stephanie Hall, the only woman member of the CWRU Police Force and former member of the Cleveland Police Force, and Kate Gunn, Professional Gamer.

2012: Victoria Woodhull

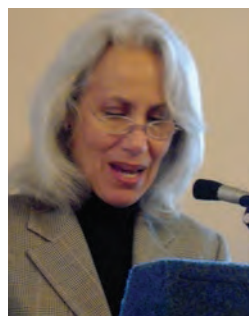
A living vignette was performed by Women in History's Georgia Swanson. Victoria Woodhull claimed many firsts as a woman: first to operate a brokerage, first to start a weekly newspaper, and first woman U.S. presidential candidate. An activist in women's rights, she left her mark as one of history's most remarkable characters.



Ana Maria Martinez with Georgia Swanson as Victoria Woodhull.

2013: Lynn Povich

Author of *The Good Girls Revolt: How the Women of Newsweek Sued their Bosses and Changed the Workplace*.



Lynn Povich began her career as a secretary in the Paris Bureau of Newsweek magazine, rising to become a reporter and writer in New York. In 1970, she was one of 46 women who came together to sue Newsweek for sex discrimination.

Five years later Povich was appointed the first woman senior editor in Newsweek's history.

A recipient of the Matrix Award for Magazines, Lynn serves on the Advisory Boards of the International Women's Media Foundation and the Women's Rights Division of Human Rights Watch.



WISER - Women in Science & Engineering Roundtable

The goal of WISER is to promote the academic excellence of women pursuing STEM (Science, Technology, Engineering, Math and Medicine) at CWRU by building a learning community and by giving them the tools they need to succeed.



Elizabeth Lierman (2007-2008)



Mary Rouse (2008-2011)



Heather Clayton Terry - current

WISER began in the 1990s when several science faculty encountered barriers to success among women students, including lack of confidence, gender-related doubts about their abilities expressed by classmates and professors, and the isolating experience of being a minority.

The founding mothers of the program were **Heather Morrison**, Professor of Astronomy; **Beverly Saylor**, Associate Professor of Geology; and **Kath Bogie**, Senior Research Associate, Orthopedics. In 2007, under their watchful eye, WISER transitioned to become part of the Center for Women.

This thriving initiative is an Undergraduate Student Government (USG) - recognized student group designed to enhance the experience of studying engineering and science for women at CWRU.

More than one thousand students have participated in WISER since its inception. The peer mentor program alone has grown from 11 pairs in the beginning to 81 mentors and 132 mentees participating in the 2012-2013 school year.

WISER's focus is on strengthening bonds between students through the peer mentorship program, building support networks among women in pursuit of male dominated professions, hearing stories of self-efficacy from staff, faculty and STEM professionals in the field and providing outreach opportunities for WISER participants to share their love for STEM with underserved girls in the community. Many of our students refer to the WISER program as not just a program but a family.

In 2008, following a year-long pilot program run on a half-time basis by graduate student **Elizabeth Lierman**, **Mary Rouse** was hired to be full-time associate director for WISER. She held this position through 2011 and was succeeded by **Heather Clayton Terry** in 2012.

In 2011, CWRU was awarded the Women in Engineering ProActive Network (WEPAN) National Engineers Week Foundation award for WISER's Introduce a Girl to Engineering Day.



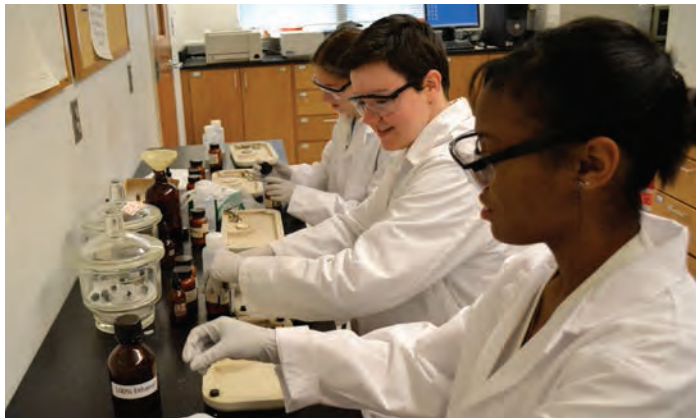
INTRODUCE A GIRL TO ENGINEERING DAY

Core WISER Programming

WISER Executive Committee (student-run)



Students are elected by their peers to the committee and are responsible for specific leadership programs/activities to build and maintain a community of women in STEMM.



Other WISER programming includes participation in Engineering Week and the Society of Women Engineers activities, Graduate Student Lunches, Scholarships for WISER Summer research internships, Professional Development Programs, and a WISER Seva Benefit Dinner to raise funds to help educate girls in India.



Introduce A Girl to Engineering Day is part of the national Engineering Week initiative. The School of Engineering works with a significant number of student groups on campus to establish a range of programs and activities throughout the week.

Peer Mentor Program

First-year students receive academic and social advice and support from upperclass student mentors in their majors. Mentors and mentees are trained in mentor principles to ensure each mentorship experience is a successful one. Through the Peer Mentor Program, upperclass students develop mentoring skills while providing a valuable resource for first year students.

Professional Mentor Program

Third and fourth year students are paired with women scientists in the community.

On the Peer Mentor program: I feel like people are watching out for me, and are there to help me. — First year Student Olivia Dahm

Multicultural Women in STEMM Fields Who Shatter Glass Ceilings - Panel Presentation



Panelists (l-r) LaShanda Korley, Ana Locci, Lei Kao, Deeptha Babu & Cassandra McFadden gave a presentation on their experiences of working in STEMM fields.



For several years WISER's outreach to girls initiative created student led girls' science and engineering clubs to educate girls about STEMM careers and build their confidence in STEMM disciplines.

In January 2010 a bi-weekly after-school club began at John W. Raper School and later ran for five consecutive weeks in the fall and spring semesters at Citizens Leadership Academy and Monticello Middle School.

Faculty Development

Academic Careers in Engineering and Science

The Center for Women was an integral component of the Academic Careers in Engineering and Science (ACES) program at CWRU. In 2004, CWRU became the first private university to receive the prestigious five-year ADVANCE grant from the National Science Foundation (NSF)



ACES (now ACES+) seeks to contribute to the development of a national science and engineering workforce that includes the full participation of women at all levels of faculty and academic leadership. The ACES vision is for institutional transformation that leads to increased transparency and accountability as well as more equitable practices, policies, procedures and structures. The Center has built on its ACES activities to establish its Women Faculty Leadership Development program.

The Center for Women components for ACES include training, development and networking. We develop training modules for undergraduate and graduate students with regard to cultural and gender-related attitudes and assumptions that lead to biased and self-defeating behavior.

Professional Speakers and Presentations

Professional development workshops for faculty offered help with overcoming obstacles and networking opportunities with other women faculty in science, technology, engineering, and math (STEM) fields.



Sandra Harding (*center*), a prestigious women's studies scholar, came to campus as part of a collaboration with the local chapter of Phi Beta Kappa. Harding is the author or editor of nine books including: *Is Science Multicultural? Post-colonialism, Feminism & Epistemologies* and *Whose Science? Whose Knowledge?*



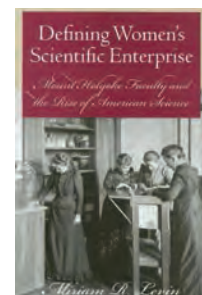
Berenice Sandler: "Warming The Chilly Climate"

Dr. Sandler was an integral part of the creation and passage of Title IX. She is Senior Scholar at the Women's Research and Education Institute in Washington, DC. Dr. Sandler received a CWRU honorary degree in 2009.

Miriam Levin: "Not The Girls Of Summers"

Special Event co-sponsored with WISER and ACES

Miriam Levin, Associate Professor of History, gave a talk and networking lunch for women faculty and students in science and engineering. Dr. Levin discussed her book, *Defining Women's Scientific Enterprise: Mount Holyoke Faculty and the Rise of American Science*, in the context of remarks by Harvard President Lawrence Summers about women and science.



Sandra Donovan (*left*): "Success Strategies for Women in Academic Careers."

More than 60 women, including faculty, graduate students, and industry executives, attended the presentation where Donovan shared insights and strategies from her 30-year career in the corporate world and as a consultant to private and public decision makers.

Women Faculty Leadership Development Institute

“What I Wish I’d Known Earlier in My Career: Some Suggestions for Advancement in Academia”



Speakers (left to right):
Robin A. Dubin, Associate
Dean for Graduate and
Professional Programs,
Professor, Economics,
Weatherhead School of
Management; Shirley
Moore, Edward J. and

Louise Mellen Professor of Nursing and Associate Dean of Research, Frances Payne Bolton School of Nursing, Judy Riffle, Professor, Organic Polymer Chemistry; Director, Macromolecular Science and Engineering Graduate Studies, Virginia Tech, and Elizabeth M. Tracy, MSW, LISW, PhD Professor and Director of the Doctoral Program, Mandel School of Applied Social Sciences.

Joan Williams: “Four Patterns of Gender Bias and Strategies for Handling Them: A Workshop for Faculty.”

Williams also presented a public lecture: “Beyond the Academy in Pink and Blue: Constraints and Possibilities for Women and Men. She is the director of the Center for Worklife Law at the Hastings College of Law, University of California.



Cathy Trower: (left) Faculty Development Luncheon

Participants dealt with issues such as navigating department culture, getting clarity about tenure, documenting progress, and getting appropriate guidance. Trower is a research associate at Harvard Graduate School of Education.

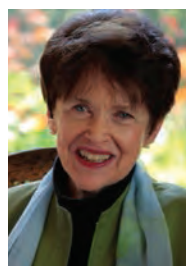


Ellen Kossek: “Work Life Balance for Faculty”

Kossek is a distinguished professor in the School of Human Resources & Labor Relations at Michigan State University.

Riane Eisler: “Women, Leadership, and Building Partnership Cultures.”

Eisler, a cultural historian and evolutionary theorist, is best known for her international bestseller *The Chalice and The Blade: Our History, Our Future*.



Susan Freimark Associate Director for Faculty Leadership Programs

Women Faculty Leadership Development Institute (WFLDI) Building upon ACES initiatives, the Center has institutionalized faculty development in our WFLDI programs. Led by Associate Director of Faculty Leadership Programs Susan Freimark, the Institute features a topic-related workshop series, guest speakers, **Women Faculty Connect** discussion group, an **Asian Women Faculty** group, and **Advice from Full Professors** panels.

To Tenure and Beyond

This key WFLDI workshop series is aimed at helping women faculty shape their academic careers through strategic skills, increased confidence and better understanding of academe.

Complementing this workshop is a program designed to help tenured women faculty make key decisions regarding the ongoing development of their career plans.

Women of Achievement



Awards presented Fall, 2005

(l-r) Deputy Vice Provost Lynn Singer ■ Sharona Hoffman, School of Law ■ Marion Good, Frances Payne Bolton School of Nursing ■ Anne Hiltner, School of Engineering ■ Patricia Marshall, School of Medicine ■ Lisa M. Maillart, Weatherhead School of Management ■ Kathleen Farkas, Mandel School of Applied Social Sciences ■ Kathleen Kash, College of Arts and Sciences. Not pictured: Yiping Weng Han, School of Dental Medicine ■ FSM Center Director, Dorothy Miller.



Awards presented March 22, 2007

L-R (seated): Diana Morris, Frances Payne Bolton School of Nursing ■ Meral Özsoyoglu, Case School of Engineering ■ Jacqueline Lipton, School of Law ■ Lenore Kola, Mandel School of Applied Social Sciences. (standing): University President Gregory Eastwood, Susan Redline, School of Medicine ■ Diana Billmorla, Weatherhead School of Management ■ Marsha Pyle, School of Dental Medicine ■ Deputy Vice Provost Lynn Singer ■ FSM Center Director, Dorothy Miller. Not pictured: Eva Kahana, College of Arts and Sciences



Awards presented September 26, 2008

L-R (seated) University President Barbara R. Synder ■ Kristin Victoroff, School of Dental Medicine ■ Christa H.S. Bouwman, Weatherhead School of Management ■ Barbara J. Daly, Frances Payne Bolton School of Nursing ■ (standing) Martha Woodmansee, College of Arts and Sciences ■ Juliet P. Kostritsky, School of Law ■ Ruth Keri, School of Medicine. Not pictured: Clare M. Rimnac, Case School of Engineering ■ Kathleen Wells, Mandel School of Applied Social Sciences. Deputy Vice Provost Lynn Singer ■ FSM Center Director, Dorothy Miller.



Dorothy Miller showing President Edward M. Hundert the first "Women of Achievement Award Winners" announcement poster (2005)

Women of Achievement and Mather Prize Award Luncheon



The first Mather Prizes were awarded in the Fall of 2005 to eight women faculty chosen by their schools for their excellence in research and scholarship. In the spring of 2006 the Center held its first annual Women of Achievement Luncheon, co-sponsored by the Office of the Provost. Women faculty across the campus were honored for their achievements of tenure, promotion, distinguished professorships and other honors. In the fall of 2007, the two events were combined in the annual Women of Achievement and Spotlight Awards luncheon.



The Mather Spotlight Awards give recognition to some of the best scholars in the country in their respective fields, demonstrating the university's commitment to recognizing women's work and providing beacons of inspiration for women students. To date sixty-three women faculty have received the Mather Prize, made possible in part by the Centennial Fund of the Flora Stone Mather Alumnae Association.



From there to here:
Top: The 2005 awards presentation was in the Spartan Room.

Left: Luncheon tables set up in Thwing Ballroom for the 2012 presentation.

Mather Prize Award Luncheon



Awards presented October 30, 2009

L-R (seated): Grace McComsey, School of Medicine ■ Jessica Berg, School of Law ■ Elizabeth Short, College of Arts and Sciences ■ Susan Helper, Weatherhead School of Management. (standing): FSM Center Director, Dorothy Miller ■ University President Barbara R. Synder ■ Suchitra Nelson, School of Dental Medicine ■ Elizabeth Tracy, Mandel School of Applied Social Sciences. Lynn Lotas, School of Nursing ■ Ica Manas-Zloczower, School of Engineering ■ Deputy Vice Provost Lynn Singer.



Awards presented October 7, 2011

L-R: Aloen L. Townsend, Mandel School of Applied Social Sciences ■ Shirley M. Moore, Frances Payne Bolton School of Nursing ■ Deputy Vice Provost Lynn Singer ■ Diane Bergeron, Weatherhead School of Management ■ Cassandra Burke, Robertson School of Law ■ FSM Center Director Dorothy Miller ■ Leena Palomo, School of Dental Medicine ■ University President Barbara R. Synder ■ Sandra W. Russ, College of Arts and Sciences. Not pictured: Maria Hatzoglou, Case School of Engineering ■ Erin Lavik Case School of Engineering.



Awards presented on September 24, 2010

L-R: Deputy Vice Provost Lynn Singer ■ Kathryn Lavelle, College of Arts and Sciences ■ Julia S. Grant, Weatherhead School of Management ■ Xin Yu, Case School of Engineering ■ Faye A. Gary, Frances Payne Bolton School of Nursing ■ Noa Noy, School of Medicine ■ T. Roma Jasinevicius, School of Dental Medicine ■ Claudia Coulton, Mandel School of Applied Social Sciences ■ Jessie Hill, School of Law ■ FSM Center Director, Dorothy Miller.



Awards presented October 12, 2012

L-R: FSM Center Director, Dorothy Miller ■ Deputy Vice Provost Lynn Singer ■ Jill S. Barnholtz-Sloan, School of Medicine ■ Alexis R. Abramson, Case School of Engineering ■ Marie Lathers, College of Arts and Sciences ■ Anna Maria Santiago, Mandel School of Applied Social Sciences ■ Ruqaiyah Yearby, School of Law ■ Joyce J. Fitzpatrick, Frances Payne Bolton School of Nursing ■ Yi-Jing Wu, Weatherhead School of Management ■ Lisa A. Lang, School of Dental Medicine ■ University President Barbara R. Synder.



2010
Special Award from
the Office of the Provost
Dorothy C. Miller
Director, Flora Stone Mather
Center for Women



2011
Notable Woman of the Year
Lynn Landmesser
Arline J. & Curtis F. Garvin Professor
School of Medicine



2010
Notable Woman of the Year
Cynthia Beall
Distinguished University Professor,
S. Idell Pyle Professor of Anthropology,
College of Arts & Sciences;
Professor of Anatomy and Global Health
School of Medicine



2012
Two Notable
Women of the Year
Edith Lerner
Professor Emerita
Department of Nutrition
School of Medicine



Sarah Taylor
Chair CWRU Faculty Newcomers Committee

Moved to a newly constructed space in Thwing Student Center



Act III, a group for women of retirement age, is launched

2003



Ginnette Boyarko hired as the first office administrator



Dorothy Miller begins work as the first director with an office in Bellflower Hall



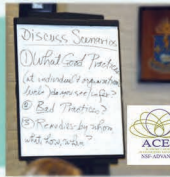
2002



Dana Blocker is hired as the first women's health advocate

Center participates in the NSF-ADVANCE (ACES) grant team

Work begins on the first CFW Strategic Plan, with campus-wide and alumnae committee of more than 25 people



2004

The Project on Men and Gender is established as a Center Signature Program

2005

The Community Advisory Board (CAB) is launched



Dedication of the Center for Women, with Ellen Goodman and ribbon cutting ceremony

The first Mather Prizes were awarded to eight outstanding women scholars chosen by their schools



The Center for Women holds Naming Celebration with Susie Gharib, "You've Come a Long Way Baby."

Special guests Patricia Kilpatrick and Kate Offut, great granddaughter of Flora Stone Mather



The first Women of Achievement luncheon is held, honoring women who achieved tenure & promotion or named professorships

2006

The Center chairs the campus-wide Sexual Assault Prevention and Information Task Force

Katie Hanna is hired as new associate director for women's health advocacy



Flora Stone Mather Alumnae Association disbands, pledging \$1 million, but challenging the Center to raise \$1 million matching funds in five years

2007

The SMARTT (Students Meeting about Risk Reduction Training) is enhanced by a collaboration between the Center for Women and Greek Life. With SMARTT students learning to educate peers about sexual assault and intimate partner violence.



2008



Center is one of the 8 agencies in Cleveland to receive \$1400 for Women's Health Month

We mourn the passing of Mather Alumna and Center friend, Stephanie Tubbs Jones, - honorary chair of our Challenge Campaign



The Center hosts a Northern Ohio academic Women's Centers meeting



Director Dorothy Miller receives a special award from the Office of the Provost for her work at the Center



2009

Mary Rouse joins the Center staff as the inaugural associate director for women in STEM



2010

Mitzi Vazquez-Long joins the staff as the new associate director

WISER's Introduce a Girl to Engineering Day receives National Engineers Week Foundation award



2011

Completion of the second strategic plan, based on constituency surveys and feedback from all



Women Faculty Connect begins



Mitzi Vazquez-Long is chosen by Kaleidoscope Magazine for its Cuarenta/Cuarenta Club 2010 (Hispanic 40 under 40 outstanding Hispanic individuals in Cleveland)

Susan Freimark joins the staff as associate director for faculty development



Faculty leadership programs expand with collaboration of the Women Faculty of the School of Medicine and the women's staff (MD) programs at the Cleveland Clinic

2012

Center co-sponsors Trauma Stewardship Workshop on CWRU campus – with Domestic Violence Center, Preterm Clinic and Cleveland Rape Crisis Center



Susan Freimark receives 2012 Toyoko Yamashita award for excellence in supporting the mission of the Women Faculty of the School of Medicine

Katie Hanna named Best Young College Health Professional in Ohio by American College Health Association

Gift from Roman Aronoff completes Mather Alumnae Challenge



The Center experiences a lot of change as we send people off to fulfill their dreams and women join us as part of their dreams



Monica Yost Kiss joins the staff as associate director for women's health advocacy. Katie Hanna appointed director of Ohio Alliance to end Sexual Violence



Heather Clayton Terry is recognized by Residence Life in Student Affairs as having a significant impact on second-year student advising

Jodene Carrasquillo joins the staff as assistant director. Mitzi Vazquez-Long moves to Human Resources

Monica Yost Kiss is one of only 14 nominees for the J. Bruce Jackson, MD award for undergraduate mentoring



2013



Heather Clayton Terry joins the staff as associate director for women in STEM. Mary Rouse takes a management position in patient education at the Cleveland Clinic



Amanda Cusick Kenney joins the staff as associate director for programs



The inaugural Flora Award honorees, Priscilla Cooper and Terri T. Davis are feted at a reception at the Western Reserve Historical Society

Jessica McRitchie joins the staff as department administrator. Jodene Carrasquillo takes accounting position with Kelvin Smith Library



Shannon Lundeen takes over as the second director of the Center for Women and begins to take it to the next level



2014

Spotlight on Women's Scholarship Lecture Series

The Center for Women was honored to inherit the Spotlight Lecture Series, begun in 1988 through the Centennial Fund Endowment that originated from the proceeds of the Centennial Celebration of the Flora Stone Mather College Alumnae Association.

The series is meant to highlight the work of women faculty, promote understanding of women's accomplishments (and struggles) in the academy, and promote networking among women faculty and graduate students.

Speakers in the series discuss their scholarly work in a way that is accessible for a general audience, not necessarily people in their field.



SPRING 2003

Robbie Davis Floyd

Flora Stone Mather Visiting Professor in Anthropology

Birth: A Women's Issue: discussing birthing practices around the world



SPRING 2004

Jann Passler

Flora Stone Mather Visiting Professor in Music, College of Arts and Sciences

Writing Music History as a Woman



SPRING 2004

Laura Hengehold

Assistant Professor of Philosophy, College of Arts and Sciences

Living Contradictions: Poor Women and the Limits of Public Discourse



FALL 2004

Catherine Albers

Associate Professor of Theatre, College of Arts and Sciences

An Actor's Journey through John Donne, Cancer and 'W;t'



FALL 2004

Heather Morrison

Professor of Astronomy, College of Arts and Sciences

Getting to know the Neighbors: Discovery of a New Galaxy Orbiting Andromeda



SPRING 2005

Dorothy Merritts

Flora Stone Mather Visiting Professor in Geology, College of Arts and Sciences

Geology, Nuclear Power, and the Threat of Earthquakes



FALL 2005

Marion Good

Professor, Frances Payne Bolton School of Nursing

Research, Nursing, and Being Female



FALL 2005

Susan Hinze

Associate Professor of Sociology, College of Arts and Sciences

Gender Matters in Medicine: On Becoming and Being a Physician



SPRING 2006

Sharona Hoffman

Professor of Law, School of Law
Professor of Bioethics, School of Medicine

Racially-Tailored Medicine Unraveled



SPRING 2006

Kathleen J. Farkas

Associate Professor, Mandel School of Applied Social Sciences

Conducting Research with Women in Jail



FALL 2006

Susan Helper

Professor of Economics, Weatherhead School of Management

Global Production and Local Prosperity: Can they Co-exist in Cleveland?

More than 75 women faculty have lectured in the series. These are the series speakers since 2003.



FALL 2006

Cheryl Toman

Assistant Professor of French; Faculty in Women's Studies & Ethnic Studies
College of Arts and Sciences

The Second Sex in an African Context: Perspectives on 'Othering'



FALL 2009

Reena Mehra

Assistant Professor of Medicine and Medical Director of Adult Sleep Disorders Center, School of Medicine

Living the Dream: A Sleep Specialist's Perspective



SPRING 2007

Karen Beckwith

Flora Stone Mather Professor of Political Science
College of Arts and Sciences

Women, Politics and Political Science



SPRING 2010

Cynthia Beall

Sarah Idell Pyle Professor of Anthropology, Co-director, Center for Research on Tibet, College of Arts and Sciences

Tibet Adaptation to High Altitudes



FALL 2007

Marsha Pyle

Associate Professor, School of Dental Medicine

Chewing with Wrinkles and Pedagogy: Uncommon Synergies



FALL 2010

Marie Lathers

Elizabeth M. & William C. Treuhaft Professor of Humanities and French, College of Arts and Sciences

Space Oddities: the Slow 'Race' to get Women into Space



SPRING 2008

Ellen Landau

Professor of Art History,
College of Arts and Sciences

Dance as a Weapon: Isamu Noguchi's History as seen from Mexico 1936



FALL 2011

Kimberly Emmons

Associate Professor of English & Director of Composition, College of Arts and Sciences

But Words can Never Hurt Me? The Gendered Language of Depression in the Age of Self-Care



FALL 2008

Melissa Knothe Tate

Associate Professor, Departments of Biomedical and Mechanical and Aerospace Case School of Engineering

Life at the Interface of Biology and Mechanics



SPRING 2012

Jessie Hill

Associate Dean for Faculty Development and Research, Professor of Law CWRU School of Law

The Law of Reproductive Rights: Privacy, Equality, Health, or Something Else?



SPRING 2009

Miriam Levin

Professor of History and History of Art; graduate faculty History of Science, Technology, Environment, and Medicine.

Urban Modern: Inventing a Culture of Change in the Second Industrial Revolution



SPRING 2013

Ruqaiyah Yearby

Professor & Associate Director, Law-Medicine Center, School of Law

Separate and Unequal in a 'Post-Racial' World: The Paradox of Fixing Racial Disparities in Health without Addressing Racial Bias

STAFF Programs

From 2004 through 2010, the Center held an **Administrative Professionals Day luncheon** featuring speakers such as **Connie Dieken**, director of the media firm On Point Communication, "Communicate like a Pro". and **Dr. Jacklyn Chisholm**, former Vice President of Planning and Institutional Relations, Rock and Roll Hall of Fame; LaTida Lester, Senior Program Officer Saint Luke's Foundation, and **Ellen Bravo**, founder of 9 to 5.

Connie Dieken



Jacklyn Chisholm



Ellen Bravo



Subsequently, building on the advice of women staff and to better respond to staff needs, we switched to smaller, more intimate gatherings throughout the year.

Since 2010 the Center has developed discussion groups for administrative staff, worked with Human Resources and the Office of Diversity Inclusion and Equal Opportunity to help establish staff affinity groups, and strengthened our Women Staff Leadership Development Institute (WSLDI).

Women Staff Leadership Development Institute (WSLDI) Initiative: *Cultivating Local Talent*

Inspired by the leadership of CWRU President Barbara Snyder and motivated by a desire to start an on-campus leadership development program for women staff, a visionary group of CWRU women created the Women's Staff Leadership Development Initiative (WSLDI) which launched in spring 2008.

Under the auspices of the Center for Women, the program offers women professional staff an opportunity to enhance leadership skills and energize career development through education, coaching, and building networks. In addition, through its support of professional women staff, WSLDI seeks to improve communication, collaboration, and trust across university units to create a synergy that promotes the university's best practices. WSLDI complements training and education offered by the university's Department of Human Resources.

Intended to serve the needs of women in a supportive environment, the enrollment is limited to 12 participants per year.

Research has shown that women face particular challenges in the work environment. The program is designed to address women's issues and challenges within the context of the overall leadership curriculum.

While many of the content can and does apply to men as well, we know from similar programs that programs for women that focus on the circumstances of women's work lives within the overall context of work life are very beneficial to women.

WSLDI Class of 2013



Campus Discussion Groups & Presentations

On Connie Dieken:

What a wonderful program yesterday! I left totally inspired and felt every minute was filled with worthwhile information. It was a perfect program and Connie couldn't have been a better choice.

WILD Wednesdays (Women in Leadership Discussions) – now called *WHAT? Wednesdays*



These monthly brown-bag lunch sessions featured discussions of contemporary topics of interest.

This is a special space that frequently includes students, staff and faculty. All are invited.

Topics have included:

77 Cents: The Wage Gap; The Objectification of Halloween Costumes; Finding Your Voice, and Differences in December.

ACT III

This is a semi-monthly "drop-in" group for women of retirement age. They gather for chats, programs, and book discussions. The group meets in the Center on the first and third Thursday of the month. Meetings vary from general group discussions to book discussions to speakers and special presentations.

Terry Trilling Josephson was invited to discuss her book, *Café Society: The Wrong Place for the Right People*



On WSLDI:

I am a proud alumna of the Women Staff Leadership Development Institute.

Before I applied to WSLDI, I was not aware of the Flora Stone Mather Center for Women and all of the amazing things this Center sponsors and supports.

It is through active and mindful participation in the WSLDI program that I have benefited from building new and stronger relationships with other smart, savvy and successful women throughout the Case Western Reserve University campus.

I have challenged myself, taken risks and tried new things because of the support of my classmates, encouragement of my coach and instructors and the tools and skills I honed in the program.

ACT III Special sessions

Presentations have included Ron Browne from Fairhill Center; a representative from TIAA-CREF discussing retirement issues and Barbra Corrado Pope (right), the author of *The Blood of Lorraine* and *Cezanne's Quarry*, who discussed her career transition from Women's Studies History Professor to Historical Mystery Novelist.



On Act III:

Act III has been a pivotal support for those of us nearing retirement, providing peer mentoring; lasting relationships, educational input on age and stage-related issues, entertainment and nourishment for the soul and body.

Throughout Dorothy Miller has been a faithful facilitator, program guide, provocateur, contributor and friend. There are those of us who have attended regularly since the group's inception. May the group continue on its meteoric trajectory.

Community Advisory Board

The Center for Women has sought, with its programs and advocacy, to establish and maintain a permeable boundary between the university and community. To this end we called upon supporters to form a community body that could function as a liaison between us and the community, including the many alumnae of the Flora Stone Mather Alumnae Association. Under the leadership of **Susan Troia**, we formed an “Ambassadors Committee” (now the Community Advisory Board or CAB) in the spring of 2005. CAB members have been invaluable in enhancing the visibility of the Center in the community, helping the Center to increase its resources, and educating the community about women’s issues. They have also launched several successful projects and programs.



Salon Series

The CAB’s Salon Series was launched in the spring of 2006 under the leadership of **Deb Nash** and **Caryn Foltz**. Salons feature brief presentations from CWRU women faculty about their research involving women, after which the faculty member conducts a discussion of the topic. Salons are held in women’s homes in various locations around Northeast Ohio.



Women Make Your Mark – The Voting Process



In the fall of 2008 the CAB sponsored this event on the CWRU campus to educate women on the history

of voting and the true power of the women’s vote today. The program included film, music and dance and a panel discussion with distinguished community and business leaders. More than 100 high school girls were in attendance.



Not Your Mother’s Politics: It’s Yours

In April, 2011, this program focused on women’s intergenerational views of politics, with more than 100 attendees at the Shaker Library, which, along with the **League of Women Voters** of Shaker Heights, co-sponsored the event with the CAB. **Dr. Karen Beckwith**, Flora Stone Mather Professor of Political Science, keynoted the forum.

Panelists included: **Britney A. Bennett**, second-year JD/MBA student at CWRU; **Stephanie Mercado**, Executive Director of the Northeast Ohio Hispanic Chamber of Commerce; **Mary Reynolds Powell**, author of *A World of Hurt: Between Innocence and Arrogance in Vietnam*; and **Rachel Daniels-Talton**, President of Synergy Marketing Strategy & Research, Inc.

Not Your Mother’s Politics II: Finding Your Voice

At this event a provocative panel discussion among generations was moderated by **Linda Lalley**, past president of the

League of Women Voters of Ohio. The keynote speaker was **Dr. Dorothy C. Miller**, Director, Flora Stone Mather Center for Women.

Panelists included **Senator Grace Drake**, Director, Ohio Center for the Advancement of Women in Public Service, CSU; **Jill Miller Zimon**, Pepper Pike City Council member; **Elizabeth Hajar**, Consultant at Global Cleveland Initiative and Coordinator of Convencion Hispana; and **Mexie Wilson**, Hip-Hop activist. The women shared what politics means to them and how it has affected their lives.



Art Auction 2008

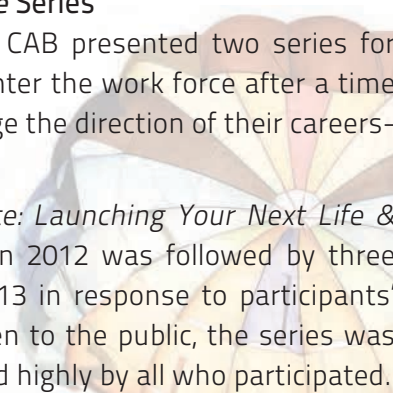
During Alumni Weekend the CAB sponsored a raffle and silent auction for arts and crafts of all types. Paintings, sculpture, crafts, jewelry, and wearable art were featured while guests enjoyed wine and cheese while bidding.



Coloring Your Parachute Series

In 2012 and 2013, the CAB presented two series for women desiring to reenter the work force after a time out or wanting to change the direction of their careers-in-progress.

Coloring Your Parachute: Launching Your Next Life & Workplace Adventure in 2012 was followed by three more workshops in 2013 in response to participants' feedback. Free and open to the public, the series was well-attended and rated highly by all who participated.



Flora Awards 2013

The first of the annual Flora Awards were presented in the spring of 2013 to women in the community who do extraordinary work on behalf of women and children who have few resources and fewer advocates.



Flora Awardees Prisscilla Cooper and Terri T. Davis

Flora Stone Mather Center for Women Community Advisory Board Members - Present and Past

Note: Honorary members are given this title for distinguished service when they served.

Lynn Alfred-Hanson
 Montrie Rucker Adams
 Hedy Kangesser Adler
 Linda Alexander*
 Erin Bartman
 Britney Bennett*
 Susan T. Berlin*
 Wanda Jordan Birch
 Vikki Broer
 Viviana Coello-Wilson
 Barb Collins
 Christine Cowan-Gascoigne
 Denise K. Davis
 Dianne Derrick
 Susannah Thompson Doman
 Beth Embrescia (President)*
 Katie Emerson*

Lin Emmons*
 Heather Roulston Ettinger
 Holly Fidler*
 Jane Finley*
 Caryn Foltz*
 Kate Foster*
 April Galda
 Terri Garfinkel*
 Charlotte Guggenheim
 Collette Taddy Hart*
 Elizabeth Hajar
 Edie Fellingier Hirsh
 Ka-Pi Hoh*
 Dianne Hunt
 Mittie Imani Jordan
 Kathryn Karipides*
 Patricia Kilpatrick (Honorary)

Rachel Kirsh*
 Sue Friedman Klarreich*
 Kristen Manter
 Deb Nash (Honorary)
 Folly Patterson*
 Jill Paulsen
 Selina Rivera
 Noha Ryder*
 Nirvana St. Cyr*
 Susan Troia (Honorary – Founding President)
 Sandra Vodanoff (Honorary)
 Lisa Weitzman*
 Christina Welter
 Victoria Winbush*
 Sadie Winlock

**Current members*

Multicultural Initiative Events

The Center is committed to the improved understanding of multicultural differences and the advancement of multicultural insight and friendship. From the beginning we organized panels, speakers, and other events, cosponsored by various student groups and university units, on topics related to issues of race and culture, with a particular emphasis on gender.

The follow events are some highlights of what we have hosted:

Successes and Barriers in Administrative Careers: What Makes a Difference for African American Women?
Presentation by Roberta Boyd

On the Edge of Each Other's Battles

Documentary screening on the vision and political perspectives of Audre Lorde. Produced by Jennifer Abod.



Hispanic Heritage Month

Screening of *Frida*, which depicts the professional and private life of the surrealist Mexican painter Frida Kahlo. Followed with a panel of filmmakers and student discussants.

Other events include:

Gender, Race and the Presidential Election (2005)

Workshop for students to discuss their issues and how they connect with politics.

Telling Our Stories

A facilitated panel discussion about differing cultural experiences and impressions.

Black and White Women: Bonds & Issues in Friendships

Three pairs of friends, one white and one black, discussed their relationships.

Multicultural Dating Issues

A panel discussion on different cultural expectations and beliefs, and societal pressure and opinion.

Multiculturalism is for Everybody

Video screening and discussion of *The Way Home - a Film about Race, Gender and Class*, by Shakti Butler



The Way Home: Just wanted to thank you SO MUCH for the very much needed event earlier this week - watching and discussing "The Way Home." It was wonderful to see students, faculty, and staff interact in a safe space about very important and challenging aspects of our lives.

Who's Your Mama?

Discussion about raising multicultural children.



Panelists: (l-r) Susan Hinze (College of Arts and Sciences), Amany Farag (Frances Payne Bolton School of Nursing), Mitzi Vazquez-Long (Center for Women) and Lisa Chiu (College of Arts and Sciences). Moderator: Aarti Pyati (University Counseling Services).

Standing On Our Sisters Shoulders

An award-winning documentary that takes on the Civil Rights movement in Mississippi in the 1950s and 60s from the point of view of the courageous women who lived it – and emerged as its grass roots leaders.

These women stood up and fought for the right to vote and the right to an equal education. They not only brought about change in Mississippi, but they altered the course of American history. The screening was followed with a student response panel.

Black History Month Events

Student Multicultural Women's Lunch

Featuring Sherrie Tolliver and other members of the volunteer theatre group *Women in History*. They bring alive women of the past by "becoming" them.

Other *Women in History* Performances

- Sherrie Tolliver, portraying activist and local heroine Eliza Bryant
- Robin Echols Cooper portraying Fannie Lou Hamer
- Vernice Jackson Portraying Josephine Baker



Lonnie Brown with Vernice Jackson as Josephine Baker



Tolliver as Madame CJ Walker



Robin Echols Cooper as Fannie Lou Hamer



Feminist Programs & Discussions

Women's Rights, Women's Lives: How Our Roles and Responsibilities Have Changed over Time

A combined project of Center students and our Staff Task Force, the popular program featured a discussion of their struggles and successes in career and home responsibilities.

Interdisciplinarity: Disregarding Illegitimate Barriers

Angela Bowen, Associate Professor, California State University, Long Beach, presented a workshop series about relationships and handling insensitivity.



Looking Back to Look Forward

Carol Gilligan is best known for her 1982 work, *In a Different Voice: Psychological Theory and Women's Development*, which Harvard University Press in March 2012 called "the little book that started a revolution."

Gilligan drew a huge crowd and talked about her research findings in regard to women and young girls and how they still apply today. Looking back 30 years, she concluded that *In a Different Voice* is still relevant.



Gilligan drew quite a crowd



Dorothy Miller with Carol Gilligan

On Carol Gilligan: I just wanted to express my thanks for having Carol Gilligan here to speak. I found her comments enormously resonant. Rarely do I hear someone speak and then, for days to weeks after that, keep returning to ideas they shared--and I have done so, often, since that day.

LEFT: Fannie Lou Hamer, Victoria Gray & Annie Devine "Standing on Our Sisters Shoulders"

Student Interns 2003-2013



Kara Young



Nichole Carter



Jessica Fong



Karen Ziarnowski



Kenyatta Juniel



Laura Draper



Kwynn Mason



Rique Harshman



Lonnie Brown



Joanna N. Lopez



Jacqueline Greene



Josh Gohlike



Jiling Yang



Divya Rachakonda



Erica Steckl



Emily Newman



Brittany English



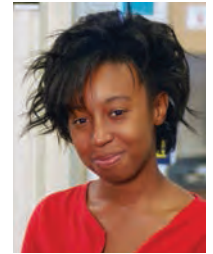
Denise Lin



Samiya Ilmudeen



Mike Singer



Marian Smith



Candace Martin



Cassandra McFadden



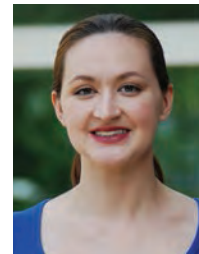
Stephanie Ohtola



Abi Pink



Alicia Traylor



Rachel Bryant



Victoria De Leon



Season Miller



Allen Mallory



Ana Laura Solano



Sara Elizabeth Taylor



Meera Thakkar



Rebecca Carter



Tessa Greene



Ana Maria Martinez



Destinee Henton



Smaranda Ene



Di Liu



Jessica Maloney



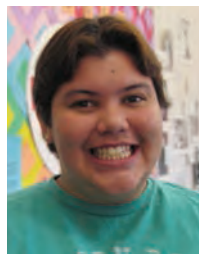
Radhika Mehlotra



Erin Moran



Rosie Rutt



Jessica Arteaga



Liz Lierman



Shahdi K. Malakooti



Paul Hirschel



Jana Krasney



Thea Harrison



Tess Pottinger



Katherine Schaub



Rebekah Kramer

Student interns have always served as the backbone of the Flora Stone Mather Center for Women, helping us fulfill our mission and a source of enthusiasm and feminist action.

What the students say about us:

From the very first time that I walked into the Center for Women, I loved it! "Unconditionally welcoming" is the best way that I have found to describe my experiences with the Center for Women. One of the things I like best about the Center is that it fosters a collaborative, supportive atmosphere. I've met some wonderful people through the Center and I always come away from it feeling empowered and rejuvenated.

The Center has helped me to develop into a better person, the type of person I want to be, and has helped me to gain a firm grasp on what I want (and don't want) out of life.

The Center has provided me with a great space to talk to friends, relax between classes, and obtain information. Their presence is warm, supportive, and hopefully permanent on this campus! I love to receive the newsletters and the information about programs upcoming events on campus. Even if I cannot attend, it is a good feeling to know that we make such positive programs and information available for our women students, staff and faculty. Please keep up the good work!

The depth and breadth of the programs brought to the Case Western Reserve University campus through the Mather Center for Women are truly remarkable. How did the women of the University ever manage before the Center?

The staff within the Center for Women are clearly devoted to the empowerment of undergraduate and graduate women at CWRU... this devotion is demonstrated through programming, advising and counseling of our students. In addition the staff are continually seeking collaborative opportunities with student organizations that both enhances the student's exposure to real world issues as well as allowing the Center to stay abreast of "student-centric" issues. They are completely committed to the whole student... ALL students are welcome there.

I have had fantastic experience collaborating with the FSM Women's Center. Working with those in the Center has been an excellent way to reach out to faculty, staff and students on campus. I'm so grateful for this immensely valuable asset to our university.

Staff and Student Programming

Amanda Cusick Kenney 2012-2013

Associate Director for Programs

Amanda joined the staff in June 2013 as the associate director for programs. Her responsibilities included creating leadership programs for women staff and students. Previously, Amanda served as the graduate assistant and program coordinator of the Women's Center at Kent State University and spent a summer during her graduate program interning with the Office of Student Activities and Leadership at CWRU, where she researched and assisted in implementing best practices in student organizations and leadership.

Amanda has a masters in higher education administration and student personnel, from Kent State University and a Bachelor of Education (cum laude) in "Adolescent to Young Adult Language Arts" from Ohio University. In 2011 she was awarded the Outstanding Emerging Professional Award from the Standing Committee for Women of the American College Personnel Association (ACPA).



Center Administrators



Ginette Boyarko (2002-2005)

Center Administrator

Ginnette Boyarko was the inaugural administrator. She managed the office and was responsible for budget and records management and supervision of student assistants and volunteers. She was also the Center's point person for the Cleveland Area Men's Violence Prevention Task Force.

Prior to working for the Center for Women, Ginnette worked for several years as a counselor, violence prevention educator, and administrator at a domestic violence and rape crisis center in California. Ginnette holds a Bachelor of Arts in English from Baldwin-Wallace College.



Mitzi Vazquez-Long (2005-2011)

Center Administrator & Assistant Director

Mitzi oversaw the Center's student internship program, coordinated many of the Center's signature events, and managed the day-to-day operations of the office. Mitzi had been at CWRU for five years and had served on search committees for the Vice President of Diversity and Inclusion and the Diversity Program Manager. She was a member of the *Share the Vision* Committee, which worked towards creating a just and humane campus for all, and was a member of the Staff Advisory Council's Staff Recognition Committee.

Mitzi holds a Bachelor of Science degree in sociology from Cleveland State University.



Jodene Velazquez Carrasquillo (2011-2013)

Center Administrator

Jodene began working at the Center in October 2011, bringing with her a wealth of knowledge and experience in working with community-based, non-profit organizations with a focus in the areas of education administration and strategic financial & accounting management.

Jodene is a Chicago native and earned her Bachelor of Arts in psychology and Latin American and Latino studies from the University of Illinois at Chicago (UIC) and her Master of Business Administration from National-Louis University.



Jessica McRitchie (2013-Present)

Center Administrator

Jessica McRitchie is a veteran employee of CWRU and brings to the Center a broad knowledge of the University. She has worked at the CWRU School of Law and was assistant director at the Schubert Center for Child Studies. She has served on local boards for organizations including the Cleveland Council of World Affairs and The Foundation for Community Betterment.

A native Clevelander she holds a Bachelor of Arts in political science with a minor in psychology from Case Western Reserve University. She is currently studying conflict transformation and management at Kent State University.

Thanks to Our Donors

We are grateful to the following donors who are helping to make the future bright for our students and all of the women we reach.

Lotus Circle Champions \$10,000 and above

Lynne B. Alfred-Hanson
Jeanette Grasselli Brown
Estate of Frances K. Bradner
Flora Stone Mather Alumnae Association
Friedman-Klarreich Family Foundation
April Galda
George N. & Roma Aronoff Philanthropic Fund
Ann Harsh
Nancy Kurfess Johnson
Kathryn Karipides
In honor of Patricia B. Kilpatrick
In memory of May Chicris
Toby D. Lewis Philanthropic Fund
Dorothy C. Miller
Virginia Edwards Lovejoy
Enid A. Sharpe
The Nazem Family Foundation
On behalf of Susie Gharib

Lotus Circle Stars \$5,000 to \$9,999

Anonymous
Randall J. Barbato (Mr. & Mrs.)
The Cleveland Clinic
The Cleveland Foundation
Barbara Collins
Columbus Foundation
Edith F. Hirsch Philanthropic Fund
Babs H. Glickman
Jane Glickman
Linda Glickman
Arlene T. Monroe Holden
Robert A. Kempe
Patricia B. Kilpatrick
In memory of Janet O'Harra Binder
In memory of Dr. Anne Hiltner
In memory of Dr. Frances Wolpaw
Cathy Lewis
Deborah Nash
Barbara S. Oldenburg
In memory of Jeanne La Porte Aldridge
Carole Rogier Poirier
Barbara R. Snyder
Barbara Thatcher Williams

Lotus Circle Patrons \$2,500 to \$4,999

Lillian Miller Emmons
Kay Wagner Fisher
Caryn Foltz
In honor of Susan Troia
In honor of Deb Nash
In honor of Karen Nestor
Ka-Pi Hoh
Kathleen Ann Heffernan
Dianne Liddell Hunt
Mary Ann Jorgenson
The Lubrizol Corporation
Miriam Rosenthal
Ellen Rothchild
Lynn Twarog Singer
In honor of Kathryn Karipides
Sally Staley
In honor of Dorothy C. Miller
The Mt. Sinai Health Care Foundation
Paula Jean K. Stumph
In memory of Dr. Paul & Jean Chrenka
Susan Troia
In memory of Sophia Karipides
Christina Rose Welter

Lotus Circle Advocates \$1,000 to \$2,499

Joan H. Ainsworth
Linda Alexander
Patricia S. Anderson
Chris Ambrose Ash
Estate of Mrs. Hortense Straus Aub
Karen Beckwith
Jean Faubel Blanche
Linda Burnes Bolton
Catherine Glennan Borchert
Janet R. Brown
William E. Bruner, II
In honor of Patricia B. Kilpatrick
In honor of President Barbara Snyder
In memory of Polly Bruner
Florence Burmeister
Case Alumni Association
Beverly Labaj Cheselka
Christine Cowan-Gascoigne
Katie Emerson Davis
Lynn M. Eastwood
Mary McGuire Eitzen

Elizabeth Ann Embrescia
Lillian Miller Emmons
Joyce J. Fitzpatrick
In honor of Patricia B. Kilpatrick
Terri E. Garfinkel
Faye A. Gary
Phyllis Asquith Gary
Julie Louise Gerberding
Judith Makoff Goodman
Elaine F. Harris Green
In memory of Jennie S. Harris
In memory of Judith Harris Simon
Kathryn Fisher Green
Joie A. Gregor
Sally Gries
Carol J. Griffith
Charlotte R. Guggenheim
Barbara G. Gutmann
Gladys M. Haddad
Lainie Hadden
In honor of Patricia B. Kilpatrick
Milford J. Harris (Mrs.)
Joanne M. Hempel
Alberta Lantz Kelvie
Rachel Kirsh
Barbara Barr Klein
James A. Krumhansl
Patricia Penton Leimbach
In memory of Kathleen Penton, FSM'49
Edith Lerner
Bruce A. Loessin
Lynn Lotas
Kristen Denise Manter
Karen Nelson Moore
Susan Brooks Murphy
Ruth M. Ness
Karen Nestor
Florence K.Z. Pollack
Puget Sound Center
Prudence Bilutan Randall
In memory of Angela M. Leehan
Kaye Ridolfi
Lynn R. L. Ritvo
In honor of Patricia B. Kilpatrick
Janice R. Rogers
Edna F. Roth
Sandra Russ
Virginia S. Saveland
Betty T. and David M. Schneider
In honor of Caryn and Deb Schneider

Thanks to Our Donors

Schwab Charitable Fund

*On behalf of John and Sandra Fulton
in memory of Marion Q. Fulton*

Ann H. Scott

*In honor of Flora Stone Mather Class of '56
In memory of Judith Tillman Moore*

Phyllis Spindler

Tutkovics Family Fund

On behalf of Julie C. Tutkovics

University Hospital Health System

Sandra M. Vodanoff

In memory of Elinor Toll Dunlop

Margaret G. Wilson Walton

Andrea Kathleen Westcot

Rebecca Ann Zuti

Christiane Northrup

Lydia Bruner Oppmann

*In memory of Polly Schrenk Bruner
In honor of Patricia B. Kilpatrick*

James Pender

In memory of Nikki Babbitt

Marcia Snavely Polyak

Cleo A. Rasch

Carol Barr Renner

Eleanor Rice

Joan W. Rigby

Sally Z. Sears

Merle B. Stern

Sun Microsystems, Inc.

The Women of Color Foundation

Lynn E. Wolfram

Dorothy M. Zanetti

Sophie Black

Barbara Anne La Porte Blair

In memory of Jeannette La Porte Aldridge

Constance Bartholomew Blood

Esther Camperchioli Bockhoff

Susan C. Bosland

In honor of Mrs. Barbara Collins

Jean Fishel Bowers

Marsha Lynn Bragg

Patricia Brandt

Donald R. Brauning

Rose Marie Brigneli

Florence Brofman

Janet Borge

Carole Miller Broome

Joan Linn Burtsche

Barbara Welsch Burrows

Mrs. Stephen Butzko

Mary J. Cahill

Ruth B. Cahn

Sally Anne Caskey

Lydia French Champlin

Joyce Chappelle

In memory of Mrs. Helen T. West

Joan Chase

Lisa Alberta Chiu

Thomas W. and Marcia Clash

In memory of Dr. Frances Wolpaw

Cecile Coleman

The College Club of Cleveland

Roslyn S. Collins

Lynda E. Conway

Shirley Hamann Copeland

Joseph J. Corrao

In memory of Dr. Frances Wolpaw

Barbara J. Daly

Marilyn Leto Damaskos

Donna Ciotta D'Amato

In memory of Mrs. Gayle Tavens

Denise Kaye Davis

Dianne B. Derrick

Sonja Diehn

In memory of Joellyn Van Horn Schier

Nathalie Robbins Diener

Susannah Doman

Debra D. Donaldson

Denise M. Douglas

Stacey Easterling

Jeannette Eckert

Edlab Group

Joan Freedman Eigner

Barbara Handler Eisen

Judyth K. Eisen

Sarah Sapir Eisen

Promoters

\$500 - \$999

Anonymous

Virginia Brooks Baldau

Betty T. & David M. Schneider Foundation

Madeline R. Block

Penny Alper Boyd

Christine F. Branche

Colleagues of Lynn T. Singer

Carolyn Bayless Cunningham

Elaine T. Diederich

Joan Batteiger Dietz

Katie Emerson

Heather Roulston Ettinger

Fidelity Investments Charitable Gift Fund

Joanne Eustis

Barbara Lee Dow Files

Saul M. Genuth

Laura Chesney Gockel

Pamela L. Gorski

Louise Nosker Grip

Marjorie H. Henderson

Joseph R. Kasa

Judith Kaufman

Nancy S. Kay

Joann Lafferty

Jane Sutphin Leitch

Lois & Martin Marcus

Family Philanthropic Fund

On behalf and Mr. and Mrs. Martin Marcus

Lucille S. Mayne

Marianne Dale Moon

Linda K. Moore

Linda M. Morris

Joan R. Mortimer

Ruth A. Myers

Sally Nenner Neville

Mary L. H. Nixon

Supporters

to \$499

Estate of Mrs. Mary R. Abbott

Leatrice Cole Abrams

Montrie Rucker Adams

Lenore T. Adams

Adele L. Adler

Charlotte Agrast

In honor of Patricia B. Kilpatrick

In memory of Mrs. Rae Herman

In memory of Mr. Joshua J. Kancelbaum

Judith Greene Albert

In memory of Ms. Susan Hansen

In memory of Mrs. Barbara Pearlstine Lemel

Marcia Dragonette Alcorn

Margaret Ann Amberik

Ancora Foundation

On behalf of the George & Amalia Hoke

Charitable Gift Fund

Ann Bernsdorf Andrew

Daniel Paul and Nan Ariano

Dalia Armonas

Gail B. Arnoff

Marcie Birnberg Austen

Susan S. and Ronald H. Backer

In memory of Dr. Frances Wolpaw

Susan Marie Barniak

Erin Bartman

Diane Levitt Bell

Phylis W. Benjamin

Britney Bennett

Susan T. Berlin

Joanne Berman

In memory of Dr. Frances Wolpaw

Joan Beutler

Diana Bilimoria

Thanks to Our Donors

Marcia Landau Elbrand
Employees of Ste. 250 A
in Triangle Building
Suzanne Gross Englander
Olivia E. Ennis
Epstein/Zuckerman Family Foundation
On behalf of Natalie Zuckerman Epstein
Helen H. Evans
Katherine N. Evans
Mary H. Evans
Barbara Falkenstein
Elizabeth Faulb
In memory of Dr. Frances Wolpaw
Loretta R. Fay
Margaret J. Fear
Dolores S. Feldman
In memory of Mrs. Miriam Goldman Litt
Judith Haine Ferguson
Fidelity Charitable Gift Fund
In memory of Helen Evans
On behalf of Drs. Tom and Theresa Pretlow
Joan M. Flanigan
Lynne E. Ford
Emily Evans Ford
Charlotte A. Fowler
Linda R. Frank
Genevieve Elizabeth Frank
Rita Hartenbaum Frankel
Carol Blair Frey
Margaret Friedman
Kahleen Brain Fuller
Sarah Edwards Fulton
F. M. Gaertner, Jr. (Mrs.)
Beth Galinsky
Galyan's Trading Company
Laura Lee Garfinkel
Carol Knoble Gerber
Josephine E. Gersdorff
Marilyn M. Gish
Lynn Rothschild Gitlitz
In honor of Patricia B. Kilpatrick
Eleanor Goldstein
Noreen Koppelman Goldstein
Lev Gonick
In memory of Ms. Christine G. Sciulli
Goodwin Video
Jane R. Goosetree
Barbara Gothe
Julia E. Grant
Marguerite Brancae Groseclose
Barbara Jean Haas
Jane Hammond
In memory of Gail Newman
Shirley M. Hanks

Donna Hanley
In memory of Dr. Frances Wolpaw
Katherine E. Hanna
Susan Virginia Hans
Norma Sue Hanson
Margaret Young Harley
Colette Hart
Health South Corporation
Maria Giuffre Helmerich
Nora C. Hennessy
Andrea Angell Herzig
Elizabeth M. Hijar
Jean Pryor Hinson
Audrey L. Hofstetter
In memory of Ruth M. Dauper
Jane H. Hogan
Amalia V. Hoke
Adeline Schirripa Holt
Dorothy J. Honey
Leah Gressel Horwitz
Myrtle Alice Howard
Mary Kay Howard
Jane Huml
Gay Smith Hunter
Sarah Jane Ingraham
Lynnette Jackson
Helen L. Jacobson
In honor of Terri Garfinkel
Helen Lazerick Jacobson
Jason Jaffery
Kay Print Janney
Joyce Brenneman Johnston
Judson Manor/Judson Park
Janice K. Justice
David and Jane Kadish
In memory of Dr. Frances Wolpaw
Faye Kaplan
Betsey C. Kaufman
Margaret M. Kelly
Jane W. Kessler
Nancy K. Klein
Constance Brigneli Koss
Barbara H. Krackhardt
Carol Birchmeier Krause
Virginia Z. Kresina
Mary Krueger
Carol F. Lader
Nancy S. Laitta
Martha R. Landenberger
Sven A. Langmack (Mrs.)
Stanley Lasky
In memory of Elaine Zeligson
Elizabeth B. Lawrence
The Leadership Company

Angela M. Leehan
Merrienne Moss Leff
Barbara Pearlstine Lemel
Ronald Paul Lemmo
Miriam R. Levin
Faith Levitt
Fern Ruth Levy
In honor of Mrs. Iris Fishman
In honor of Mrs. Lois Cowan Katovsky
In memory of Mrs. Sue Sichertman
Joyce Jarc Lewanski
Donella Vidmar Lewis
Valda G. Lewis
Carole Schonberg Litt
Shushano Long
Aleta Grillot Looker
Nancy Goodwin Lord
In honor of Jean La Porte Aldridge
Harriet Louise Lubin
Alta Lucht
Annette G. Lusher
Patricia Q. Lybarger
In memory of Mrs. Mary Schreiner
Kathleen R. MacEwan
James R. Malek
Mary E. Mann
Cheryl Anne Marshall
Mary Rouse Martin
Janet P. Mason
John A. Massie
In honor of Patricia B. Kilpatrick
Elaine M. Mattson
Helen Ryan McDonald
Marlene McElroy
Lola Meek
Ruth G. Mellman
Members of the Laboratory of
Neural Injury & Repair
*On behalf of Members of the Laboratory of
Neural Injury & Repair and Wadsworth
Center in memory of Dr. Frances Wolpaw*
Philip A. Mesi (Mrs.)
Donald E. Metz (Mrs.)
Mary Ann Meyer
Jimmy Elaine Wilkinson Meyer
Maureen Beverly Milicia
June Stearns Miller
Dorothy Taylor Mitchell
Barbara K. Mittelman
Judith Tillman Moore
Lana Moresky
Amy Main Morgenstern
In memory of Dr. Frances Wolpaw

Thanks to Our Donors

Hadley S. Morgenstern-Clarren
In memory of Dr. Frances Wolpaw

Ryan Paul Mosier

Florence B. Moss

Betty Harris Murphy

Barbara M. Myers

Wendy Lynn Myers

Irene B. Naegele

Barbara H. Nahra

Rose Nardi

In honor of Patricia B. Kilpatrick

Edris T. New

G. Regina Nixon

Iris Flaxman Hollander November

Jennifer Nye

Joanne Ritondaro O'Malley

Margaret M. O'Neil

Jean C. Opatrny

In memory of Jeanne La Porte Aldridge

Jacqualin Meyer Oster

P. Carla Pace

Esther Klein Palevsky

Edith M. Paller

Sophia G. Pallone

Socrates Papadopoulos (Mrs.)

Catherine E. Patterson

Elizabeth Patton

Jill M. Paulsen

Martha Payne

Irene K. Pekoc

Geraldine Ilcin Penxa

Jeanne M. Peterson

Grace J. Petot

Gene B. Phillips

Gail Polivy

Theresa P. Pretlow

Carroll W. Pursell

Marsha Pyle

Leatrice Bergida Rabinsky

Louise Morrison Raffa

Molly Rickert

Margaret Robinson

Patricia A. Rodgers

Flora Cassese Romonto

Mary Ann F. Rothstein

Margaret Roudebush

Merle M. Rubin

Rowena Duchan Rubin

Mrs. Saul Rubin

Jocelyn C. Ruf

Marjorie Louise Rugland

Susan Mack Runkle

Judith Hample Russo

Virginia S. Ruth

Shirley S. Ryan

Noha Nasr Ryder

Evie Kahn Safran

W. Eugene Sage

Betsy K. Sampliner

In honor of Caryn Foltz

Charlotte B. Sattler

Genevieve Sauve

Ruth Savchuk

Alexandra Syler Schnackel

Lois H. Schoch

Jean Schroeder

Diane Schwartz

Renee Rogoff Schwartz

Ruth A. Seligman

Jes Sellers-Thomson

Amanda T. Shaffer

Brenda M. Shank

Felicia W. Shapiro

John F. Shelley

Mary Lou Sheplavy

Diane M. Shoemaker

Rachel Harriet Siegfried

Margaret M. Simms

Gary J. Simson

Jennie Skerl

Carol M. Skirball

Billie Feddery Smith

Kathleen Flynn Smith

Michael C. Smith

Sally Perry Smith

Margaret L. Snyder

Linda Biendl Sommer

Joyce Spetrino

Joan Goodman Spetter

Mary Jean Spodnik

St. Vincent/St. Luke's Medical Staff

In memory of Dr. Frances Wolpaw

Margaret Stager

Charlotte A. Stampfel

Myron Bud Stern

Rae Sherrer Strasshofer

Winifred S. Stutz

Ann Burkat Sugerman

Ann Gaither Sullivan

Lelia Mouser Sunday

Mildred S. Sweeney

Elaine P. Swiler

In memory of Mrs. Marianne Dale Moon

James G. Taaffe (Dr. & Mrs.)

Frances P. Taft

In honor of Patricia B. Kilpatrick

Cyrus C. Taylor

Deborah Tenenbaum

In memory of Susan Lewis

Kenneth R. Thompson

Emrie Thoresen

Aloen Townsend

Nancy Kadow Treadway

In honor of Lucille A. Bentley FSM '26

Helen Marie Trutko

Mrs. Samuel H. Tucker

Nancy Udelson

Robert M. and Gloria L. Ulmer

Eugenia Poporad Vanek

Leslie Nevin Veirs

Christina E. Vellios

Carol Jean Vellucci

Claire Booher Velzy

Daniel and Mitzie Verne

Marianne T. Vesprani

Visibility Marketing, Inc.

Jean Ann M. Vosmik

In memory of Victoria Kloss Ball

Gerald and Phyllis H. Wachs

Audrey A. Wagner

Anne M. Wagner

Susan Grey Wagner

In honor of Dalia Nasvytis Armonas, FSM '71

In memory of Stephanie Tubbs Jones

Joan Carlson Walson

Carolyn Crane Walker

Ann G. Ware

Russell J. Warren

In honor of Patricia B. Kilpatrick

Robin Weaver

Lillian Epstein Weisberg

Lisa S. Weitzman

Marcia Z. Wile

Elaine Kish Wilson

Melissa D. Wilson

Ann Elizabeth Woerner

Virginia Kline Wolff

Women's Council Cleveland Museum of Art

In honor of Margaret Carney

Elizabeth B. Womer

Maggy Woodcock

Angela M. Wollacott

Leeanne Musser Wright

Leslie Anne Yerkes

Dorothy M. Zanetti

Joyce S. Zaslov

In memory of Mrs. Marjorie S. Mellon

Zinner & Co. LLP

In memory of Frances Wolpaw

Zonta Club of Cleveland Foundation

Support The Flora Stone Mather Center For Women



Donors at \$1000 or above will receive a Flora Stone Mather Alumnae Association pure silver MATHER ARCH PIN designed and created by local artist Marsha Brayton Everett.

These pins were exclusively reserved for FSMAA alumnae.

Every day we encounter students, new and continuing, women and men, who need our services and benefit from our programs. In the past six months we have expanded our scope of sexual conduct education and assault prevention, launched evening hours in the Center for Women, and have begun several new student groups. Our work in the wider community is ongoing. We need your help in building our capacity and maintaining the quality of our accomplishments.

There are several ways to help, including attending our events and becoming involved with our Community Advisory Board. You may also make a donation, either by filling out the following form and sending it to us or using the enclosed self-addressed envelope. Thanks in advance for helping to enhance the education of young women.

Shannon Lundeen, PhD, Director

Gifts to the Flora Stone Mather Center for Women are tax-deductible.

Name _____

____ Friend ____ Graduate Class(s) _____

School(s) _____

Home Phone _____ Email _____

Address _____

City _____ State _____ Zip _____

I am pleased to support the Center with my gift of \$ _____

____ Check enclosed, payable to Case Western Reserve University

____ I have enclosed my employer's matching gift form

____ I would like to fulfill my gift as a pledge, to be paid over ____ years (up to five)

____ Please bill my credit card: ____MasterCard ____Visa ____AMEX ____Discover

Name as it appears on the card _____

Account Number _____ Exp. Date _____

____ I wish to fulfill my gift with stocks.

____ My gift is in ____ memory or ____ honor of _____

____ Check here if you wish your gift to remain anonymous

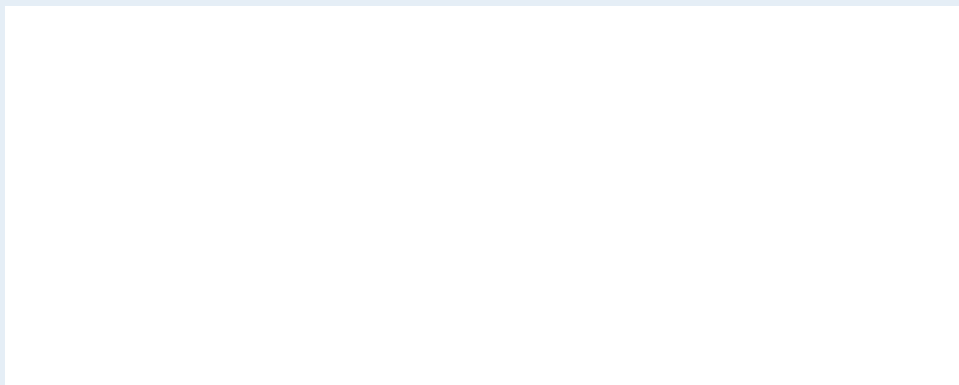
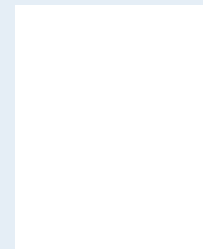
____ Please send me information about giving through my estate plan

For additional information contact Shannon Lundeen
Phone: 216.368.0985
Email: centerforwomen@case.edu

Please mail donations to:
Flora Stone Mather Center for Women
Case Western Reserve University
10900 Euclid Avenue
Cleveland, OH 44106-7175

CWRU employees may also choose payroll deduction.

Case Western Reserve University
Flora Stone Mather Center For Women
10900 Euclid Avenue
Cleveland, OH 44106-7175



Honoring Flora Stone Mather

Born Flora Amelia Stone in Cleveland in 1852 to wealthy parents, Flora Stone Mather was a philanthropist with religious, educational, and humanitarian interests. She founded the Legal Aid Society and Goodrich House, a social service settlement house, now Goodrich-Gannett Neighborhood Center.

Flora was particularly generous to the Women's College of Western Reserve University, which was renamed Mather College in her honor in 1931. Mrs. Mather provided funds for Guilford House, Hayden Hall, and Amasa Stone Chapel. When she died in 1909, her will contained bequests to more than 30 charities.



 **CASE WESTERN RESERVE**
UNIVERSITY EST. 1826
FLORA STONE MATHER CENTER FOR WOMEN

309 Thwing Student Center
10900 Euclid Avenue
Cleveland, OH 44106-7175

Phone: 216-368-0985

Fax: 216-368-0977

centerforwomen@case.edu

www.case.edu/provost/centerforwomen/

<http://www.facebook.com/FSMCFW>

<http://twitter.com/#!/FSMCENTER4WOMEN>

facebook
twitter

